



Brierley Road, SW12

£4,000 Per calendar month

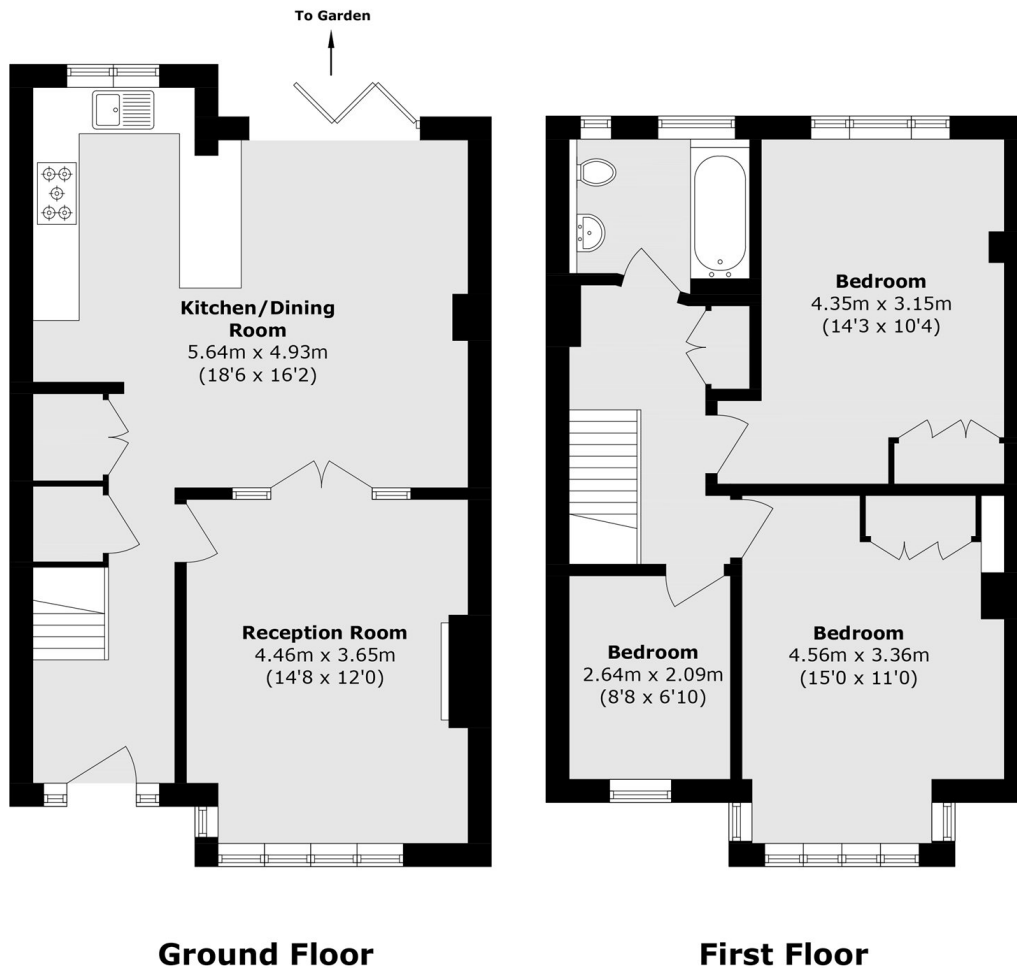
This exceptional three bedroom terraced house in Balham has been finished to a high specification and offers a stylish, comfortable living environment with an open entertaining space ideal for modern living, complete with a south west facing garden.

A residential road offering convenient access to Balham overground and underground stations, with a wide range of local amenities nearby, as well as the open spaces of Tooting Bec Common just moments away.

Features

- Three Bedrooms
- Spacious Reception Room
- Modern Kitchen
- Modern Bathroom
- Wooden Flooring
- South West Facing Garden

Brierley Road, London, SW12



Total area (approx.): 99.7 sq. m (1073.1 sq. ft)