

Glenlyn



W
WHITES

Glenlyn, High Street, Fovant, SP3 5JL

A characterful semi-detached stone cottage in a popular Nadder Valley village, featuring generously proportioned rooms, a double-glazed conservatory, and a courtyard garden. Available for 12 months.

- Character semi-detached cottage
- Three bedrooms
- Two bathrooms
- Large sun room
- Open plan kitchen-dining
- Working log burner
- Popular location
- Oil central heating
- Off-street parking
- 12 Month let

£1,400 PCM





About The Property

This property is a charming semi-detached stone cottage situated in a central position within a popular village in the Nadder Valley. The current owner has sympathetically updated and extended the house, ensuring that all the rooms are generously sized and full of character.

At the rear of the cottage, Fovant Brook enhances its appeal. The accommodation features an oak entrance porch that leads into a spacious kitchen/dining room equipped with integrated appliances and attractive African Rosewood work surfaces. A highlight of the cottage is the cedar-clad, double-glazed conservatory, which includes a low-profile sunseeker door.

There is also a side storage area with a utility space and a cloakroom/WC. The ground floor is completed by a sitting room that boasts a large Inglenook fireplace with an inset wood burner.

On the first floor, you'll find three bedrooms, including a master bedroom with an en-suite shower room, as well as a family bathroom. At the front of the property, there is a driveway that provides off-road parking for two cars, and the rear features a cozy courtyard garden. Heating is supplied by oil and underfloor heating.

Fovant is a picturesque village situated on the southern slopes of the Nadder Valley, within the Cranborne Chase National Landscape. Surrounded by meadows, chalk downs, and ancient woodlands, it provides a tranquil rural setting along with a well-connected and active community.

The village is equipped with everyday amenities, including a shop and a Post Office, a GP surgery, a pharmacy, and a garage. The busy village hall hosts regular events and activities, while local news is shared through a monthly magazine and website. Fovant also benefits from a regular bus service and community-run transport. The surrounding countryside is excellent for walking, and the larger towns of Wilton and Tisbury, which has a mainline railway station, are easily accessible. The property is available for a 12-month let.



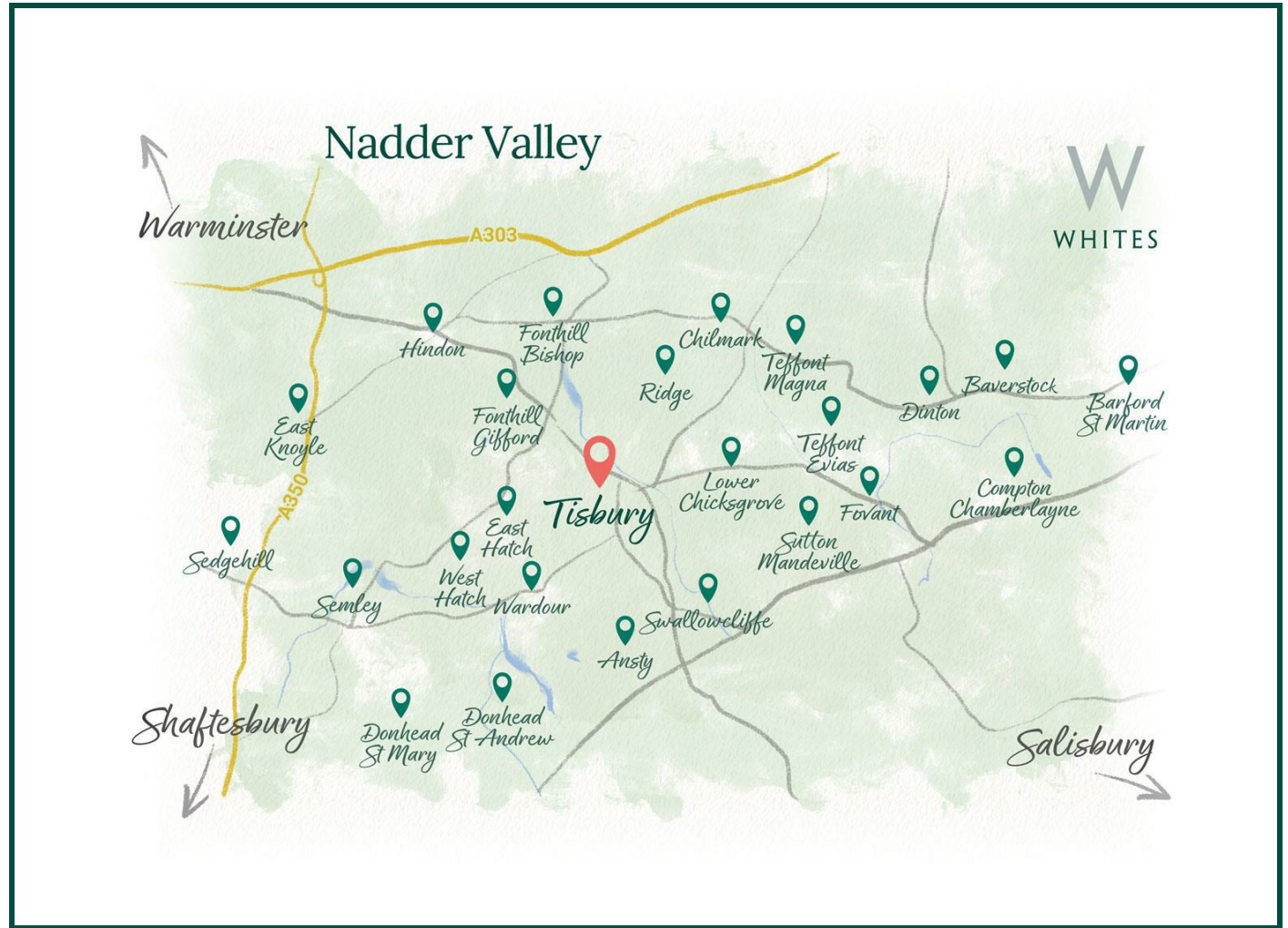


Location

Fovant is a characterful village set on the southern slopes of the Nadder Valley, within the Cranborne Chase National Landscape. Surrounded by meadows, chalk downs and ancient woodland, it offers a peaceful rural setting with a well-connected and active community.

The village is well served with everyday amenities including a shop and Post Office, GP surgery, pharmacy, and garage. A busy village hall hosts regular events and activities, and local news is shared through a monthly magazine and website. Fovant also benefits from a regular bus service and community-run transport.

Fovant is best known for its striking hillside Regimental Badges, carved into the chalk by soldiers during the First World War—a lasting and poignant piece of local heritage that continues to define its unique place in the landscape.



Salisbury: 15 mins
Bath Spa: 1 hr 36 min
London Waterloo: 1 hr 50 mins



Salisbury: 25 mins
Bath: 1 hr 36 mins
London: 1 hr 50 mins



Local public house: 3 mins
Local amenities: 1 mins

Key Information

Local Authority:

Wiltshire Council

Council Tax:

Band: D - £XXXXX (2025/2026)

Property Type:

Cottage - Semi Detached

Floor Area:



1373.10 sq ft

Let Available Date:

14th August 2026 NB: This date is provisional and will only be confirmed once referencing has been successfully completed.

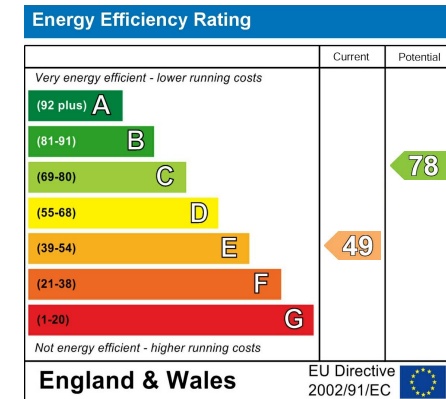
Furnish Type:

Unfurnished

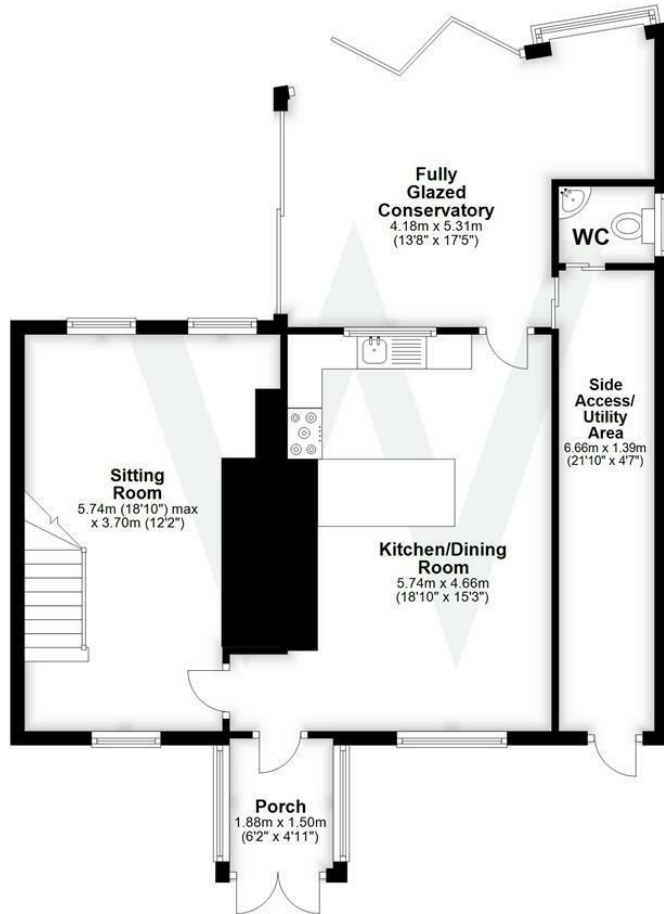
Deposit:

£1,615

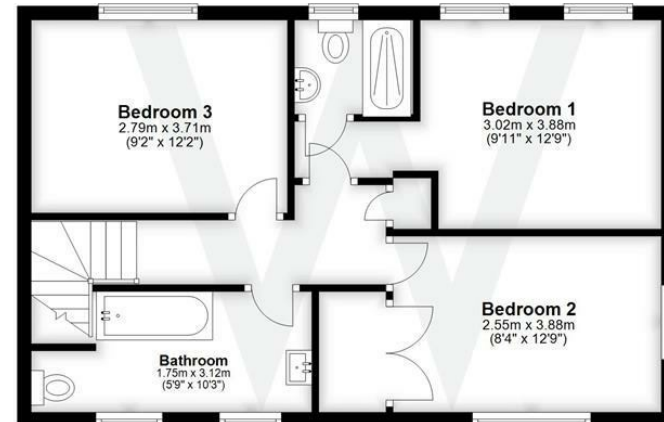
EPC:



Ground Floor
Approx. 72.8 sq. metres (783.3 sq. feet)



First Floor
Approx. 51.7 sq. metres (556.0 sq. feet)



Total area: approx. 124.4 sq. metres (1339.3 sq. feet)