

SIMPLY GREEN

16 Windsor Close
Newton Abbot -



Beautifully presented and finished to a high standard throughout, this exceptional four-bedroom detached family home occupies a prime position within a highly sought-after location, offering spacious and thoughtfully designed accommodation ideal for modern family living.

An open and airy entrance hallway creates a welcoming first impression and provides access to a convenient ground-floor WC.

At the heart of the home lies a stunning dual-aspect kitchen/diner, contemporary in style and fitted with a comprehensive range of integrated appliances. This impressive space is perfectly suited to both everyday family life and entertaining, enhanced by an abundance of natural light. The dual-aspect lounge is equally inviting, featuring a charming fireplace and patio doors that open directly onto the garden, creating a wonderful connection between indoor and outdoor living.

Upstairs, the generous master bedroom provides a peaceful retreat, complete with a stylish en-suite with a separate shower cubicle. Three further well-proportioned bedrooms offer flexibility for growing families, guest accommodation, or home working. A modern family bathroom completes the first floor, featuring both a bath and a separate shower cubicle for added convenience.

Externally, the property continues to impress. A double garage with electric doors offers secure parking and additional storage, while the rear garden has been thoughtfully landscaped to create a versatile outdoor space. A patio area—ideal for al fresco dining—leads onto an astro-turfed play area, perfect for children, with steps rising to a tiered garden that provides further areas for relaxation and enjoyment.

Services

Mains Electricity, Mains Gas
Mains Water, Mains Drainage

Tenure - Freehold

Local Authority - Teignbridge District Council

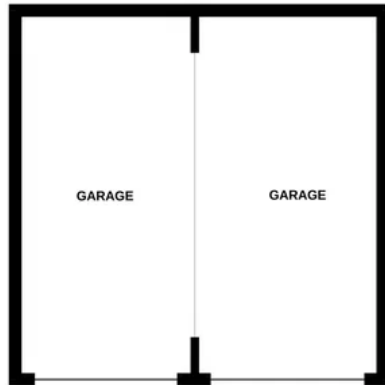
Council Tax Band - D

Viewings - To view this property, please call us and we will arrange a time that suits you.

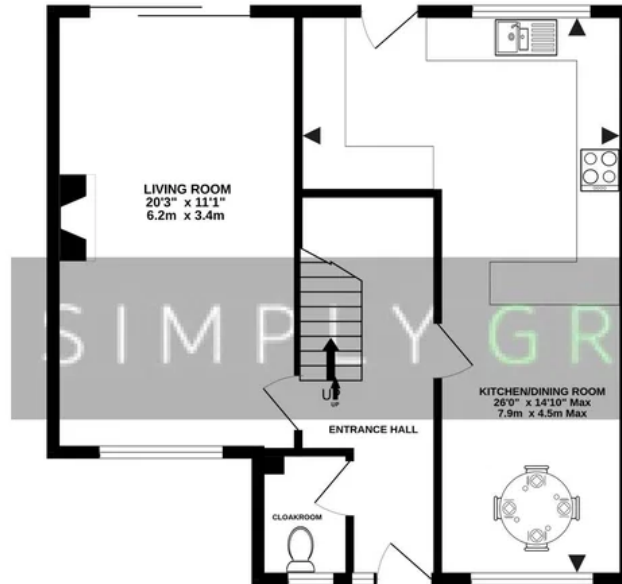




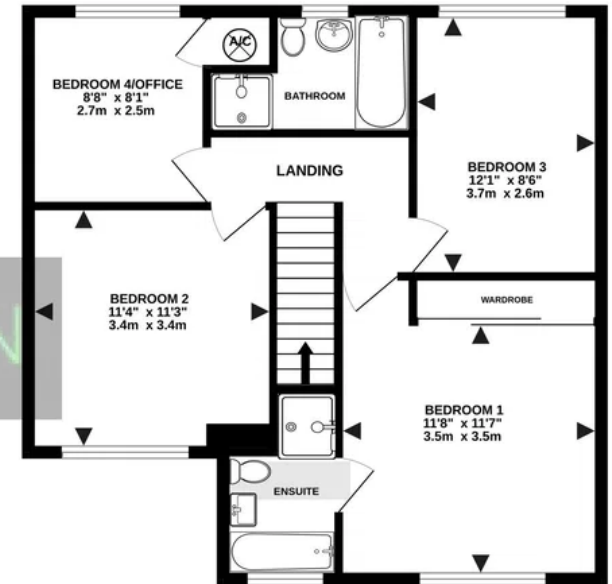
BASEMENT



GROUND FLOOR



1ST FLOOR



Whilst every attempt has been made to ensure the accuracy of the floorplan contained here, measurements of doors, windows, rooms and any other items are approximate and no responsibility is taken for any error, omission or mis-statement. This plan is for illustrative purposes only and should be used as such by any prospective purchaser. The services, systems and appliances shown have not been tested and no guarantee as to their operability or efficiency can be given.
Made with Metropix ©2026