



Connells

Brunswick Road
Cannock



Ground Floor

Entrance Hall

Having a UPVC double glazed front entrance door into hall, door to living room, door to kitchen, stairs leading to first floor, radiator, ceiling light point.

Living Room

Having carpeted flooring, gas fire place with surround, ceiling light point, radiator, double glazed bay window to the front aspect.

Kitchen / Diner

Having fitted wall, base and drawer units with laminate worktops over, space and plumbing for appliances, sink with drainer, tiled flooring, radiator, ceiling light points, double glazed windows to the side and rear aspects, door to the rear garden.



First Floor

Landing

Having carpeted flooring, ceiling light point, doors to bedrooms and shower room, doors to storage cupboard, loft hatch access.

Bedroom 1

Having carpeted flooring, ceiling light point, radiator, double glazed window to the front aspect.

Bedroom 2

Having carpeted flooring, ceiling light point, radiator, double glazed window to the rear aspect, built in storage cupboards.

Bedroom 3

Having carpeted flooring, ceiling light point, radiator, double glazed window to the rear aspect.

Shower Room

Having a W.C, hand wash basin, shower cubicle with folding shower screen, fully tiled walls, carpeted flooring, double glazed window to the front aspect.

Outside

Front

Having a front garden with laid to lawn and pathway leading to the front entrance door and gated access to the rear garden

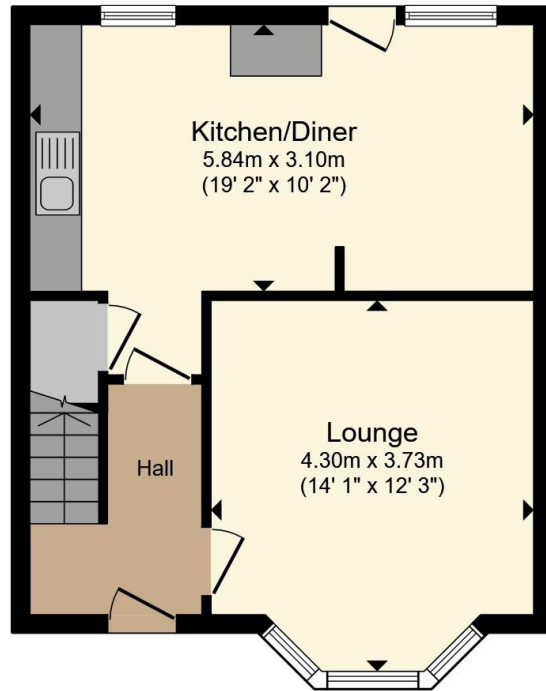
Rear

Having paved patio areas, laid to lawn, paved pathway to rear garden sheds and a variety of shrubs and floral displays

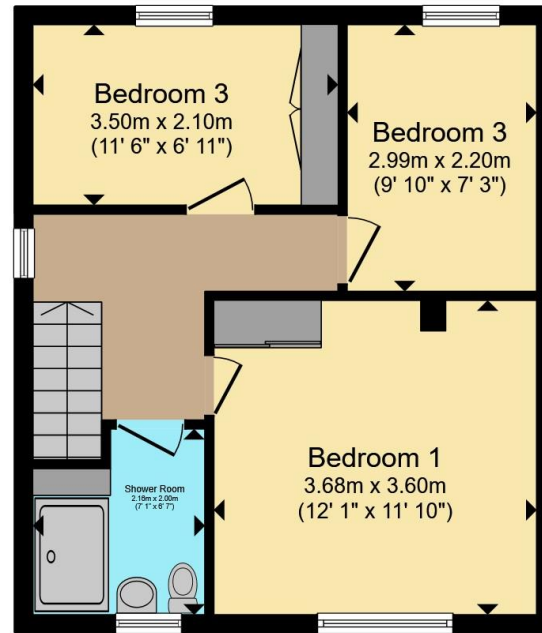








Ground Floor



First Floor

Total floor area 81.2 m² (875 sq.ft.) approx

This floor plan is for illustrative purposes only. It is not drawn to scale. Any measurements, floor areas (including any total floor area), openings and orientation are approximate. No details are guaranteed, they cannot be relied upon for any purpose and they do not form part of any agreement. No liability is taken for any error, omission or misstatement. A party must rely upon its own inspection(s). Powered by www.propertybox.io



To view this property please contact Connells on

T 01543 500923
E cannock@connells.co.uk

10-12 Wolverhampton Road
 CANNOCK WS11 1AH

EPC Rating: C Council Tax
 Band: B

Tenure: Freehold

view this property online connells.co.uk/Property/CNK108918



1. MONEY LAUNDERING REGULATIONS Intending purchasers will be asked to produce identification documentation at a later stage and we would ask for your co-operation in order that there will be no delay in agreeing the sale. 2. These particulars do not constitute part or all of an offer or contract. 3. The measurements indicated are supplied for guidance only and as such must be considered incorrect. Potential buyers are advised to recheck measurements before committing to any expense. 4. We have not tested any apparatus, equipment, fixtures, fittings or services and it is in the buyers interest to check the working condition of any appliances.

Connells Residential is registered in England and Wales under company number 1489613, Registered Office is Cumbria House, 16-20 Hockliffe Street, Leighton Buzzard, Bedfordshire, LU7 1GN. VAT Registration Number is 500 2481 05.

See all our properties at www.connells.co.uk | www.rightmove.co.uk | www.zoopla.co.uk

Property Ref: CNK108918 - 0003