



# The Ashford

3 bedroom semi-detached home

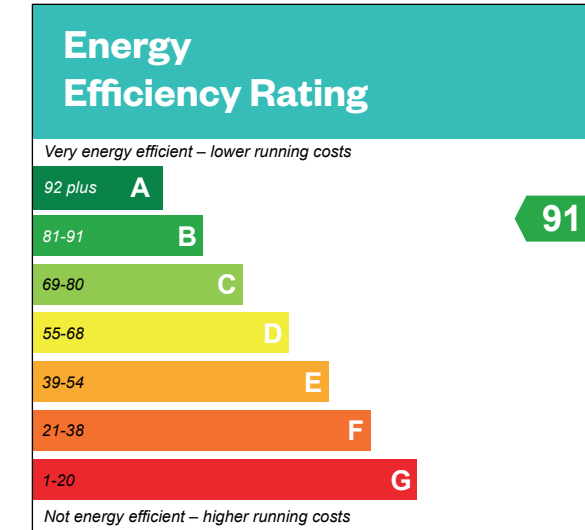


# The Ashford

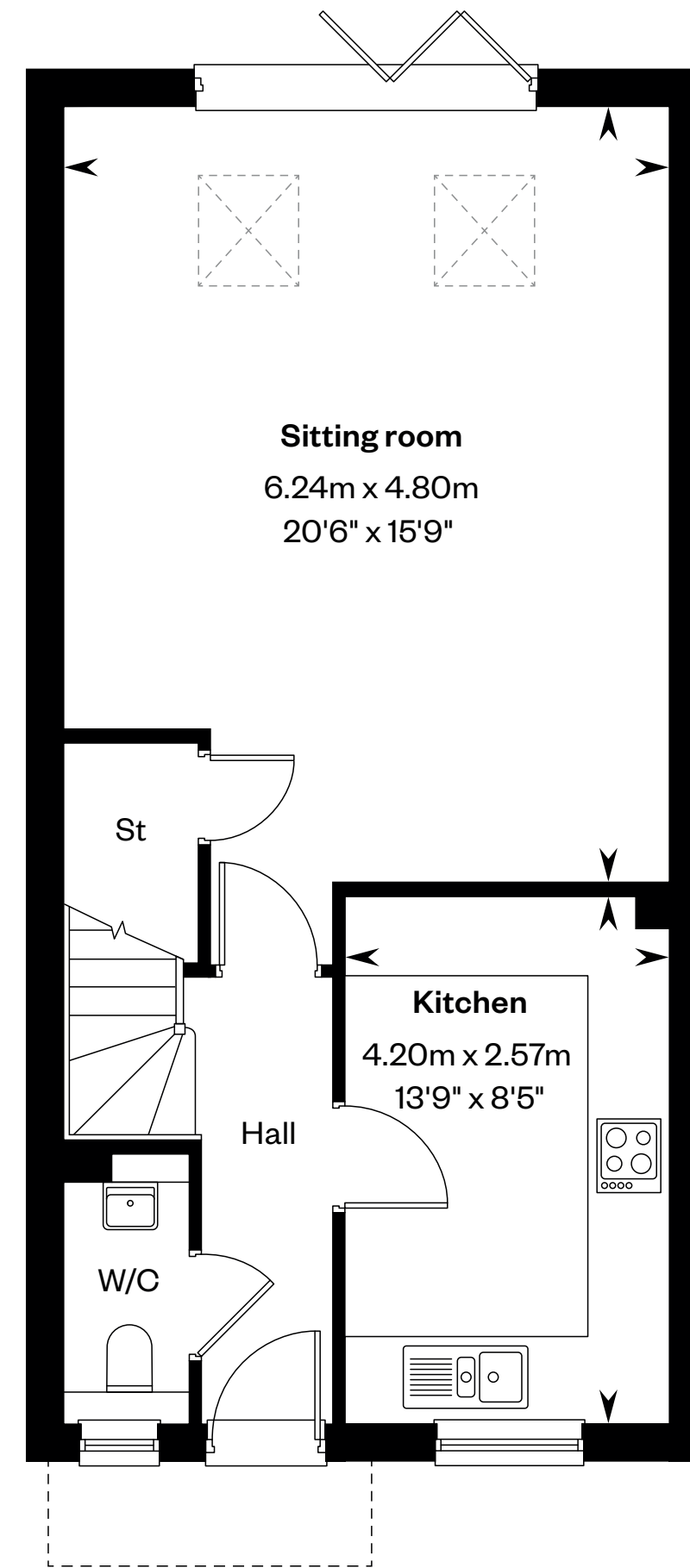
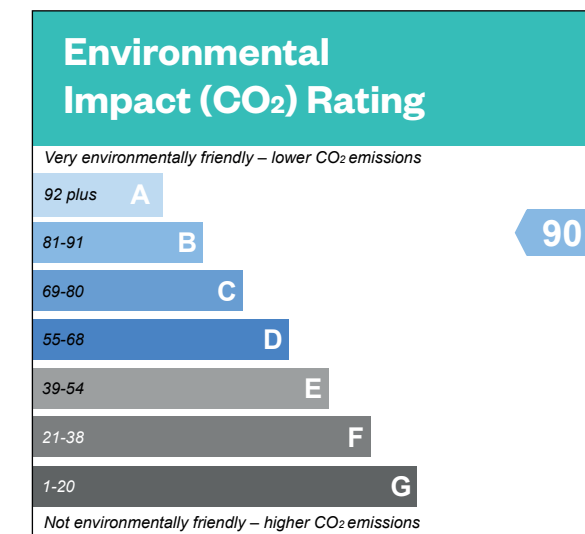
## 3 bedroom semi-detached home

Plots 498, 504, 506, 530 & 532 – as shown

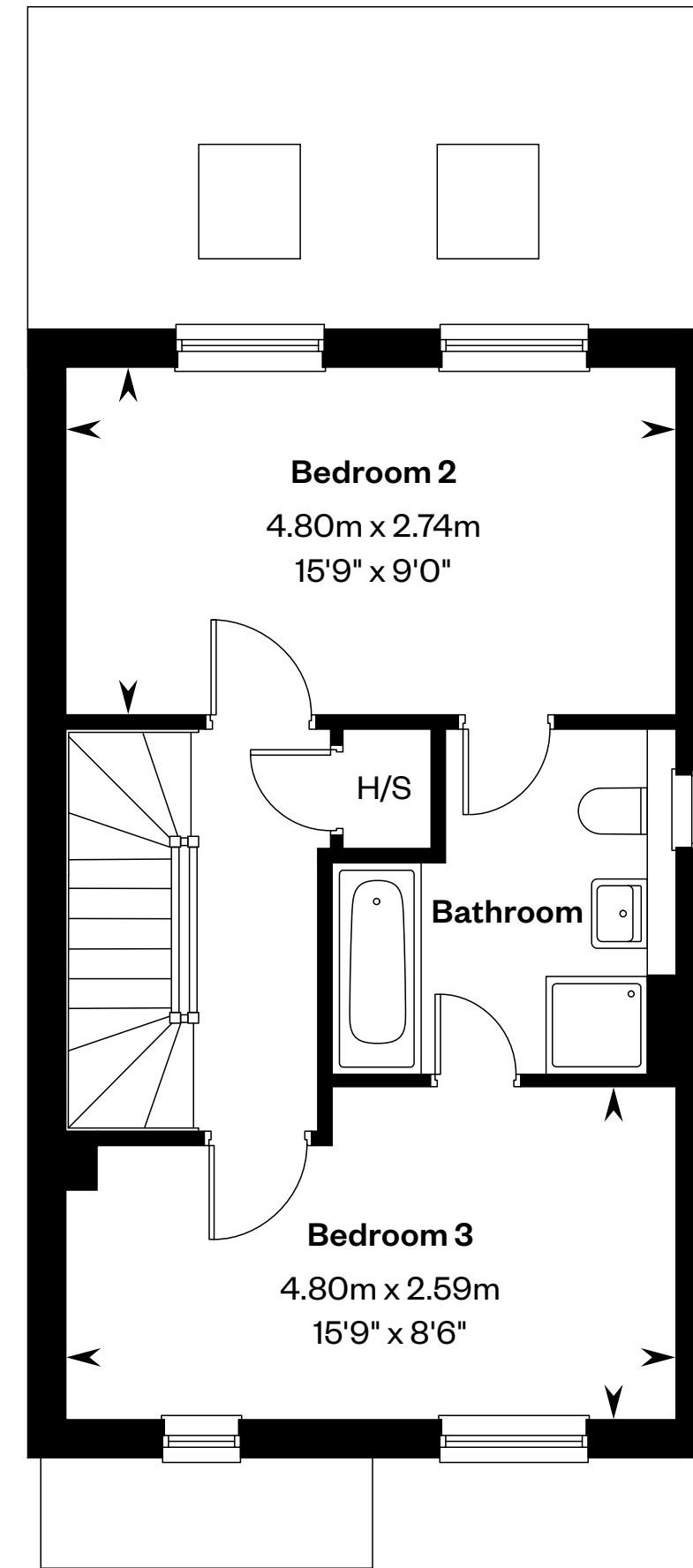
Plots 499, 505, 507, 529 & 531 – handed



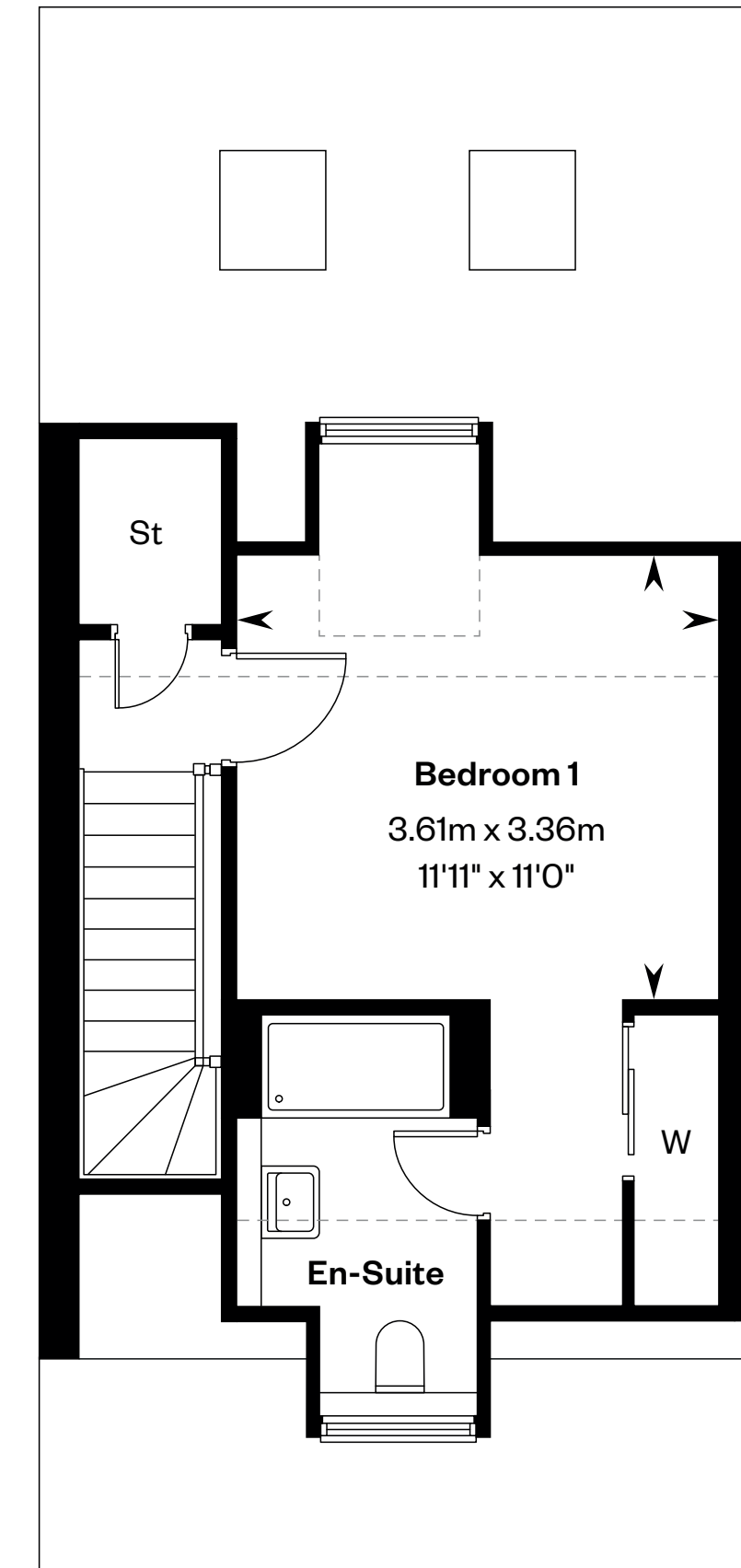
This is a Predicted Energy Assessment for properties that are incomplete. Once the property is completed, this rating will be updated and an official Energy Performance Certificate will be created for the property.



Ground floor



First floor



Second floor

H/S: Heating source cupboard. St: Store cupboard. W: Wardrobe. ☒: Roof light/velux window. ----: Dotted lines denote reduced head height.

**IMPORTANT NOTICE TO CUSTOMERS:** The Consumer Protection from Unfair Trading Regulations 2008. Cala Homes (Chiltern) Limited operates a policy of continual product development and the specifications outlined in this brochure are indicative only. The computer generated images and photographs do not necessarily represent the actual finishings/elevation or treatments, landscaping, furnishings and fittings at this development. Information contained is accurate at date of publication on 08.04.25. See the main brochure for the full Consumer Protection statement.