



Parkside  
Knightsbridge, SW1X

CHESTERTONS





Elegant lateral apartment of circa 2246 square feet comprising part of a stunning Victorian mansion development overlooking Hyde Park. The property has been recently renovated and is ideal for both entertaining and family living.

Features include wood flooring throughout, air-conditioning, private balcony overlooking Hyde Park and 24-hour onsite portorage. The accommodation comprises two large receptions, entrance hallway, four double bedrooms, three bathrooms, eat-in kitchen and utility room.

- Air Conditioning
- Wooden Floors
- 24 hour Porter
- Overlooking Hyde park
- Lateral Apartment
- Approx 2,246 sq ft

**£14,733 pcm**

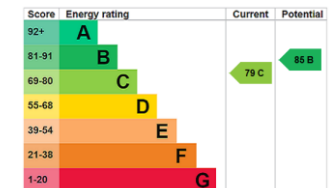
Additional tenant charges apply (fees apply to non-AST tenancies only)

Tenancy Agreement Fee: £300

References per Tenant/Guarantor: £60

Inventory check (approx. £100 – £250 inc. VAT)

[chestertons.co.uk/property-to-rent/applicable-fees](http://chestertons.co.uk/property-to-rent/applicable-fees)



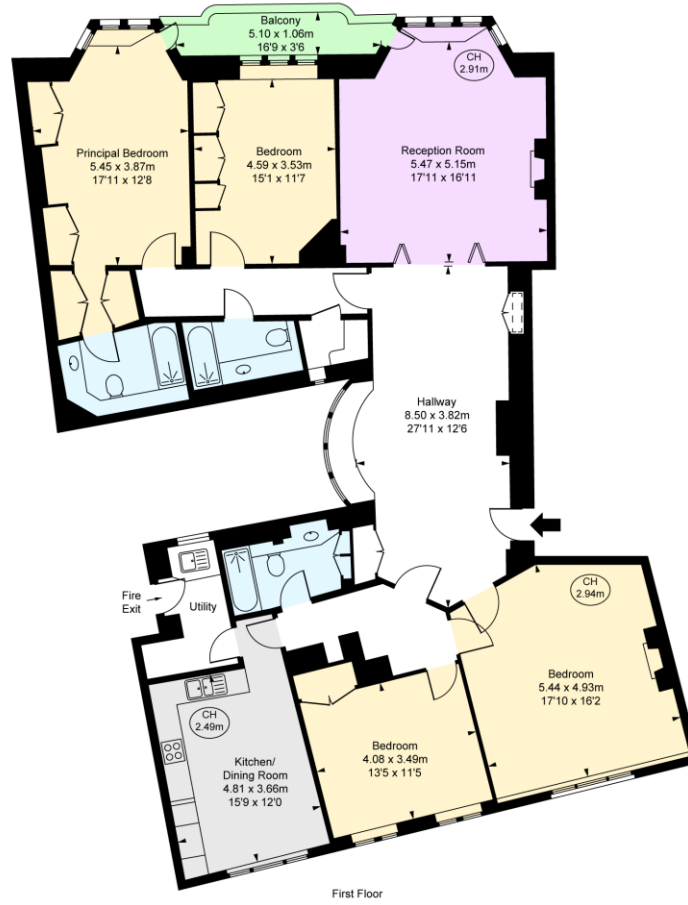
**Minimum Term:** 12 months  
**Deposit Required:** 6 weeks  
**Local Authority:** City of Westminster  
**Council Tax Band:** H  
**EPC Rating:** C  
**Furnished**

*Chestertons Knightsbridge & Belgravia Lettings*

31 Lowndes Street  
 London  
 SW1X 9HX

[knightsbridgelettingsusers@chestertons.co.uk](mailto:knightsbridgelettingsusers@chestertons.co.uk)  
 02072353530  
[chestertons.co.uk](http://chestertons.co.uk)

Parkside,  
Knightsbridge, SW1X  
Approximate Gross Internal Area  
197.68 sq m / 2,128 sq ft  
(Including restricted height  
under 1.5m [ = = = ] )  
(CH = Ceiling Heights)



First Floor

This plan is not to scale. It is for guidance and not for valuation purposes.  
All measurements and areas are approximate only, and have been prepared in accordance with the current edition of theRICS Code of Measuring Practice  
for Valuers.

Chesterton UK Services Limited trading as Chestertons for themselves and for the vendor of this property whose agents they are, give notice that (i) these particulars do not constitute any part of an offer or contract, (ii) all statements contained within these particulars are made without responsibility on the part of Chestertons or the vendor, (iii) whilst made in good faith, none of the statements contained within these particulars are to be relied upon as a statement or representation of fact, (iv) any intending purchasers must satisfy themselves by inspection or otherwise as to the correctness of each of the statements contained within these particulars, (v) the vendor does not make or give either Chestertons or any person in their employment any authority to make or give representation or warranty whatsoever in relation to this property. Wide angle lenses may be used. ©Copyright Chestertons | Chesterton Global Ltd | Registered Office 5th Floor, The Lantern, 75 Hampstead Road, London, NW1 2PL Registered Company Number 05334580.



This paper is  
100% recyclable