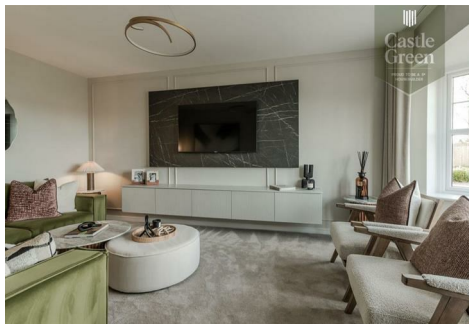


chris hamriding

lettings & estate agents



19 Granary Lane, Congleton, CW12 1TU

£449,995

****Show Homes Now Open****

Welcome to Woodland Manor, a beautiful new housing development by Castle Green Homes nestled alongside the picturesque River Dane in Congleton, Cheshire. Offering a stunning selection of 3 and 4 bedroom homes, Woodland Manor combines modern living with the tranquil charm of waterside living. The development is designed to provide a welcoming community atmosphere, featuring unique yet stylish homes that blend seamlessly into the natural landscape. With its exceptional location and thoughtfully designed properties, Woodland Manor is the perfect place to call home.

The 'Wentworth' is a family-friendly home that features a spacious open-plan kitchen diner, with French doors, seamlessly bringing an indoor-outdoor connection to the home. The separate lounge, illuminated by a beautiful bay window, offers a serene space for relaxation and quiet moments. Practical amenities like a utility room, cloakroom, and single integrated garage are found on the ground floor, adding convenience to daily life. Upstairs, the primary bedroom boasts an en-suite bathroom for added privacy. Additionally, three more double bedrooms, all complemented by a family bathroom offer larger families the ideal home comforts.

Entrance Hall

Garage

Lounge

Dining Kitchen

Utility

Cloaks W/C

Bedroom 1

En-suite

Bedroom 2

Bedroom 3

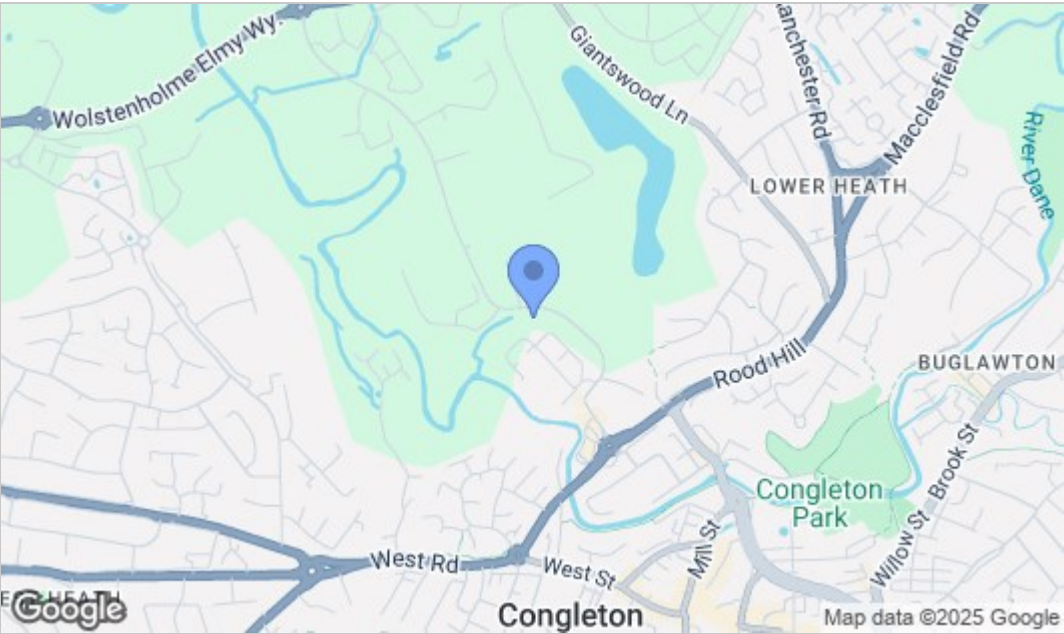
Bedroom 4

Bathroom

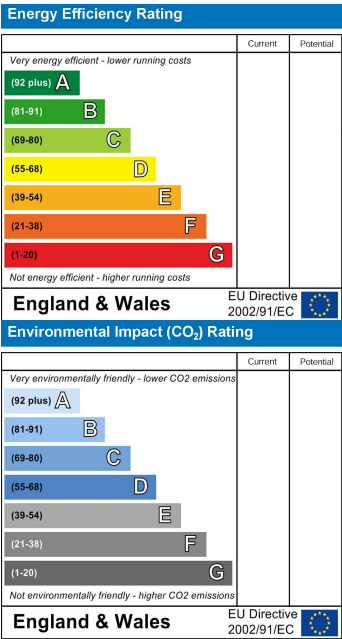
Floor Plan



Area Map



Energy Efficiency Graph



NOTICE Chris Hamriding Lettings & Estate Agents for themselves and for the vendor or lessors of this property whose agents they are given notice that: (i) the particulars are set out as a general outline only for the guidance of intending purchasers or lessees, and do not constitute, nor constitute part of, an offer of contract, (ii), all descriptions, dimensions, references to condition and necessary permissions for use and occupation, and other details are given in good faith and are believed to be correct but any intending purchasers or tenants should not rely on them as statement or representation of fact but must satisfy themselves by inspection or otherwise as to the correctness of each of them, (iii) no person in the employment of Chris Hamriding Lettings & Estate Agents has any authority to make or give any representation or warranty whatever in relation to this property.