



15 The Terrace Longshore, London  
London

£400,000

OLIVER *OJ* JAQUES  
EST. 1986

# 15 The Terrace Longshore

London

Set just off the river bank in a peaceful spot, The Terrace is a rare Georgian gem hidden amongst the backdrop of post-dock Deptford. Believed to dat...

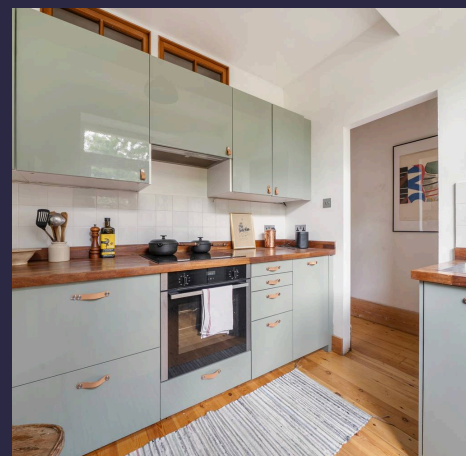
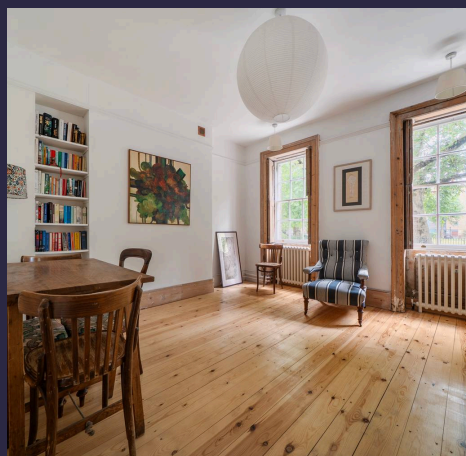
Council Tax band: TBD

Tenure: Leasehold

EPC Energy Efficiency Rating: D

EPC Environmental Impact Rating: E

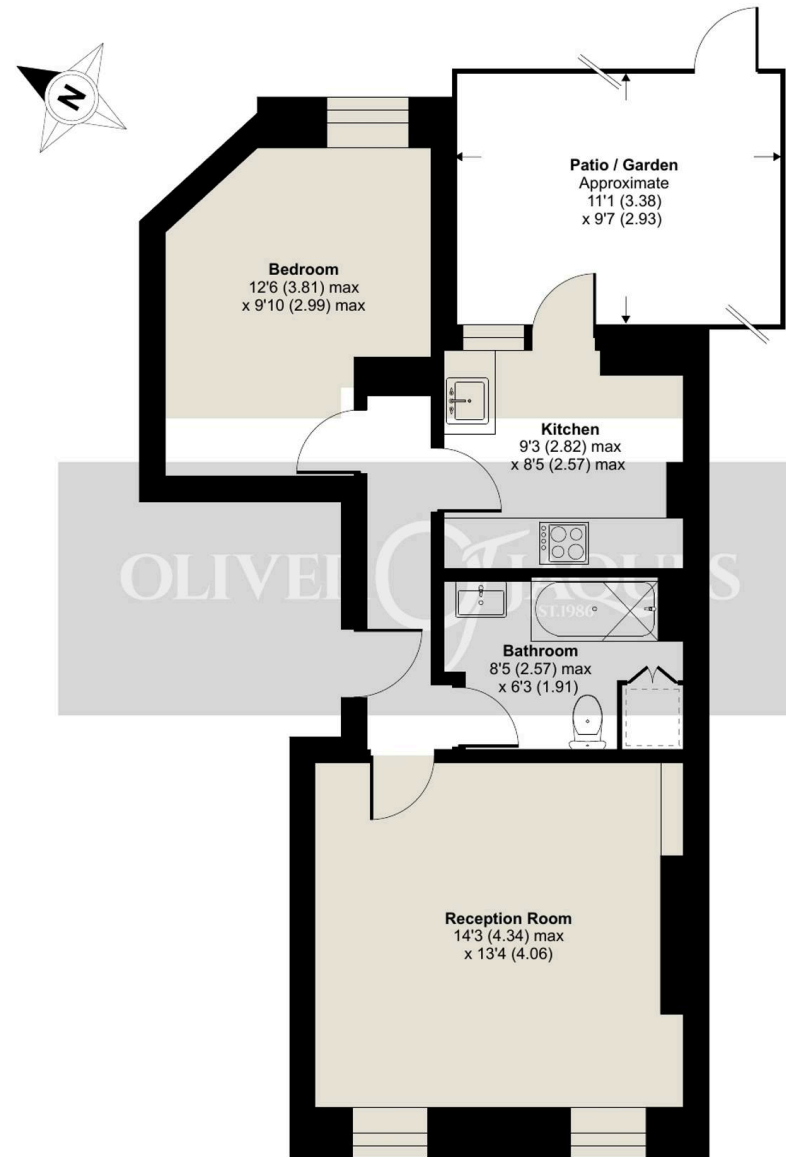
- Georgian Townhouse conversion
- Private garden
- Chain free
- 170+ lease
- Heating and hot water included in service charge
- High ceilings
- 0.6m to Greenland Docks
- 0.9m to Surrey Quays station (Windrush line)
- 1.0m to Canada Water station (Windrush line / Jubilee line)



# The Terrace, Longshore, London, SE8

Approximate Area = 506 sq ft / 47 sq m

For identification only - Not to scale



**GROUND FLOOR**





## Oliver Jaques

Oliver Jaques, 229-231 Lower Road - SE16 2LW

02072315050 • southeast@o-j.co.uk • o-j.co.uk/

Every care has been taken with the preparation of this brochure but it is for general guidance and complete accuracy can't be guaranteed. Prospective purchasers should seek clarification from their solicitor. The mention of any appliances fixtures or fittings does not imply they are in working order.