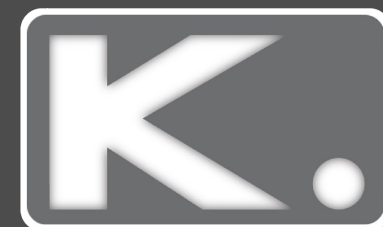




**6 Bed
House - Terraced
located in Brighton**

£3,640 PCM



106 Islingword Road
Brighton
East Sussex
BN2 9SG

Kendrick Property Services are delighted to bring to the market a spacious 6 bedroom house in Brighton, ideal for students. The property is in a great central location on Islingword Road, in the popular Hanover area. The property is within easy walking distance to the beach, nearby shops and vibrant nightlife. The property consists of a open plan lounge and kitchen, 6 double bedrooms, 2 bathrooms and patio garden. Part Furnished (beds, desks, wardrobes, sofas).
£130pppw (Bills Included G,E,W option available) Ava -
29/08/2023



6



2



1

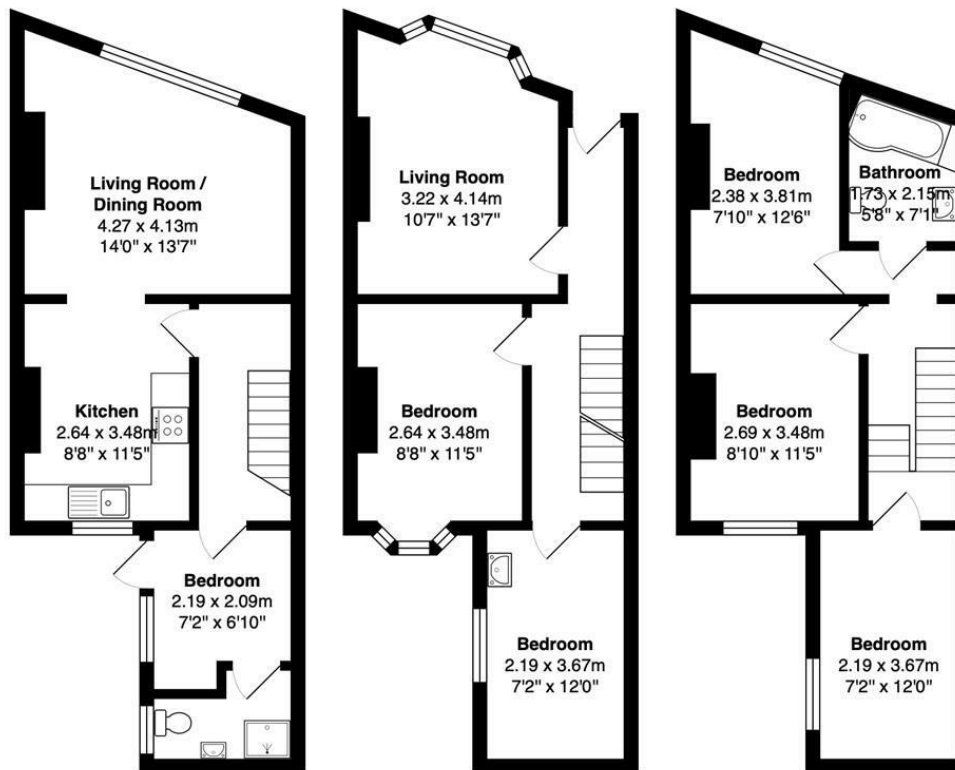


C





106 Islingword Road, Brighton, East Sussex, BN2 9SG



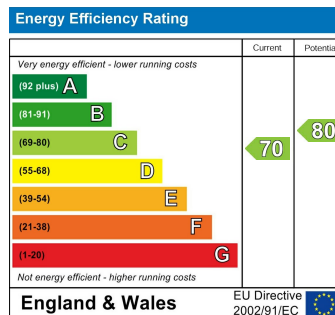
Lower Ground Floor
 Area: 38.7 m² ... 417 ft²

Ground Floor
 Area: 39.4 m² ... 424 ft²

First Floor
 Area: 38.7 m² ... 416 ft²

Total Area: 116.8 m² ... 1257 ft²

All measurements are approximate and for display purposes only.



DIRECTIONS

CONTACT

Kendrick Property Services - Brighton
 10-12 Lewes Road
 Brighton
 East Sussex
 BN2 3HP
 E:
lettings@kendrickpropertyservices.co.uk
 T: 01273 699600
www.kendrickpropertyservices.co.uk

