

**Churchills**



## **Hampden Road** , Mexborough S64 9JN

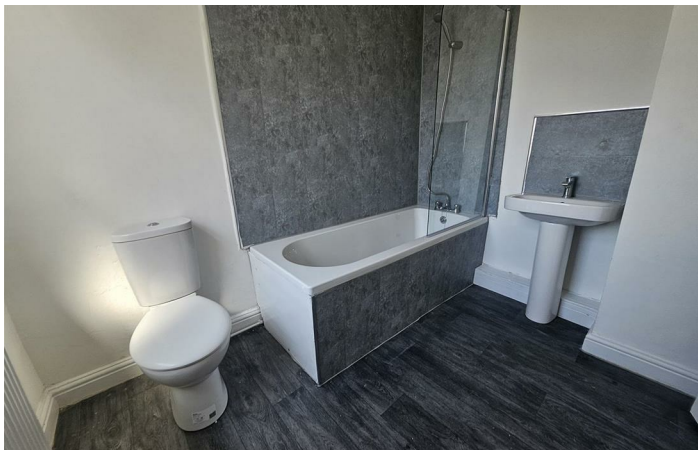
- MID TERRACE PROPERTY
- TWO RECEPTION ROOMS
- COMBI BOILER HEATING
- CLOSE TO LOCAL AMENITIES
- TWO DOUBLE BEDROOMS
- MODERN KITCHEN & BATHROOM
- CLOSE TO TRANSPORT LINKS
- EPC RATING E

**£625 PCM**





Location





**Local Authority Doncaster**  
**Council Tax Band A**  
**EPC Rating E**

**Churchills Lettings Office**

16 High Street, Mexborough, South  
Yorkshire, S64 9AS

**Contact**

01709 582880  
[Info@churchillsestateagents.com](mailto:Info@churchillsestateagents.com)  
[www.churchillsestateagents.com](http://www.churchillsestateagents.com)

Agents Note: Whilst every care has been taken to prepare these particulars, they are for guidance purposes only. All measurements are approximate and for general guidance purposes only and whilst every care has been taken to ensure accuracy, they should not be relied upon and potential buyers/tenants are advised to recheck the measurements.