

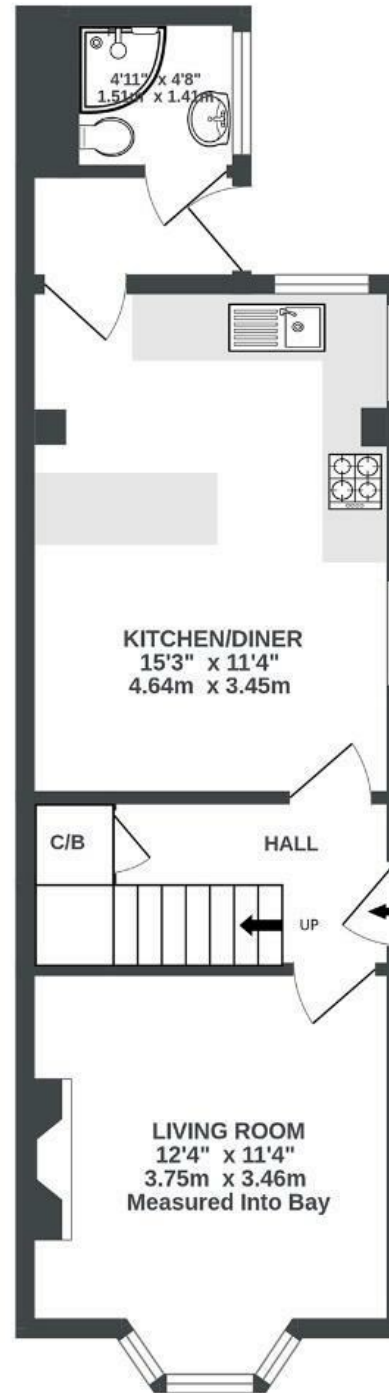
Summer Hill

TOTTERDOWN

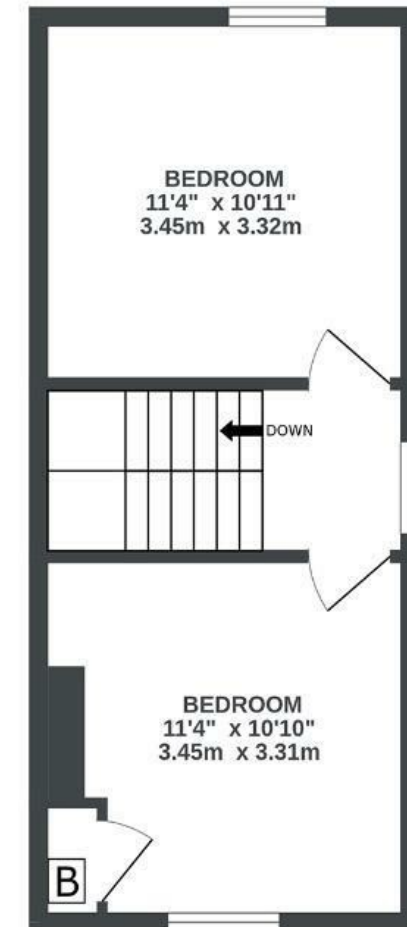
APPROXIMATE FLOOR AREA
64.8 SQM / 698 SQFT



GROUND FLOOR
397 sq.ft. (36.9 sq.m.) approx.



1ST FLOOR
300 sq.ft. (27.9 sq.m.) approx.



Illustrations are for reference purposes only, measurements are approximate, not to scale.

Boardwalk

Summer Hill

, BRISTOL



£360,000



2 Bedrooms



BS4 3BE



1 Bathrooms

"I bought this house in 2002, having lived in Bristol since 1999. Totterdown was an "up and coming" area at that time, but it has developed into a really charming and bohemian area of Bristol, which I love. My neighbours are super friendly and everyone is always willing to help each other out, we've had some great gatherings on the street, and I have friends for life here. The house has been perfect for me over the years within easy reach of the city centre for work/pleasure, highly recommend!"

