



www.jeffreygross.co.uk

CARDIFF

VALE

CAERPHILLY

BRISTOL



Turnbridge News



Comments by Ms Olivia Melville-Brown



Property Specialist

Ms Olivia Melville-Brown

Branch manager

o.melvillebrown@thepropertyoutlet.com

Comments by the Homeowner



Turnbridge Mews

, Bristol, BS10 6FF

PCM

£1,500 PCM



3 Bedroom(s)



1 Bathroom(s)



796.54 sq ft



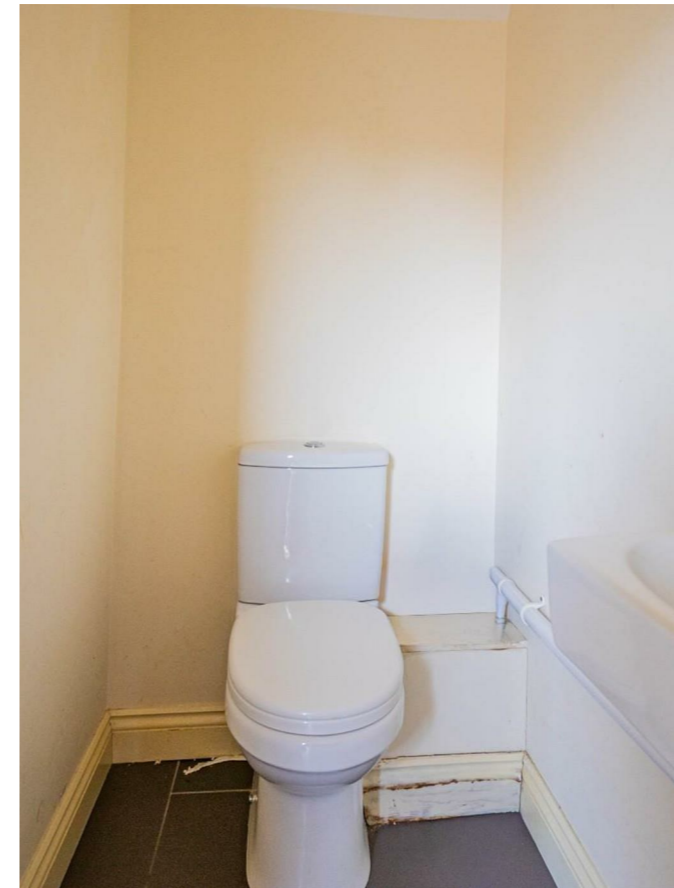
Contact our
Property Outlet Branch

0117 935 4565

* AVAILABLE 05.06.2026 *

MODERN THREE BEDROOM HOUSE WITH PARKING! The Property Outlet & Jeffrey Ross are delighted to off this end of terrace house which comprises entrance hall, cloakroom, kitchen/dining room, living room. To the first floor, there are two double bedrooms and a spacious bath/shower room & w/c. On the second floor there is further double bedroom. Outside there are side & rear gardens, along with off road parking. WHITE GOODS INCLUDE, gas hob/electric oven, washing machine, dishwasher & fridge/freezer. The property also benefits from double glazing and gas central heating & off-road parking. This house would ideally suit sharers or a family.

Holding Deposit £346.15





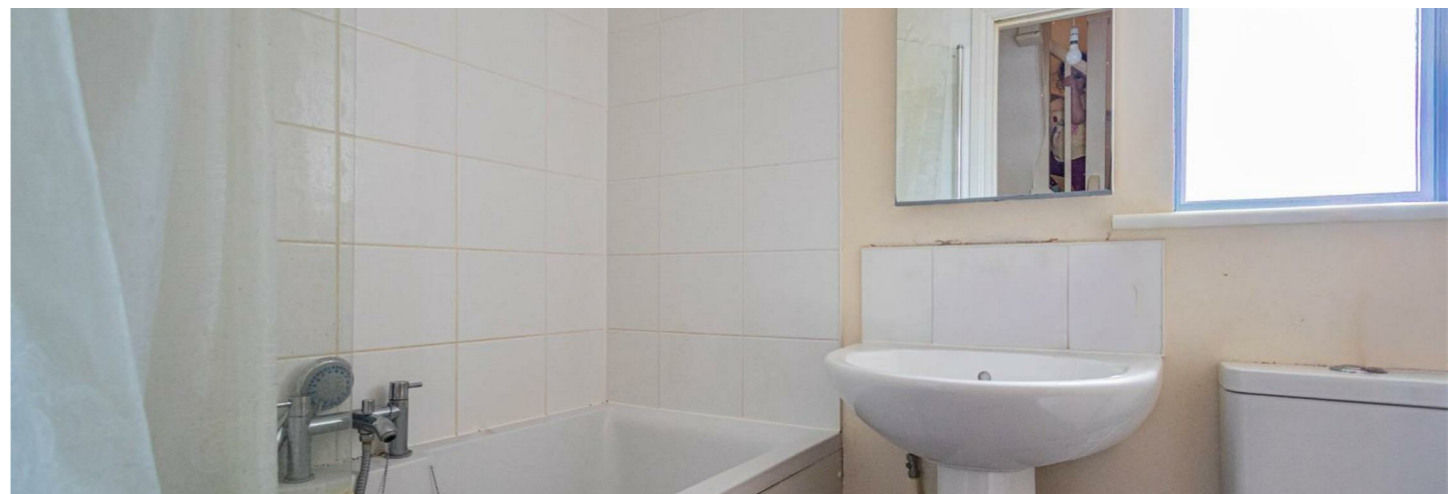
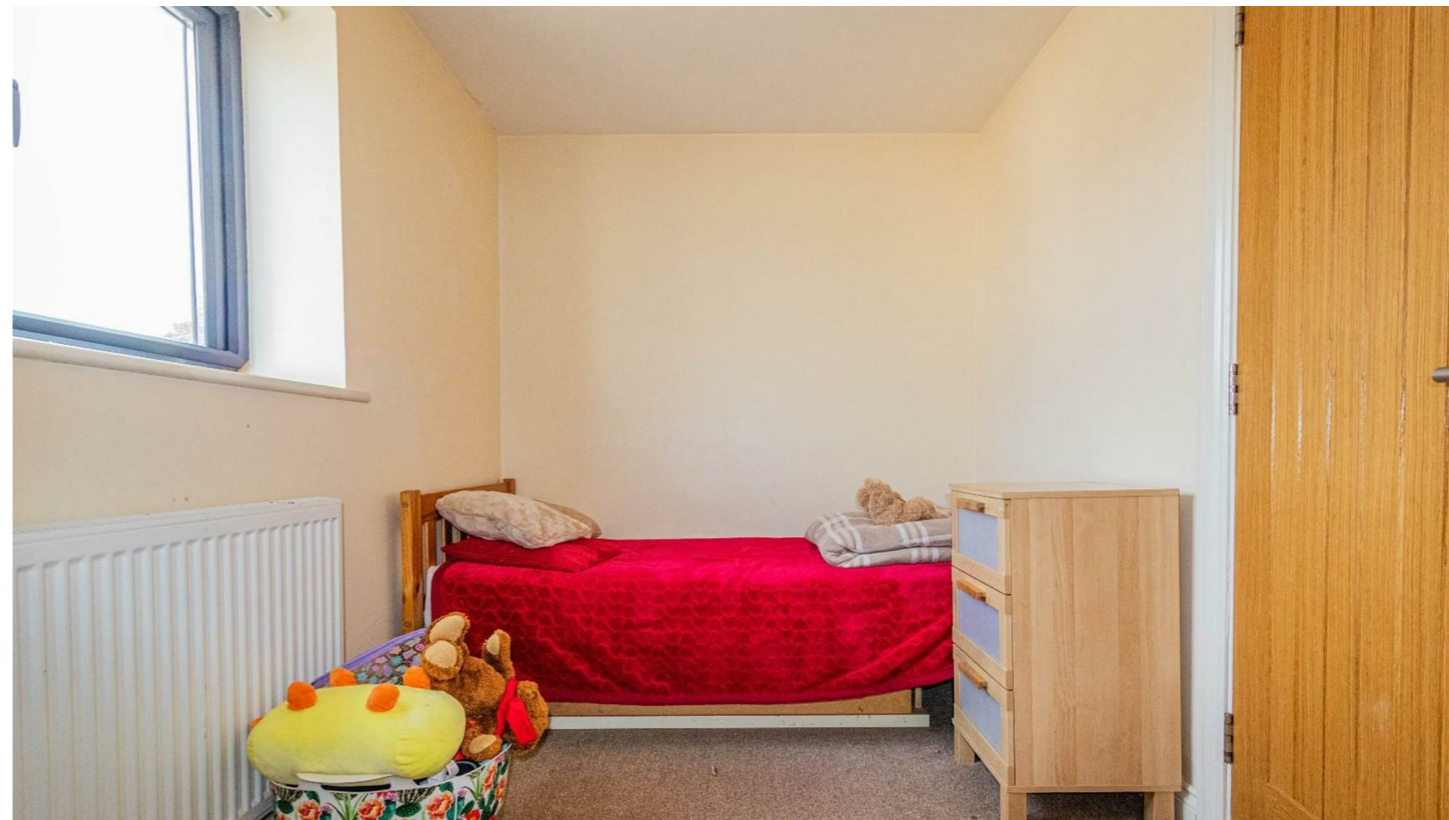
CARDIFF

VALE

CAERPHILLY

BRISTOL

www.jeffreygross.co.uk





Energy Efficiency Rating		Current	Potential
Very energy efficient - lower running costs			
(92 plus) A		88	
(81-91) B			
(69-80) C			
(55-68) D			
(39-54) E			
(21-38) F			
(1-20) G			
Not energy efficient - higher running costs			
England & Wales		EU Directive 2002/91/EC 