



Braeside Avenue, SW19

£595,000

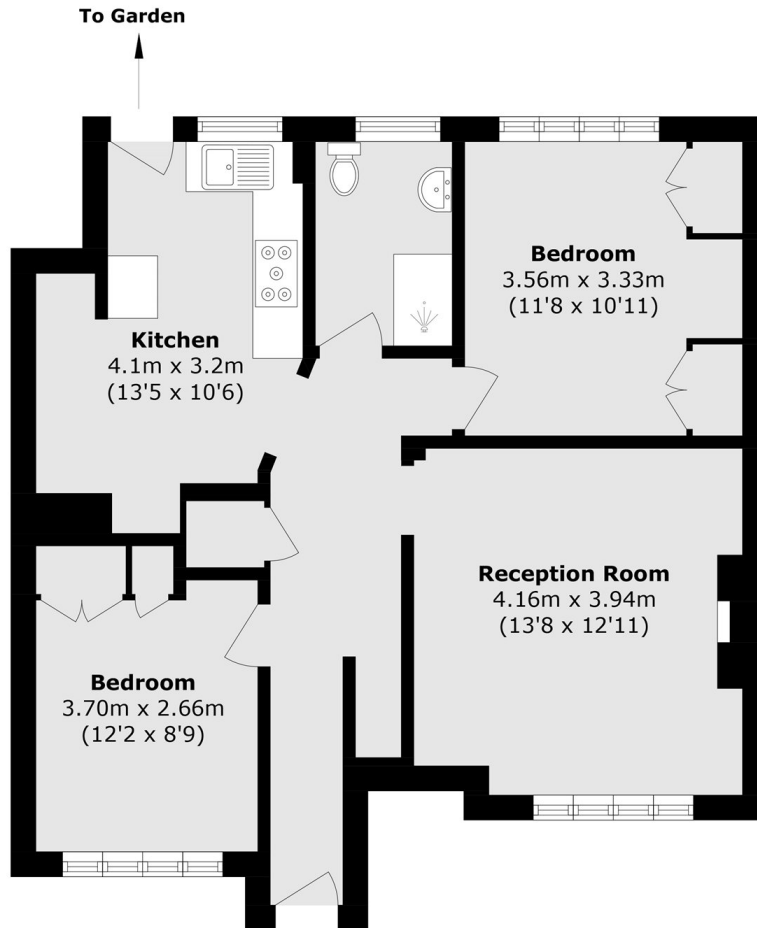
Arguably the best finish of any maisonette within Braeside Avenue, the front garden is full of roses and cherry blossom, the rear garden is landscaped. There are two double bedrooms, air conditioning and no onward chain.

Located in a fantastic cul-de-sac just off of Merton Hall Road this property is near to a selection of good and outstanding schools as well as the green open spaces of Dundonald Park.

Features

- Two Double Bedrooms
- Air Conditioning
- Front And Back Garden
- Exquisite Finish
- Share Of Freehold
- No Onward Chain

Braeside Avenue,
London, SW19



Total area (approx.): 67.4 sq. m (725.5 sq. ft)