



Not for marketing purposes INTERNAL USE ONLY

Buckby Drive
Burton Latimer Kettering



Property Description

Set within the highly sought-after area of Burton Latimer, this attractive three-storey semi-detached home offers versatile and well-proportioned accommodation, ideal for modern family living. With three to four bedrooms, a driveway, garage, and rear garden, the property combines practicality with contemporary style.

Upon entering, the hallway leads through to an impressive open-plan kitchen, dining, and family room, forming the heart of the home. This spacious and light-filled area provides the perfect setting for both everyday living and entertaining. A convenient ground floor W.C. completes the layout on this level.

To the first floor, the property offers a generous principal bedroom with the added benefit of an en-suite shower room, alongside a versatile additional room which can be used as a lounge or fourth bedroom, ideal for guests, a home office, or growing families.

The second floor hosts two further bedrooms, including a particularly spacious double, as well as a family bathroom serving this level.

Externally, the property benefits from a private and enclosed rear garden, perfect for relaxing or entertaining outdoors. To the front, a driveway provides off-road parking and leads to a garage, offering further storage or secure parking options.

Ground Floor

Entrance Hall

External door to the front, stairs to the first

floor.

Kitchen/Dining/Family Room

Windows to the front and side, French patio doors to the rear, a range of wall and base units with rolled edge work surfaces, sink drainer with mixer tap, integrated oven and hob with cooker hood, space for appliances, laminate flooring, radiator.

Cloakroom

Window to the front, wash hand basin, low level WC.

First Floor

Lounge / Bedroom Four

Windows to the front, carpet flooring, radiators.

Bedroom One

Window to the rear, laminate flooring, radiator.

Ensuite

Walk in shower cubicle, wash hand basin, low level WC, tiled splash back, extractor fan.

Second Floor

Bedroom Two

Window to the front, built in cupboard, laminate flooring, radiator.

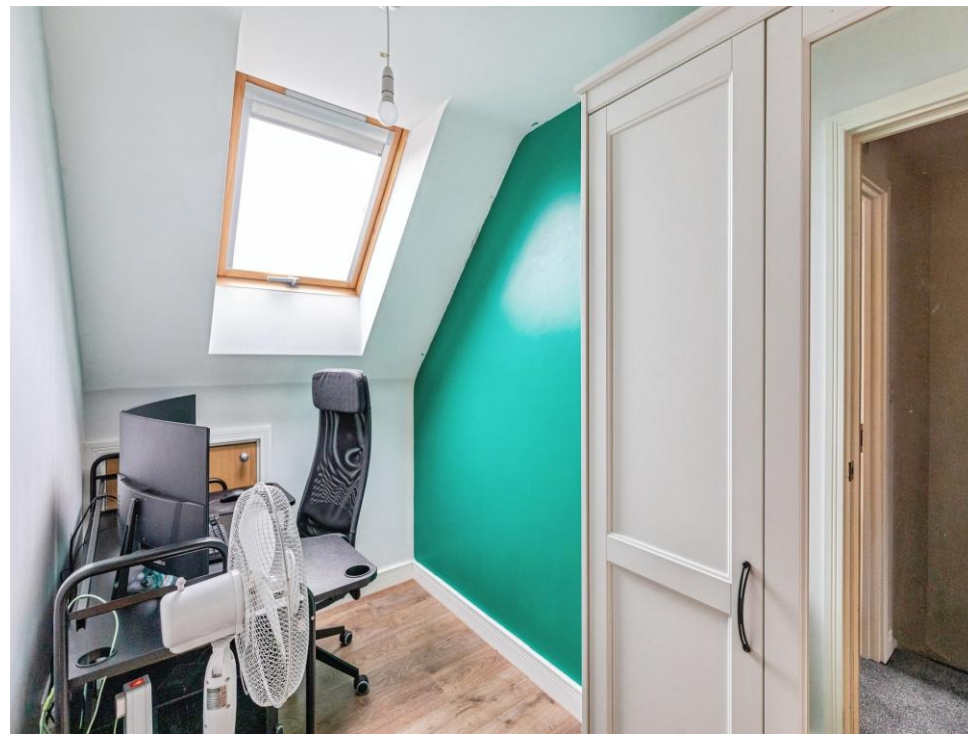
Bedroom Three

Window to the rear, laminate flooring, radiator.

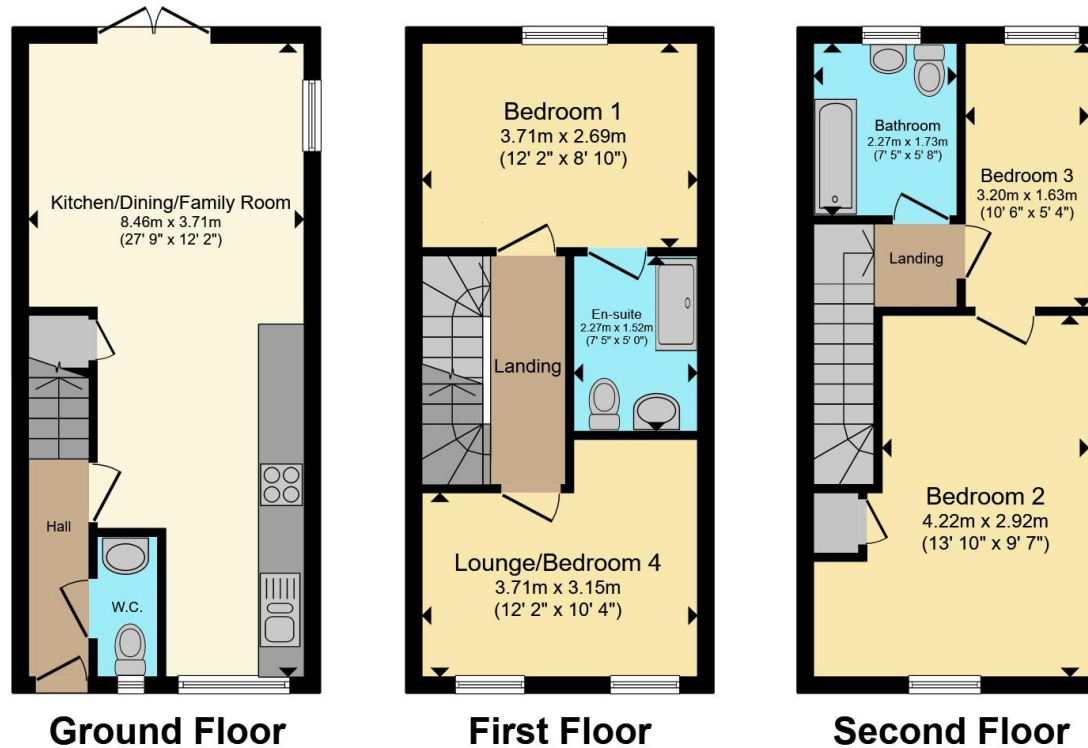
Bathroom

Window to the rear, bath, wash hand basin, low level WC, tiled splash backs, radiator.









Total floor area 90.4 m² (973 sq.ft.) approx

This floor plan is for illustrative purposes only. It is not drawn to scale. Any measurements, floor areas (including any total floor area), openings and orientation are approximate. No details are guaranteed, they cannot be relied upon for any purpose and they do not form part of any agreement. No liability is taken for any error, omission or misstatement. A party must rely upon its own inspection(s). Powered by www.propertybox.io



To view this property please contact Connells on

T 01536 411 811
E kettering@connells.co.uk

5 Montagu Street
 KETTERING NN16 8XG

EPC Rating: B Council Tax
 Band: C

Tenure: Freehold

check out more properties at connells.co.uk



1. MONEY LAUNDERING REGULATIONS Intending purchasers will be asked to produce identification documentation at a later stage and we would ask for your co-operation in order that there will be no delay in agreeing the sale. 2. These particulars do not constitute part or all of an offer or contract. 3. The measurements indicated are supplied for guidance only and as such must be considered incorrect. Potential buyers are advised to recheck measurements before committing to any expense. 4. We have not tested any apparatus, equipment, fixtures, fittings or services and it is in the buyers interest to check the working condition of any appliances.

Connells Residential is registered in England and Wales under company number 1489613, Registered Office is Cumbria House, 16-20 Hockliffe Street, Leighton Buzzard, Bedfordshire, LU7 1GN. VAT Registration Number is 500 2481 05.

See all our properties at www.connells.co.uk | www.rightmove.co.uk | www.zoopla.co.uk

Property Ref: KTT308793 - 0002