



14 Taverners Road, Leicester
£280,000



14 Taverners Road

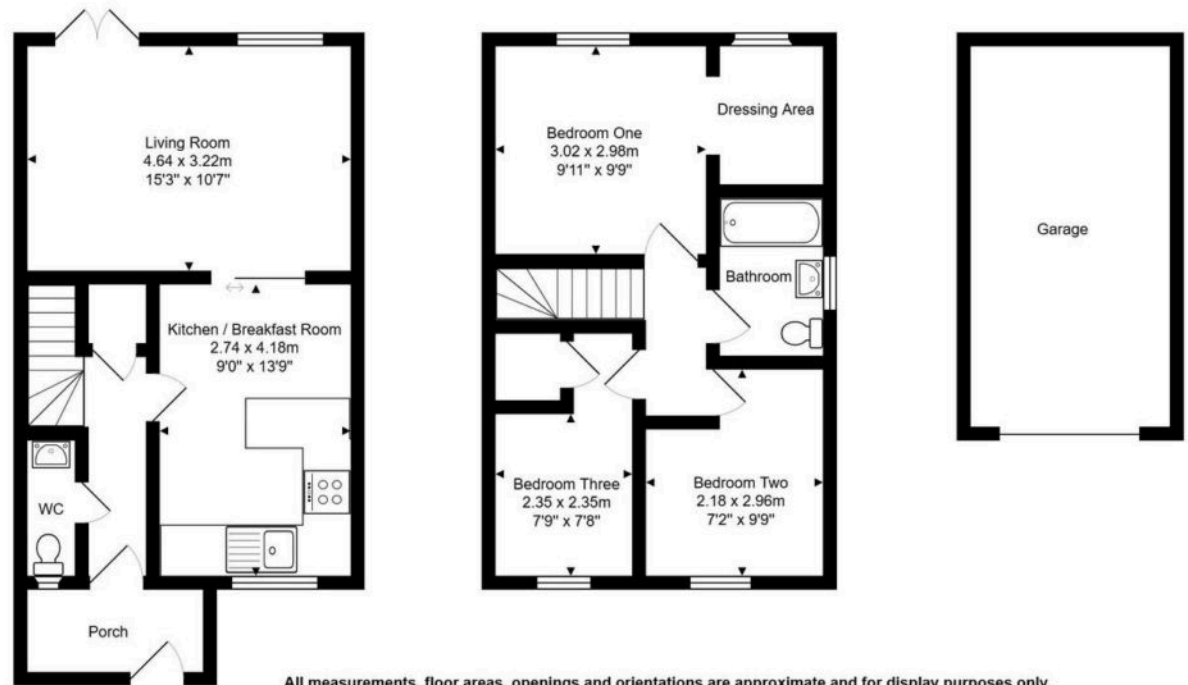
Leicester, Leicester

**** CALL TO ARRANGE A VIEWING **** THREE bedroom house **** SPACIOUS kitchen/ diner and having a STYLISH, SNAZZY look to it **** DETACHED GARAGE and OFF ROAD PARKING **** WC **** refurbished to a HIGH STANDARD *

Council Tax band: B

Tenure: Freehold

- A marvelous three bedroom end of town house
- Refurbished internally to a high standard and is ready to move into
- Spacious kitchen/ diner which has a stylish, snazzy look to it, with a breakfast bar and integrated appliances
- The living room is modern with French double glazed doors
- Bedrooms are of a nice size
- Modern bathroom with an over bath shower
- A well proportioned rear garden with grassed and patio areas
- Off road parking and access to a detached garage
- The house is situated on the end of a corner position within the Thurcaston Park development



All measurements, floor areas, openings and orientations are approximate and for display purposes only.
They should not be relied upon and do not form as any part of agreement.
All parties must rely on their own inspections and no liability is taken for any errors.

14 Taverers Road

Leicester, Leicester

**** CALL TO ARRANGE A VIEWING -** This marvelous three bedroom end of town house offers a superb opportunity for buyers seeking a stylish and contemporary home within the popular Thurstaston Park development. Refurbished internally to a high standard, the house is ready to move into and boasts a functional spacious kitchen/ diner to the ground floor.

Upon entering, you are greeted by a welcoming porch area leading through to the hallway which has access to a WC and leads to that spacious kitchen dining area, which stands out with its snazzy, modern design. The kitchen features a breakfast bar, integrated appliances, and ample storage, making it ideal for both every-day living and entertaining guests. The adjoining living room is impressive, finished in a modern style and benefitting from French double glazed doors that allows plenty of natural light to flow into this room.

Upstairs, the three bedrooms are of a nice size, each thoughtfully decorated to create a comfortable and inviting atmosphere. The trendy bathroom has been fitted with contemporary fixtures and includes an over bath shower, providing both convenience and a touch of luxury.

Externally to the rear, the garden features a nice sized patio area which would be perfect for entertaining and a grass area for summer fun with the family. There is a well proportioned summer house ready to be used as desired.

Additional features include off road parking and access to a detached garage (perfect for storage or additional parking needs depending on the size of your car). Situated on the end of a corner, this beautiful house enjoys being placed in a lovely position within the development. With its high quality finish, nice layout, and desirable location, this home is perfectly suited for families, professionals, and anyone looking for a move-in ready house with a modern edge. Early viewing is highly recommended to fully appreciate all that this wonderful home has to offer.



GARDEN

Well proportioned rear garden with patio and grassed area's.

Off street

1 Parking Space

Off road parking.

Garage

Single Garage

Detached garage which if required could be used for storage, this is down to personal preference.

Location

Located within the Thurcaston park development, the area has brilliant road links to various destinations which includes the A46 to Loughborough, the M1 motorway and the village of Birstall (hosting a selection of shops, Santander Bank and a Tesco Express). You are also within close proximity to Beaumont Leys Shopping Centre, hosting an array of stores including Tesco Extra Supermarket, Aldi Supermarket, Pets At Home, Santander Bank, Elliott's, Estate Agents and a Leisure Centre. The local schools are close by and include Heatherbrook Primary and Beaumont Lodge Primary.









SCAN THE QR CODE FOR MORE DETAILS

