

Castles

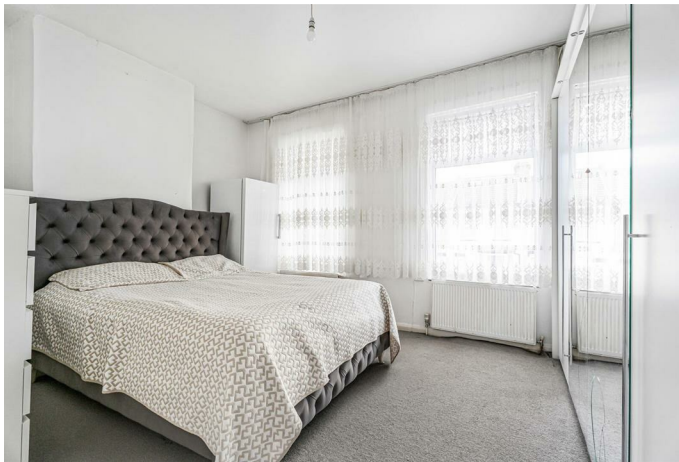
OFFERS IN EXCESS OF
£385,000
Lowden Road
London, N9 8RL



PROPERTY SUMMARY

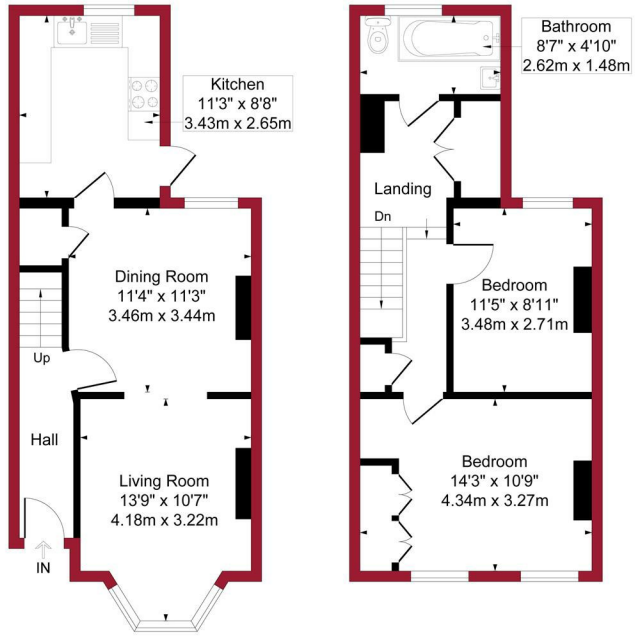
A two bedroom Victorian End of Terrace property situated within 1/2 mile of Edmonton Green with its shops and transport links. The property comprises of Reception, Dining area and kitchen to ground floor with a further two bedrooms and bathroom to first floor. The property also has features to include; double glazing , gas central heating, rear garden and is offered for sale on a chain free basis





Lowden Road, London, N9

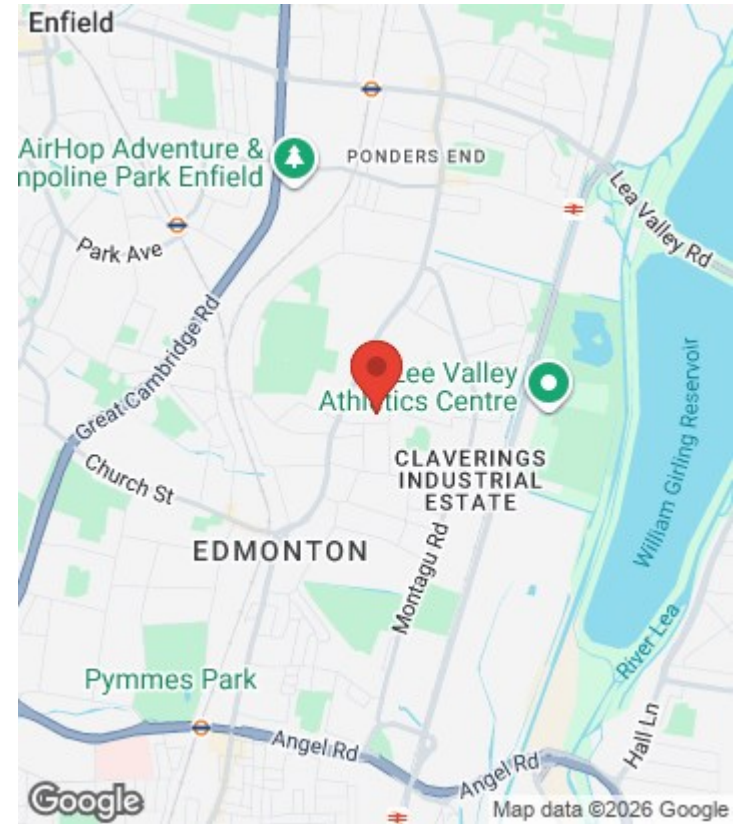
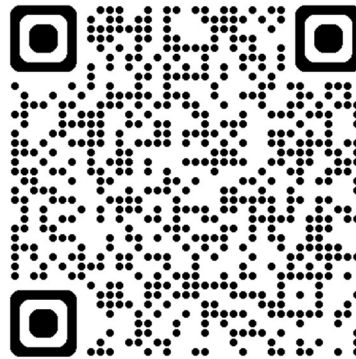
Approximate Gross Internal Area = 858 sq ft / 79.6 sq m



Ground Floor
Gross Internal
Floor Area 433 sq ft / 40.2 sq m

First Floor
Gross Internal
Floor Area 425 sq ft / 39.4 sq m

For a guide to the area
please scan this code for
more information



House - End Terrace

Freehold

Council: Enfield

Council Tax Band: C

Agents Note: Whilst every care has been taken to prepare these particulars, they are for guidance purposes only. All measurements are approximate and are for general guidance purposes only and whilst every care has been taken to ensure their accuracy, they should not be relied upon and potential buyers/tenants are advised to recheck the measurements



OFFICE ADDRESS

438 Hertford Road
Edmonton
London
N9 8AB

OFFICE DETAILS

020 8804 8123
edmonton@castles.london
<https://www.castles.london/>

Energy Efficiency Rating		Current	Potential
Very energy efficient - lower running costs			
(92-101) A	(81-91) B		87
(69-80) C	(55-68) D	60	
(39-54) E	(21-38) F		
(1-10) G			
Not energy efficient - higher running costs			
England & Wales		EU Directive 2002/91/EC	