



Harrow Road, NW10

£2,800 Per calendar month

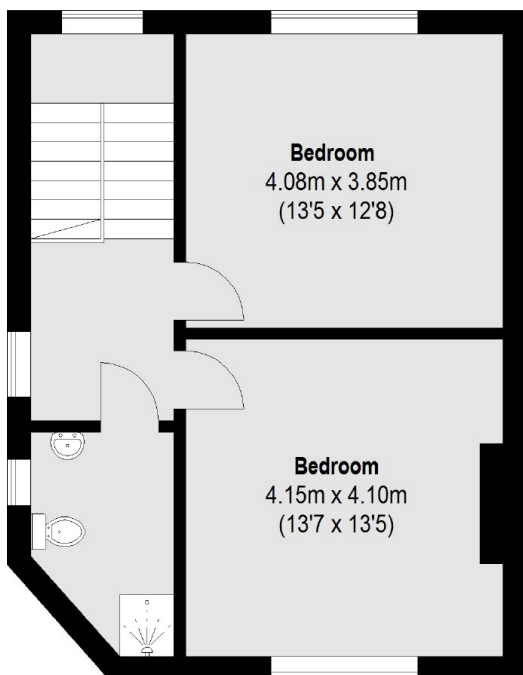
A spacious three bedroom property with two bathrooms. Arranged over two floors, the property has its own private entrance, a large front facing reception and a terrace.

The nearest stations are Kensal Green and Willesden Junction. And the property is within easy reach of the shops along Harrow Road.

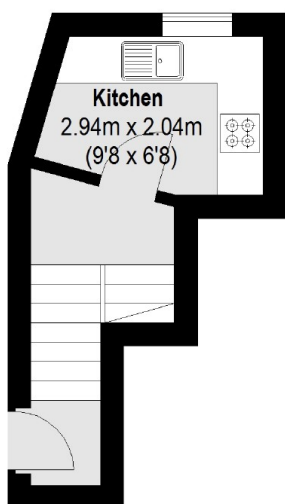
Features

- Three Bedrooms
- Two Bathrooms
- Terrace
- Recently Repainted
- Private Entrance
- Great Location

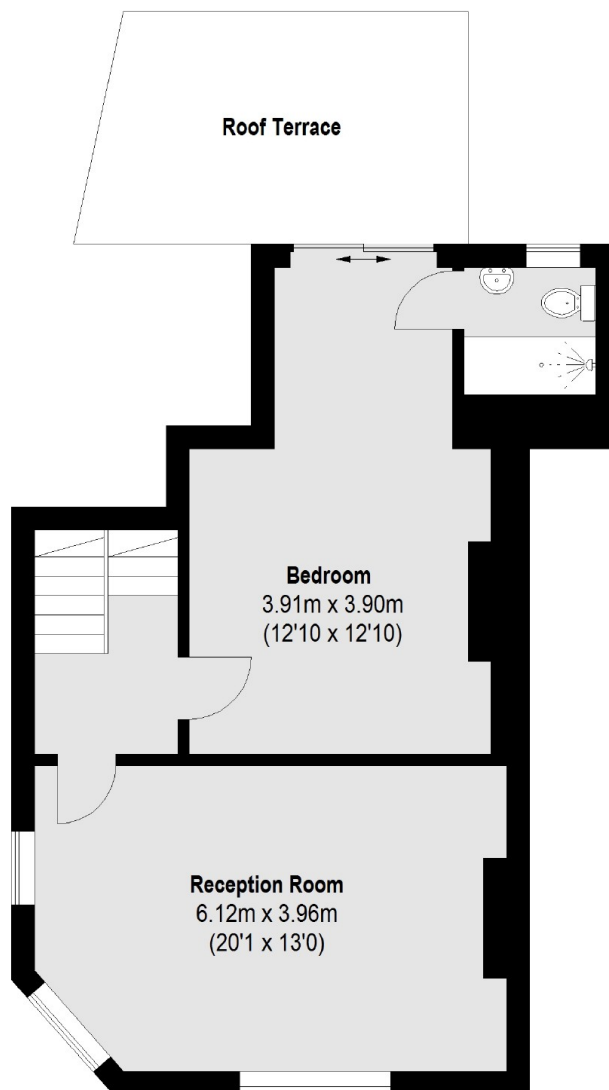
Harrow Road, London, NW10



Second Floor



Ground Floor



First Floor

Total area (approx.): 113.82 sq. m (1225 Sq. ft)

Roof Terrace : 14.32 sq. m (154 Sq. ft)