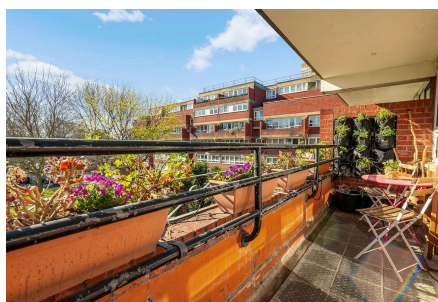
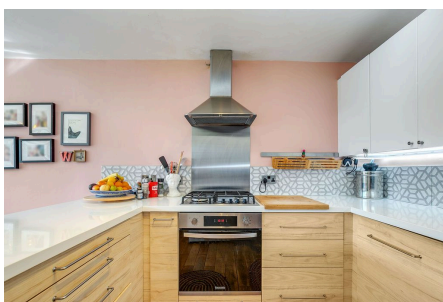


Bullen Street, Battersea, SW11

£500,000 - £550,000

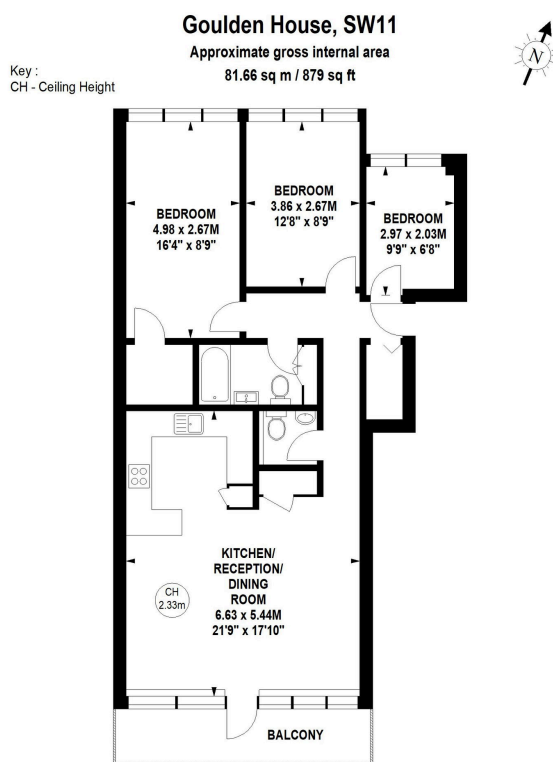
3 1 1



PLEASE QUOTE MR0560 - GUIDE PRICE £500K - £550K - Superbly located in the heart of Battersea, just a short walk from the river and Clapham Junction station, this well presented three bedroom second floor purpose built flat (879 Sq.Ft) with private south facing balcony overlooking beautiful gated communal gardens, and low outgoings. The property offers bright and spacious accommodation with modern interiors throughout - perfect for homeowner or investor buyer alike in this popular well maintained residential block. Features include an inviting open plan reception/kitchen, modern bathroom with white suite, guest WC, electric heating, double glazing, ample inbuilt storage and solid wood flooring.

Key Features

- PLEASE QUOTE MR0560
- Well Presented Three Bedroom Second Floor Flat (879 Sq.Ft)
- Fantastic Battersea Location
- Modern Interiors
- Bright and Spacious Open Plan Reception/Kitchen
- Private South Facing Balcony Overlooking Gated Communal Gardens
- Modern Bathroom
- Low Outgoings
- Close to Clapham Junction Station and the Thames
- Easy Access Vibrant Shops and Amenities



Second Floor

Although every attempt has been made to ensure accuracy, all measurements are approximate.
This floorplan is for illustrative purposes only and not to scale.
Measured in accordance with RICS standards.