

8 Bonningtons Yard Station Road

Takeley, Bishop's Stortford

Welcome to Bonningtons Yard. With three double bedrooms, an ensuite, double garage plus a spacious private garden, this new build home set within a peaceful gated development is beautiful inside and out.

Council Tax band: TBD

Tenure: Freehold

- Three double bedrooms
- Double garage
- Gated new build development
- Primary bedroom with ensuite
- Spacious private garden
- Short drive to the M11



Hallway

WC

Living / Dining Room

25' 8" x 15' 10" (7.82m x 4.83m)

Kitchen

17' 1" x 11' 8" (5.20m x 3.56m)

Utility Room

Double garage

19' 10" x 19' 6" (6.04m x 5.94m)

Primary Bedroom

17' 1" x 15' 11" (5.21m x 4.85m)

Ensuite Shower Room

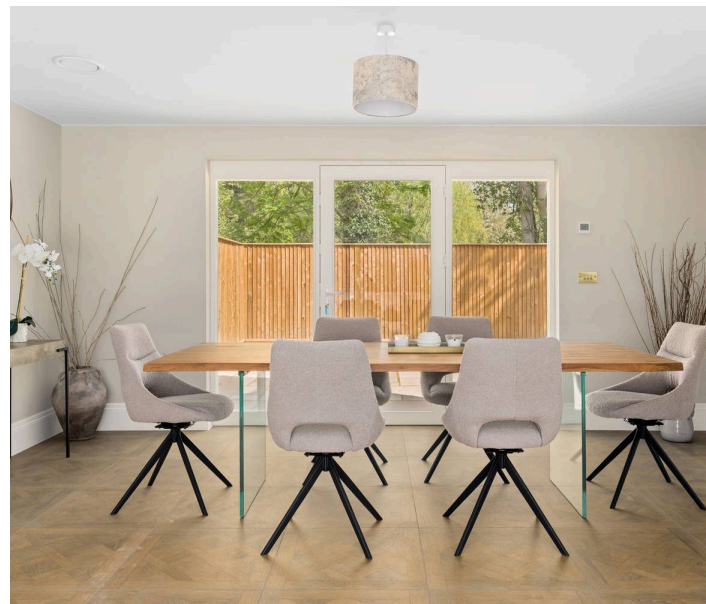
Bedroom

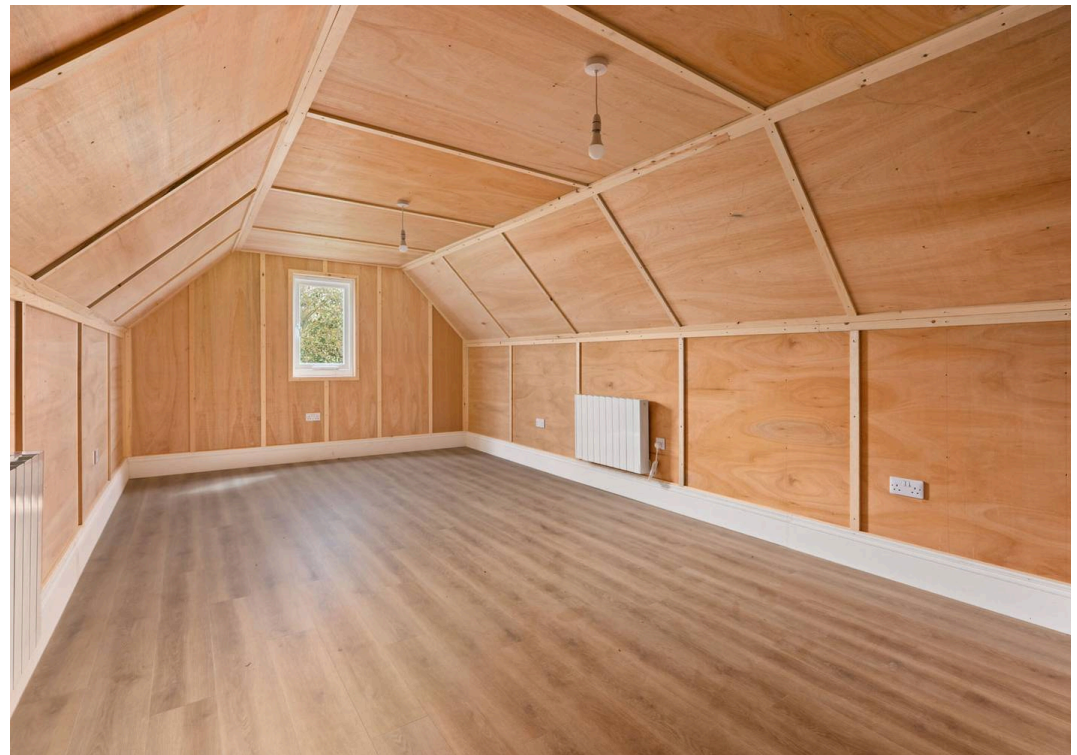
17' 5" x 10' 8" (5.30m x 3.25m)

Bedroom

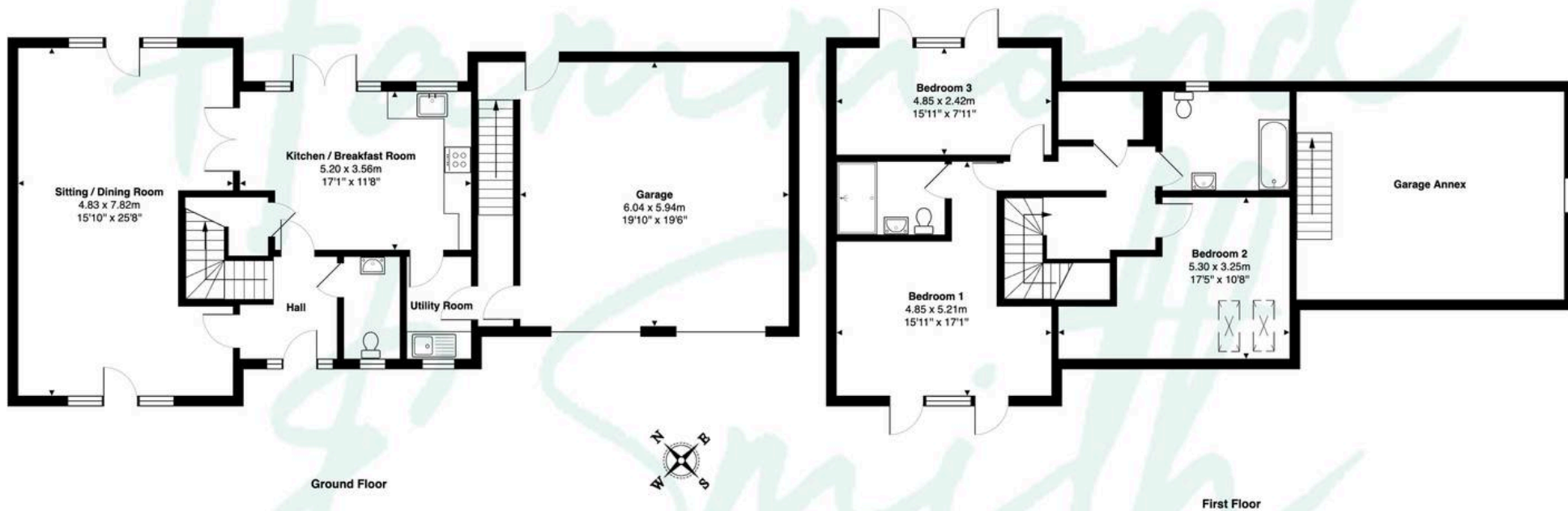
15' 11" x 7' 11" (4.85m x 2.42m)

Bathroom





8 Bonningtons Yard, Takeley, Bishop's Stortford, CM22 6SQ



Total Area: 211.3 m² ... 2274 ft²

This floor plan is for illustrative purposes only and is not to scale.
Measurements are approximate and intended as a guide. All details should be verified independently.