



8 Hook Close, Beeston, Nottingham, NG9 5AT

£975 Per Month

8 Hook Close, Nottingham NG9 5AT

TWO BEDROOM PROPERTY WITH ENSUITES – QUIET AREA

Robert Ellis are pleased to present this well-presented two-bedroom home, ideally situated in the heart of Chilwell.

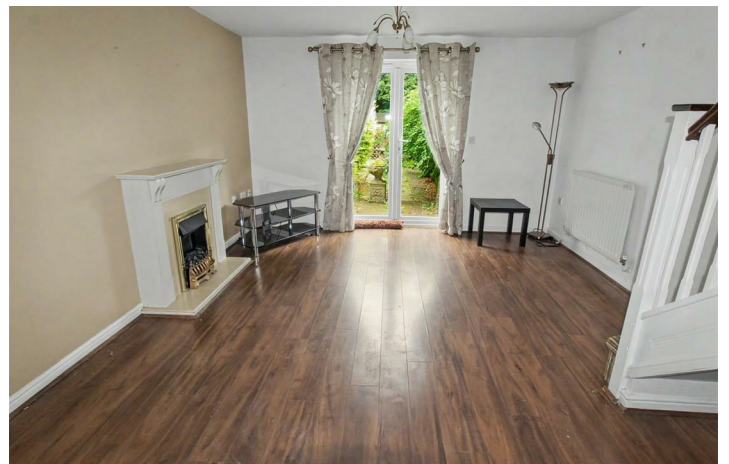
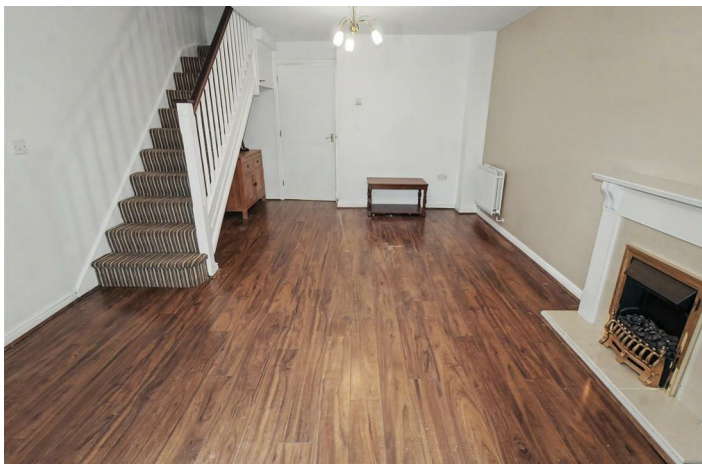
Offered on a part-furnished basis, the property briefly comprises an entrance hall, a convenient downstairs WC, a fitted kitchen, and a spacious living room with patio doors opening onto the private rear garden.

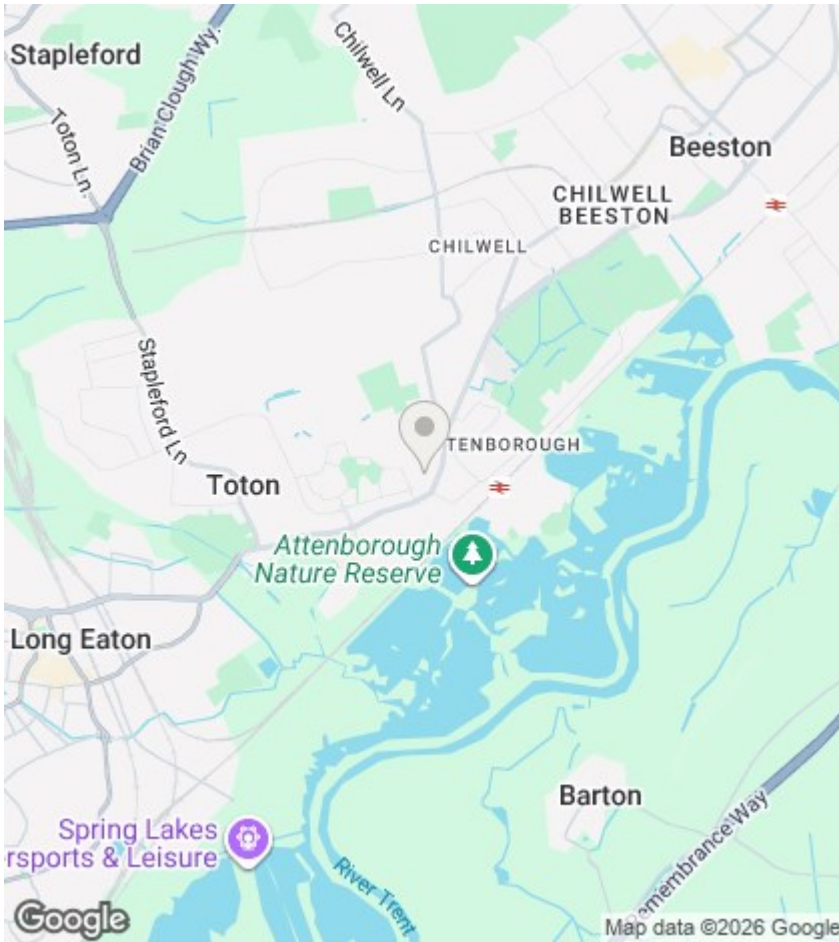
To the first floor, there are two generously sized double bedrooms. The principal bedroom benefits from an en-suite bathroom, while the second double bedroom features an en-suite shower room.

Ideally located close to local amenities, excellent transport links, and reputable schools, this property is perfectly suited to professionals, couples, or small families seeking comfortable accommodation in a sought-after



Council Tax Band: B





Directions

Viewings

Viewings by arrangement only. Call 0115 9229090 to make an appointment.

EPC Rating:

C

Energy Efficiency Rating		Current	Potential
Very energy efficient - lower running costs			
(92 plus) A			
(81-91) B			
(69-80) C		74	
(55-68) D			
(39-54) E			
(21-38) F			
(1-20) G			
Not energy efficient - higher running costs			
England & Wales		EU Directive 2002/91/EC	