

The Hyde

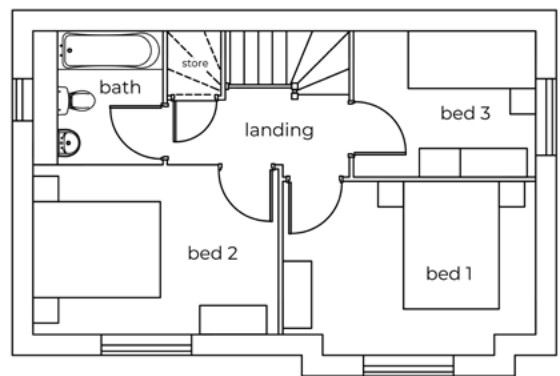
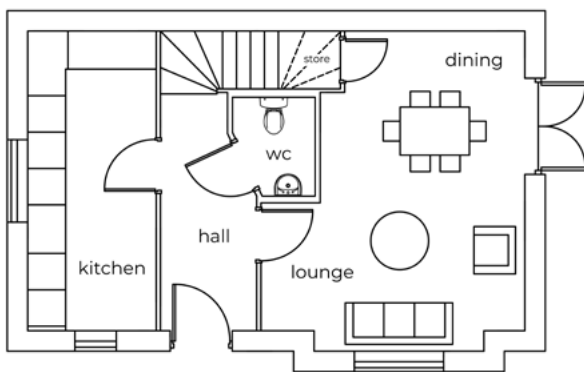
3 bedroom semi detached/detached house with driveway



Seddon Homes.co.uk

Ground floor

First floor



Lounge/Dining Area	14'3" x 16'2"
Kitchen	6'11" x 16'2"
WC	4'6" x 5'7"

Master Bedroom	13'6" x 8'2"
Bedroom 2	13'1" x 8'10"
Bedroom 3	9'9" x 7'9"
Bathroom	6'11" x 7'1"