

2 The Grain Store, Woodside Green Great Hallingbury

Completely unique and beautifully crafted from floorboard to rafter, welcome to The Grain Store. One of two 4/5 bedroom homes, with five ensuite bathrooms, sweeping countryside views and a layout of dreams. The ultimate hosting home for a family to love and grow within.

Council Tax band: TBD

Tenure: Freehold

- Unique 4/5 bedroom barn style home
- Picturesque countryside views
- Exclusive new build development
- Five ensuite bathrooms
- Open plan kitchen / family room
- Beautiful interiors



Entrance Hallway

Primary Bedroom

17' 5" x 16' 2" (5.30m x 4.92m)

Ensuite Shower Room

Dressing Room

17' 5" x 10' 2" (5.30m x 3.11m)

Ensuite Bathroom

Bedroom

17' 5" x 13' 10" (5.30m x 4.22m)

Ensuite Shower Room

Bedroom

17' 5" x 11' 7" (5.30m x 3.54m)

Ensuite Shower Room

WC

Utility Room

Boiler Room

Kitchen / Family Room

31' 5" x 17' 2" (9.57m x 5.24m)

Sitting Room

17' 11" x 16' 8" (5.45m x 5.09m)

Bedroom

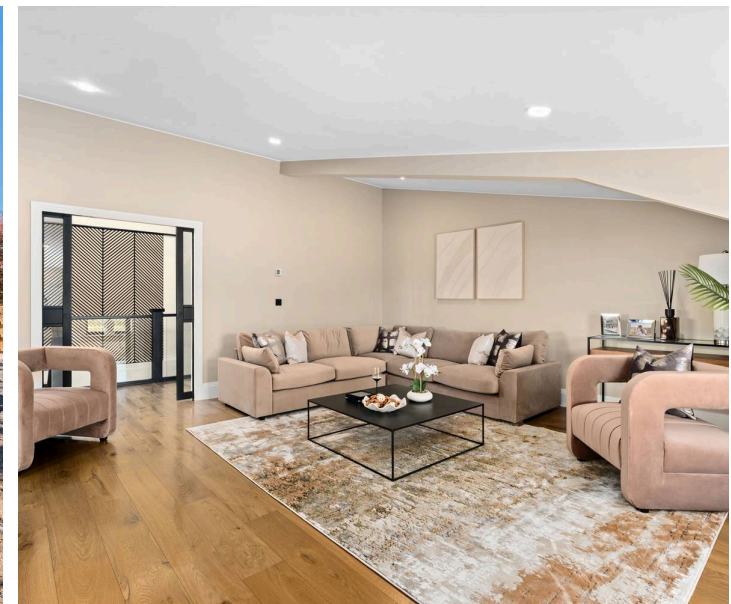
17' 11" x 13' 0" (5.45m x 3.97m)

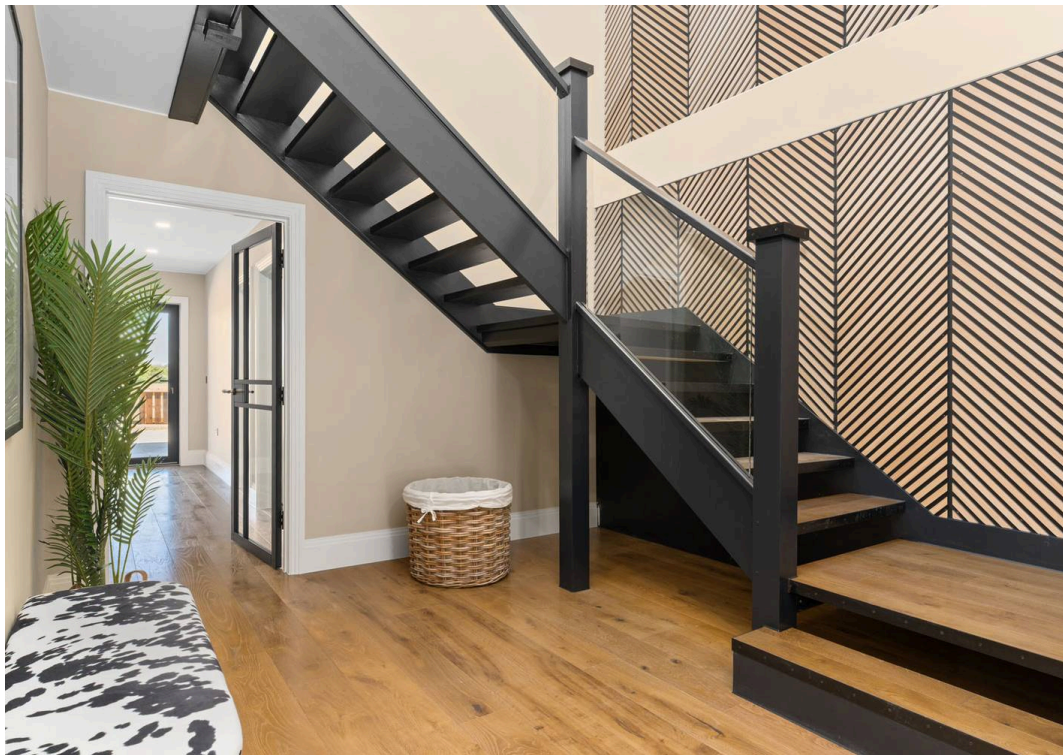
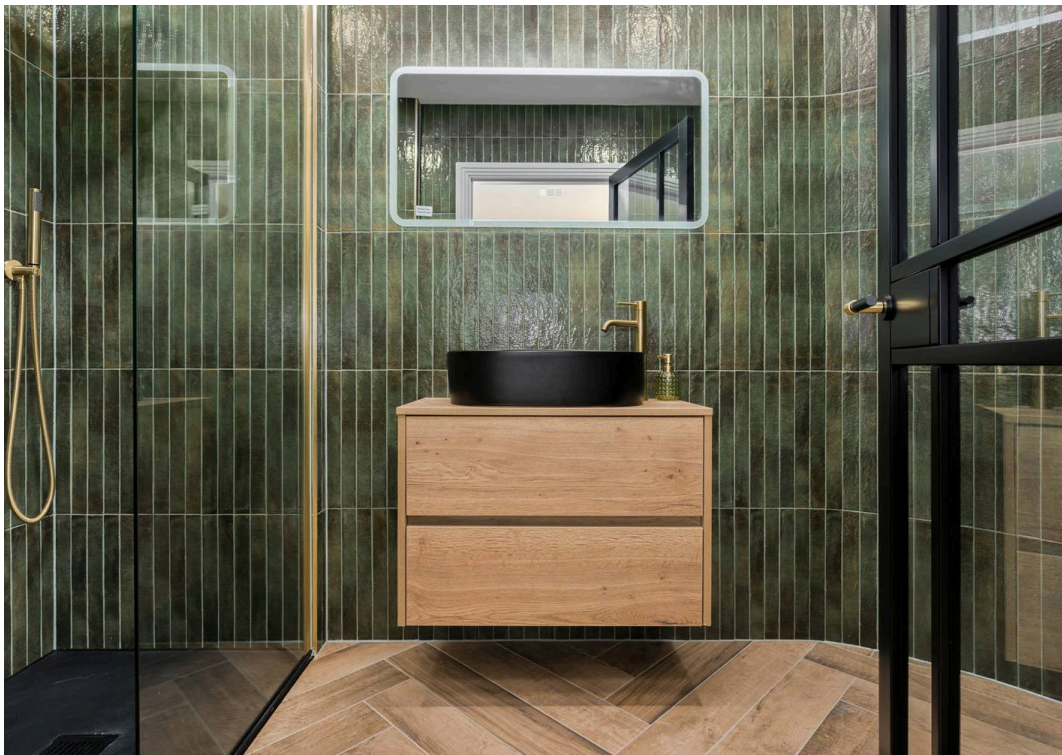
Ensuite Shower Room

Bedroom / Office

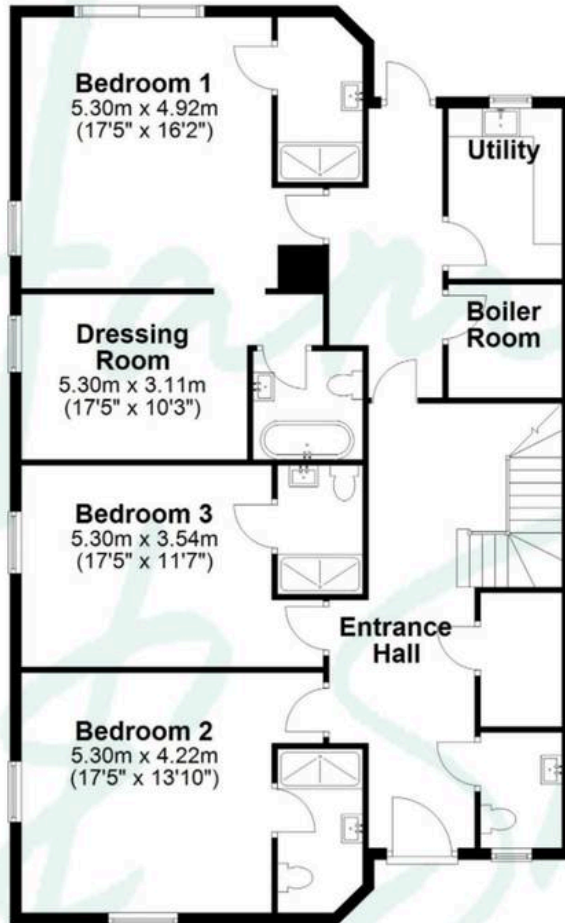
13' 0" x 9' 0" (3.97m x 2.75m)

WC

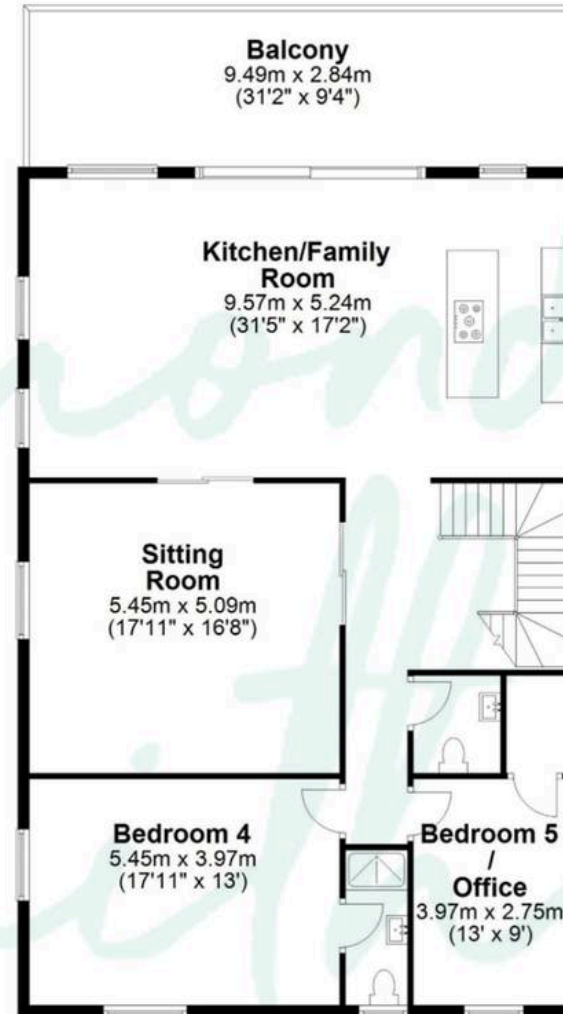




2 The Grain Store, Woodside Green



Ground Floor



First Floor

Total area: approx. 277.8 sq. metres (2990.6 sq. feet)

This floor plan is for illustrative purposes only and is not to scale.
Measurements are approximate and intended as a guide. All details should be verified independently.