



5 Eastwell Close, Shadoxhurst
£575,000

Skippers

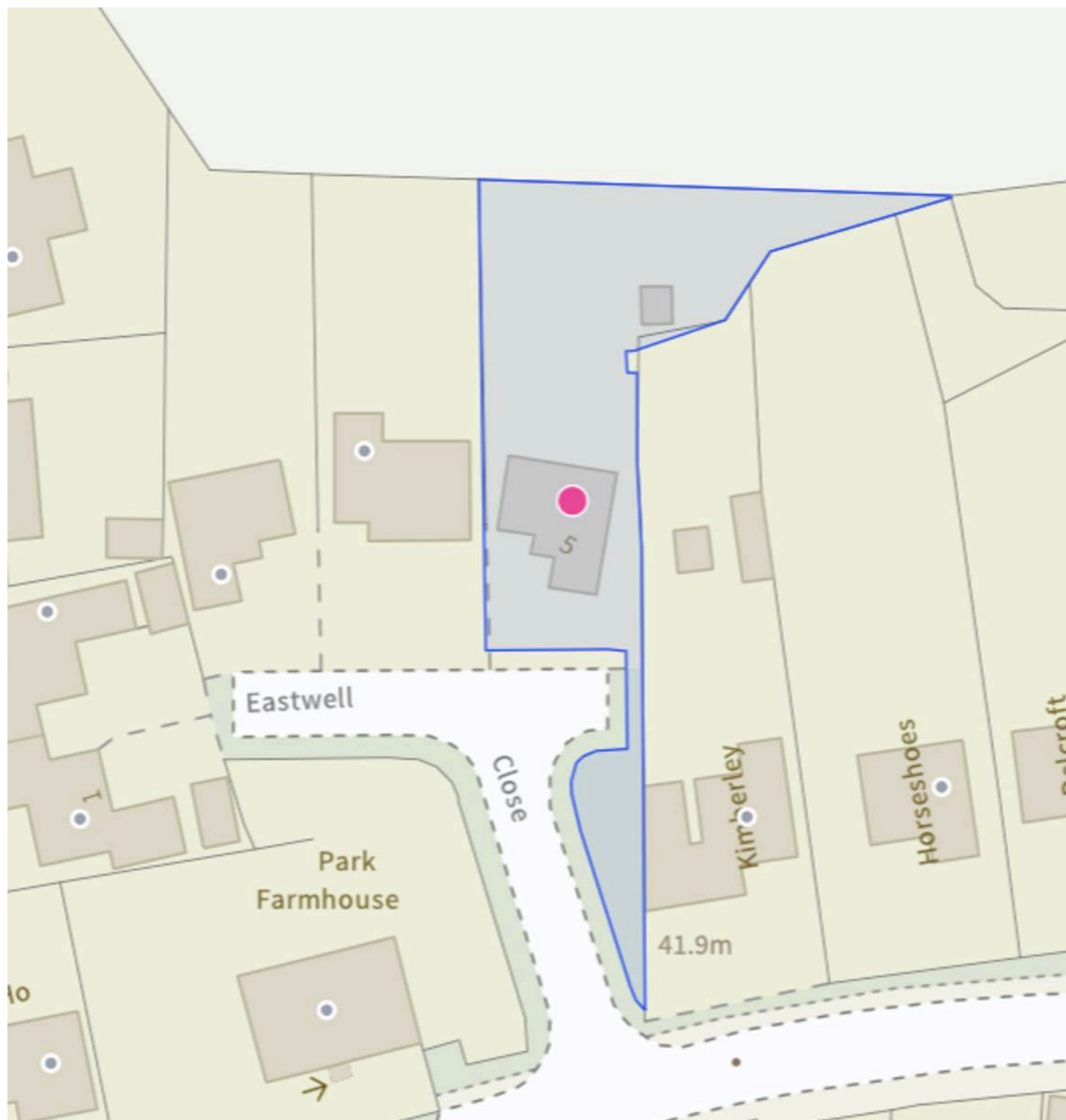
5 Eastwell Close

Shadoxhurst, Ashford

Spacious 4-bed detached home in Shadoxhurst cul-de-sac. Modern kitchen, en-suite, landscaped gardens, garage, parking, close to Ashford, Tenterden, and local amenities. Ideal family living. Council Tax band: F

Tenure: Freehold

- Spacious 4 Bedroom Detached Family Home
- Fantastic Sized Plot
- Family Bathroom as well as En-suite & Cloakroom
- Garage with electric roller door, door to inner hallway and Driveway
- Double Aspect Lounge
- Modern Fitted Kitchen with Integrated Appliances, Baking Station and Dining Room
- Popular Shadoxhurst Village Cul-de-sac Location
- Good Access to Ashford International Train Station, Tesco Shopping Centre & Tenterden



Porch

Leading to hallway.

Hallway

With stairs leading to first floor, understairs storage cupboard and doors leading through to lounge, dining room, kitchen, cloakroom and garage.

Cloakroom

Low level wc and wash hand basin.

Lounge

21' 1" x 11' 11" (6.43m x 3.63m)

Double aspect with window to front and patio doors flanked by windows leading to rear garden. There is also an attractive cast iron fireplace with wooden surround and marble hearth.

Kitchen

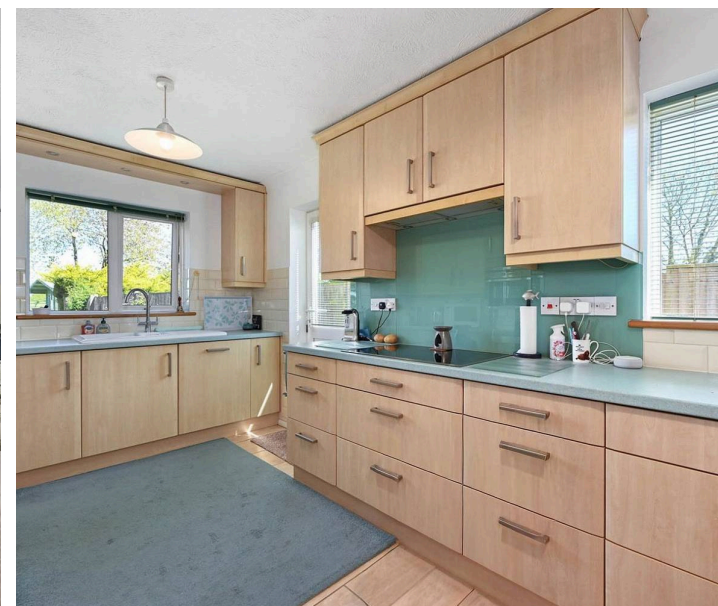
17' 9" x 8' 7" (5.41m x 2.62m)

Good range of cupboards and drawers beneath worksurfaces with additional wall mounted units, double aspect with windows to side and rear, door to side, electric hob with extractor fan over, integrated fridge/freezer and dishwasher, double eye level oven, sink with mixer tap, partially tiled walls.

Dining Room

11' 4" x 9' 0" (3.45m x 2.74m)

Window to rear.





Landing

Airing cupboard and doors to bedrooms and family bathroom.

Bedroom

20' 2" x 11' 1" (6.15m x 3.38m)

Range of fitted wardrobes and window to front.

En-suite

White suite comprising tiled shower cubicle, pedestal wash hand basin, W.C., fully tiled walls and obscured window to front.

Bedroom

12' 0" x 11' 5" (3.66m x 3.48m)

Window outlook to front.

Bedroom

14' 1" x 7' 9" (4.29m x 2.36m)

Window outlook to rear.

Bedroom

12' 1" x 9' 2" (3.68m x 2.79m)

Window outlook to rear.

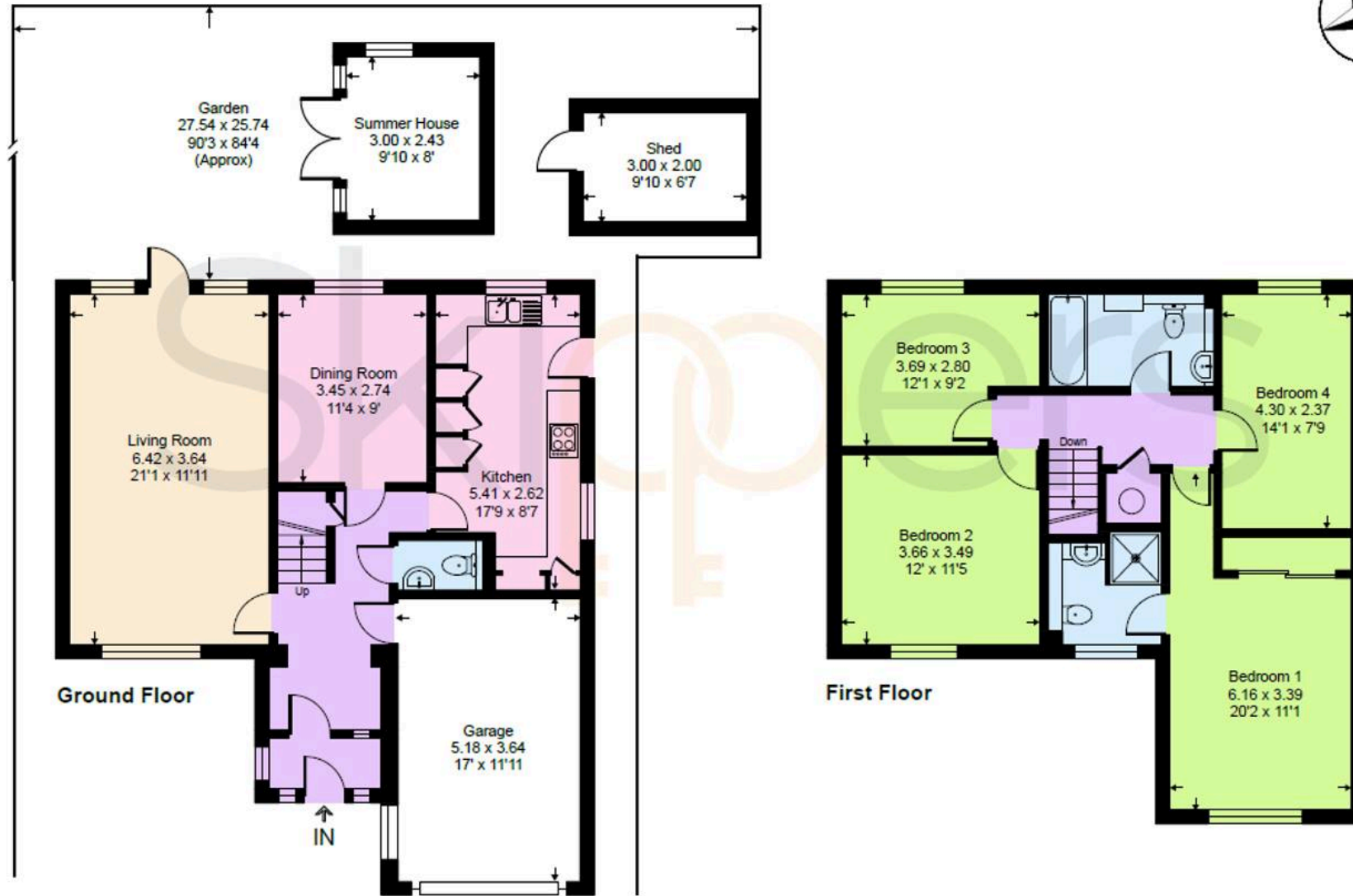
Family Bathroom

White suite comprising low level wc wash hand basin, panelled bath with mixer tap, shower attachment and shower screen, obscured window to rear, fully tiled walls.



Eastwell Close, TN26

Approximate Gross Internal Area = 132.1 sq m / 1422 sq ft
Approximate Garage Internal Area = 17.2 sq m / 186 sq ft
Approximate Outbuildings Internal Area = 13.1 sq m / 142 sq ft
Approximate Total Internal Area = 162.4 sq m / 1750 sq ft



This floor plan is for representation purposes only as defined by the RICS code of Measuring Practice (and IPMS where requested) and should be used as such by any prospective purchaser. Whilst every attempt has been made to ensure the accuracy contained here, the measurement of doors, windows and rooms is approximate and no responsibility is taken for any error, omission or mis-statement. Specifically no guarantee is given on the total area of the property if quoted on the plan. Any figure provided is for guidance only and should not be used for valuation purposes.



Skippers Estate Agents – Ashford

5 Kings Parade High Street, Ashford – TN24 8TA

01233 632383

ashford@skippers-ea.co.uk

skippers-ea.co.uk

The logo for Skippers Estate Agents, featuring the word "Skippers" in a white, sans-serif font. The letter "i" is replaced by a stylized orange key icon. The logo is set against a dark blue background.

Skippers

