

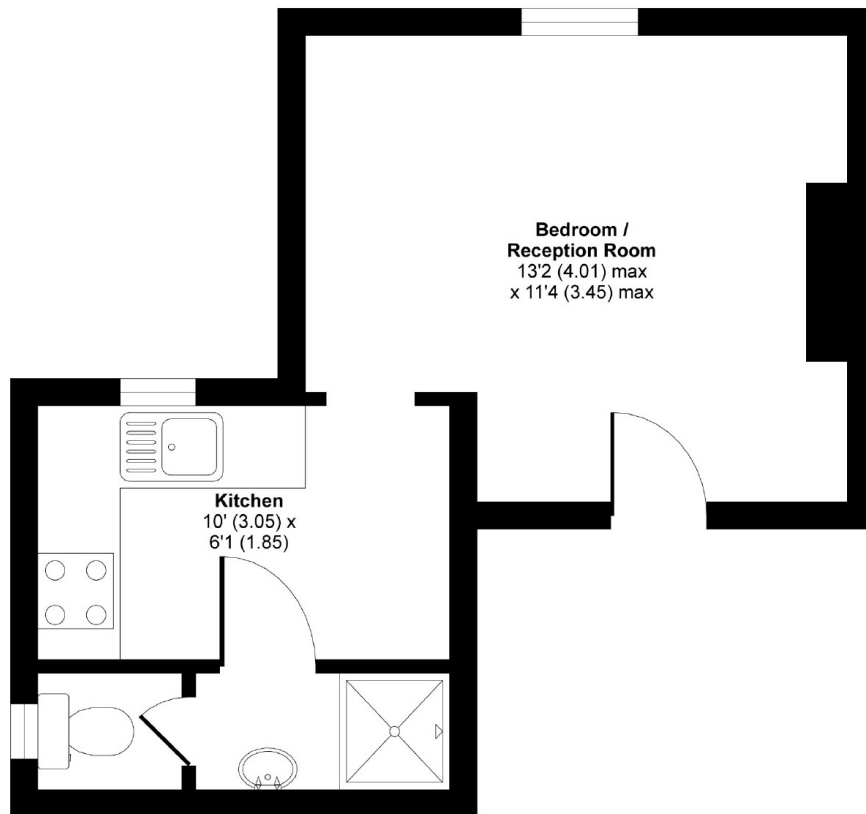


SISTOVA ROAD, SW12

£1,200 PCM

- Large studio room
- Modern fitted kitchen
- Bathroom suite
- Good decorative order
- Close to Balham Station
- Energy rating: D





FIRST FLOOR

APPROX. GROSS INTERNAL FLOOR AREA 235 SQFT / 21.8 SQM

Sistova Road, Balham SW12

Copyright nichecom.co.uk 2009 Produced for Jacksons the Independent Estate Agents REF : LE094872

**JACKSONS BALHAM**

8-11 Balham Station Road,  
London, SW12 9SG  
Sales: 020 8675 6555  
Lettings: 020 8675 6565

Energy Rating: D We aim to make our particulars both accurate and reliable. However they are not guaranteed; nor do they form part of an offer or contract. If you require clarification on any points then please contact us, especially if you're traveling some distance to view. Please note that appliances and heating systems have not been tested and therefore no warranties can be given as to their good working order.