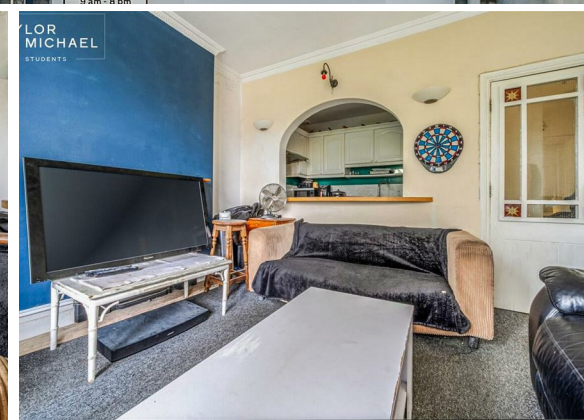




7 Bed
Maisonette
located in


£3,640

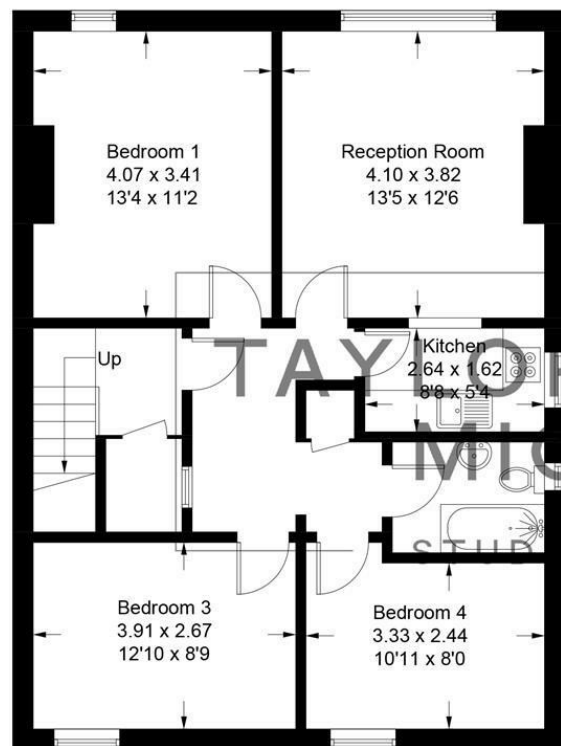


TAYLOR
MICHAEL
STUDENTS

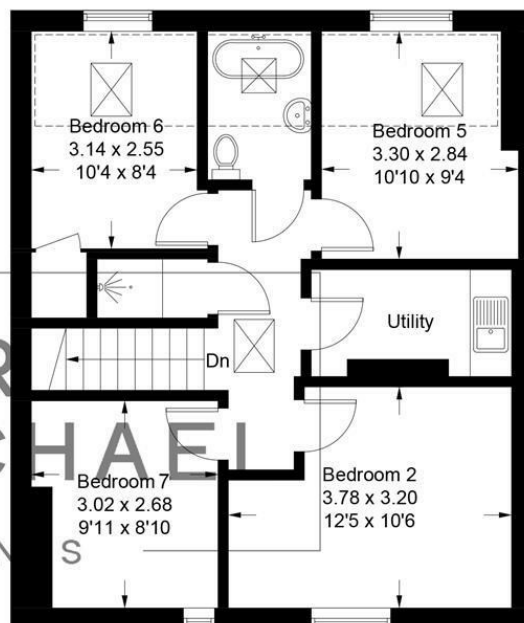
Denmark Villas, Hove, BN3 3TD

Approximate Gross Internal Area = 133.1 sq m / 1433 sq ft

 = Reduced headroom below 1.5m / 5'0

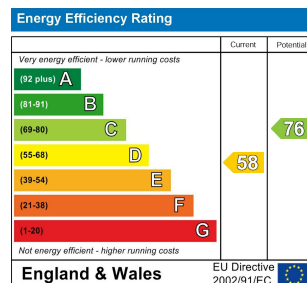


First Floor



Second Floor

Illustration for identification purposes only, measurements are approximate, not to scale.
Imageplansurveys @ 2026



DIRECTIONS

CONTACT

62 Church Road
Hove
East Sussex
BN3 2FP

E: lettings@taylormichael.agency
T:
<https://taylormichael.agency/>

**TAYLOR
MICHAEL**
STUDENTS