



**Guide Price**

**£750,000**

**Freehold**

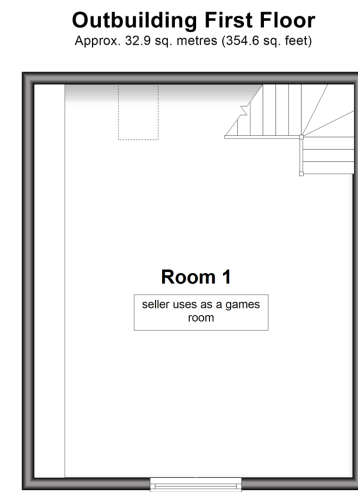
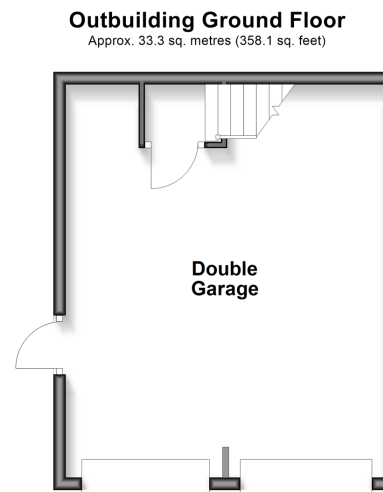
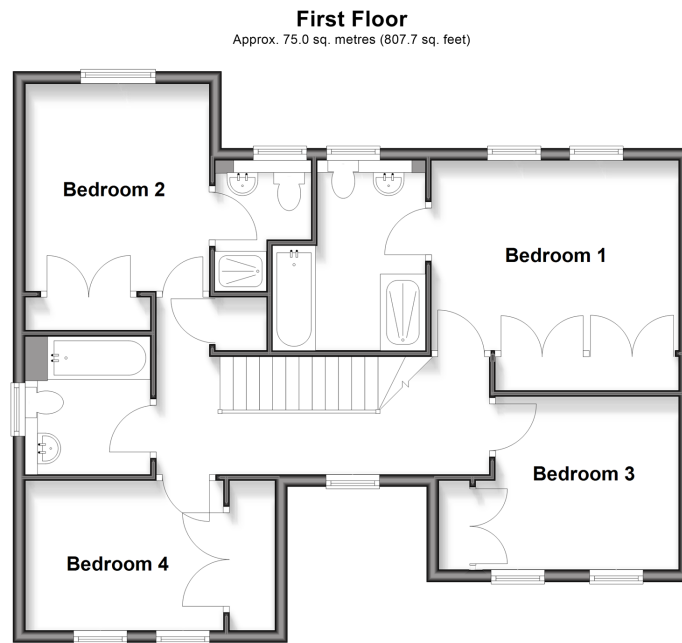
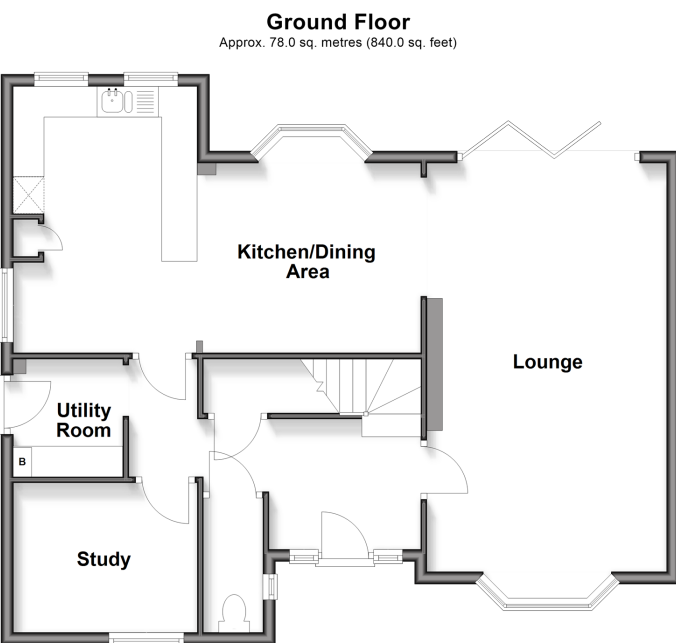
4x  3x  2x 

**Freshland Road,  
Maidstone, Kent ME16**

**OVER 60?**

Secure this property  
for up to **59% less!**

*Wards*  
Helping you move forwards



## Accommodation

### GROUND FLOOR

Hallway  
Toilet  
Study: 9'3 x 8'0 (2.82m x 2.44m)  
Utility Room  
Kitchen/Dining Area: 14'3 x 9'8 (4.35m x 2.95m)  
plus 10'2 x 9'9 (3.10m x 2.97m)  
Lounge: 21'9 x 12'8 (6.63m x 3.86m)

### FIRST FLOOR

Landing  
Bedroom 1: 13'0 x 10'6 (3.97m x 3.20m)  
En-Suite Shower Bathroom  
Bedroom 2: 12'0 x 9'8 (3.66m x 2.95m)  
En-Suite Shower Room  
Bedroom 3: 9'8 x 9'2 (2.95m x 2.80m)  
Bedroom 4: 10'4 x 8'3 (3.15m x 2.52m)  
Bathroom

### OUTBUILDING GROUND FLOOR

Double Garage

### OUTBUILDING FIRST FLOOR

Room 1

### OUTSIDE

Rear Garden  
Front Garden  
Driveway





## Main features

- Substantial modern house
- Family bathroom and 2 en-suite shower rooms
- Double detached garage with studio over
- Spacious corner plot with large patio and pergola
- Modern fitted open plan kitchen/dining area



## Nearest Schools

Primary Schools: St Francis' Catholic Primary, Maidstone 0.3 miles, West Borough Primary 0.3 miles, Palace Wood Primary 0.7 miles  
Secondary Schools: St Simon Stock Catholic School 0.3 miles

## Transport Information

Train Stations: East Farleigh 0.7 miles, Barming 0.8 miles, Maidstone Barracks 1.1 miles

## Address

Freshland Road, Maidstone, Kent ME16

## Directions

For directions to this property please contact us.







Call Maidstone Branch 01622 683737 ■ [wardsofkent.co.uk](http://wardsofkent.co.uk)



- Legal advice should be taken to verify fixtures/fittings, planning, alterations and/or lease details
- Appliances & services are untested, dimensions are approximate and floor plans are not to scale
- Through a Homewise Home For Life Plan people aged 60+ can secure this property for up to 59% less, by purchasing a Lifetime Lease



13159188/20260119/CV/DS