

for sale

offers in the region of

**£260,000**



**Dorchester Road Taunton TA2 7JN**

Standing proudly on the NORTH SIDE of Taunton, this semi-detached family home has been SIGNIFICANTLY IMPROVED by the current owner. Benefits include a generous SUNNY GARDEN, gas central heating, double glazing and parking.





# Dorchester Road Taunton TA2 7JN

## Front Door

Leading to...

## Entrance Porch

Obscure glazed door through to the....

## Entrance Hall

Radiator. Under stairs storage area.

## Lounge / Diner

19' 11" max x 16' 1" max ( 6.07m max x 4.90m max )  
An 'L' shaped room. Double glazed window to front. Double glazed sliding patio door to rear opening to outside. Radiators.

Feature fireplace.

## Kitchen

11' 7" x 9' ( 3.53m x 2.74m )

Equipped with a range of wall and base-mounted units with rolltop worksurface, including a sink and drainer with mixer tap. Integrated electric oven and hob with cooker hood over. Partial tiling. Double glazed window to front. Single glazed window to side.

## Shower Room

Suite comprising low-level WC, wash hand basin, separate shower cubicle with integral shower. Obscure double glazed window to side. Inset lights.





## Utility

Single glazed window to rear. Base-mounted unit with rolltop work surface including a one and a half bowl sink and drainer with mixer tap. Recesses include plumbing for an automatic washing machine. Inset lights.

## First Floor Landing

Double glazed window to side. Attic hatch. Recessed cupboard.

## Main Bedroom

12' 6" x 10' 10" max ( 3.81m x 3.30m max )  
Double glazed window to front. Radiator.

## Bedroom Two

11' 3" max x 11' 3" max ( 3.43m max x 3.43m max )  
Double glazed window to rear. Radiator.

## Bedroom Three

10' 8" x 9' 7" max ( 3.25m x 2.92m max )  
Double glazed window to front. Radiator.

## Bathroom

Suite comprising pedestal wash hand basin, bath with mixer tap and integral shower over with 'waterfall' feature. Shower panel. Obscure double glazed window to rear. Heated towel rail. Full tiling.

## Separate Cloakroom

Suite comprising low-level WC. Obscure double glazed window to rear. Full tiling.

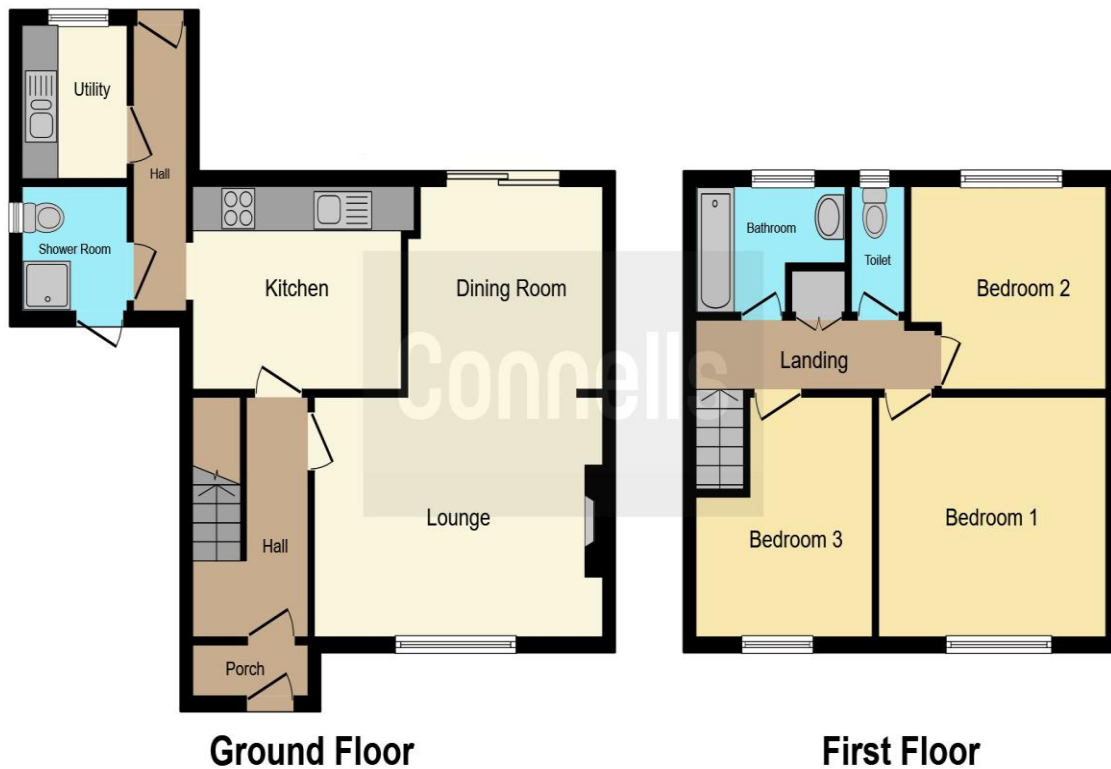
## Rear Garden

A generous garden laid to patio and lawn.

## Parking

to the side of the property with space for one car.





This floor plan is for illustrative purposes only. It is not drawn to scale. Any measurements, floor areas (including any total floor area), openings and orientation are approximate. No details are guaranteed, they cannot be relied upon for any purpose and they do not form part of any agreement. No liability is taken for any error, omission or misstatement. A party must rely upon its own inspection(s). Powered by [www.focalagent.com](http://www.focalagent.com)

To view this property please contact Connells on

**T 01823 334 433**  
**E [taunton@connells.co.uk](mailto:taunton@connells.co.uk)**

53 High Street  
 TAUNTON TA1 3PR

Property Ref: TTN313197 - 0009

Tenure: Freehold EPC Rating: D

Council Tax Band: B

**view this property online [connells.co.uk/Property/TTN313197](http://connells.co.uk/Property/TTN313197)**



1. MONEY LAUNDERING REGULATIONS Intending purchasers will be asked to produce identification documentation at a later stage and we would ask for your co-operation in order that there will be no delay in agreeing the sale. 2. These particulars do not constitute part or all of an offer or contract. 3. The measurements indicated are supplied for guidance only and as such must be considered incorrect. Potential buyers are advised to recheck measurements before committing to any expense. 4. We have not tested any apparatus, equipment, fixtures, fittings or services and it is in the buyers interest to check the working condition of any appliances.

Connells Residential is registered in England and Wales under company number 1489613, Registered Office is Cumbria House, 16-20 Hockliffe Street, Leighton Buzzard, Bedfordshire, LU7 1GN. VAT Registration Number is 500 2481 05.

see all our properties at [www.connells.co.uk](http://www.connells.co.uk) | [www.rightmove.co.uk](http://www.rightmove.co.uk) | [www.zoopla.co.uk](http://www.zoopla.co.uk)