



St. Aubyns

Hove, BN3 2TL

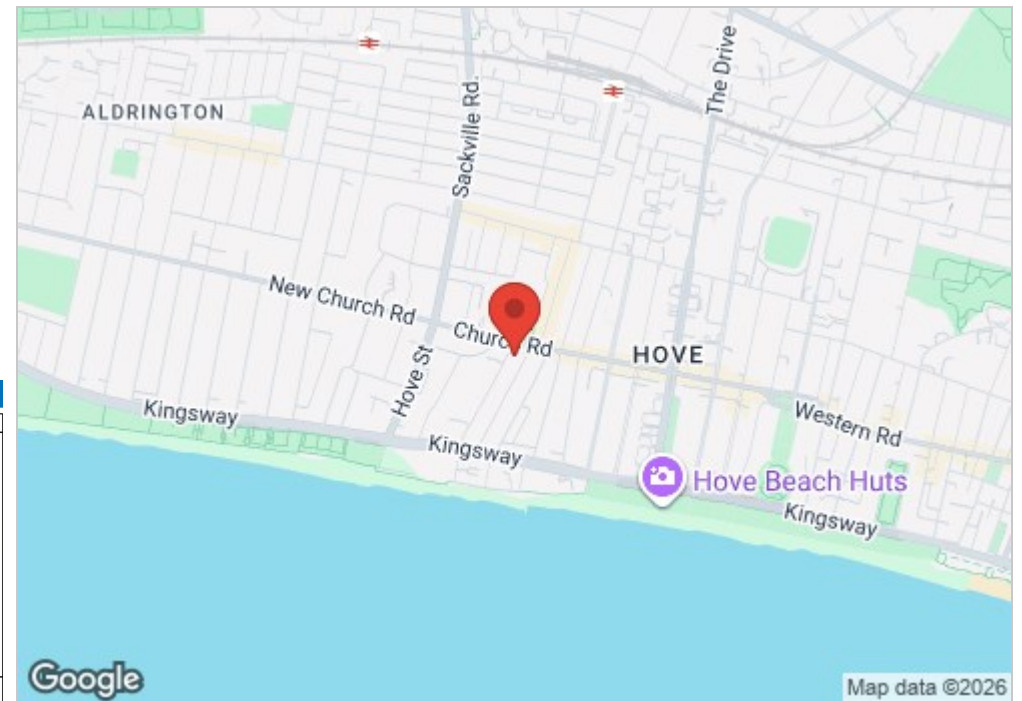
Guide price £850,000

Nestled in the desirable area of St. Aubyns, Hove, this stunning four-bedroom house offers a perfect blend of contemporary architectural features and comfortable living. Spanning over four storeys, the property is presented in immaculate order, making it an ideal choice for families or those seeking a sea side home.

Upon entering, you are greeted by a welcoming reception room that sets the tone for the rest of the house. The well-designed layout includes two modern bathrooms, one of which is an en suite to the principal bedroom, ensuring convenience and privacy for all residents. Each bedroom is generously sized, providing ample space for relaxation and personalisation.

One of the standout features of this property is its private garden, a tranquil oasis perfect for outdoor entertaining or simply enjoying a quiet moment in the fresh air. At the bottom of the road is the beautiful Hove seafront, offering easy access to the beach and the vibrant coastal lifestyle.

This home is not only a sanctuary but also a statement of modern living, making it a rare find in such a sought-after location. With its combination of space, style, and proximity to the seafront, this property is sure to attract those looking for a sophisticated yet comfortable living experience in Hove.

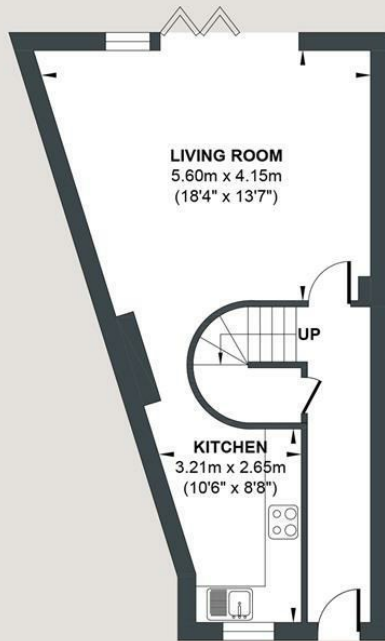


Energy Efficiency Rating		
	Current	Potential
Very energy efficient - lower running costs		
(92 plus) A		
(81-91) B		84
(69-80) C	72	
(55-68) D		
(39-54) E		
(21-38) F		
(1-20) G		
Not energy efficient - higher running costs		
England & Wales		EU Directive 2002/91/EC

- Contemporary Architectural Features
- Walking distance to Hove seafront
- Private East facing garden
- Four Double Bedrooms
- Roof Terrace
- Easy access to Hove Train Station

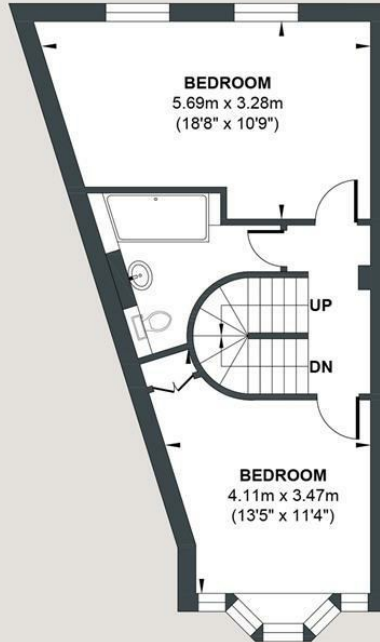
ST AUBYN'S

Approx. Gross Internal Floor Area = 144.7 sq m / 1558.0 sq ft
 Illustration for identification purposes only, measurements are approximate, not to scale.



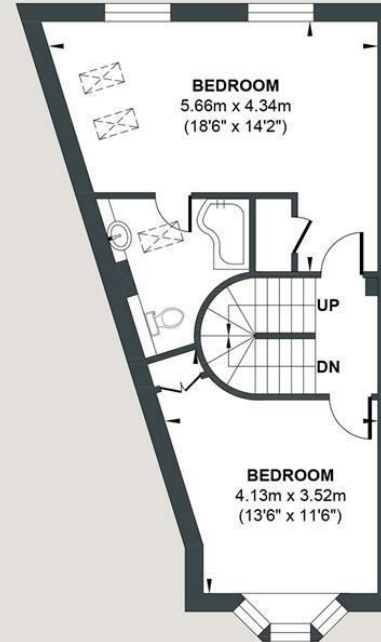
GROUND FLOOR

Approximate Floor Area
460.0 sq ft
(42.7 sq m)



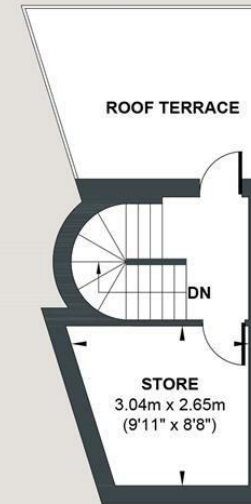
FIRST FLOOR

Approximate Floor Area
463.0 sq ft
(43.0 sq m)



SECOND FLOOR

Approximate Floor Area
463.0 sq ft
(43.0 sq m)



THIRD FLOOR

Approximate Floor Area
172.0 sq ft
(16.0 sq m)



Foster & Co and their clients give notice that:

These sales particulars do not constitute any part of an offer of contract and are for guidance for prospective purchases only and should be not relied upon as a statement of fact.

We are not to be held responsible for material information that has not been given to us by our client at the time of marketing.

All measurements are approximate



