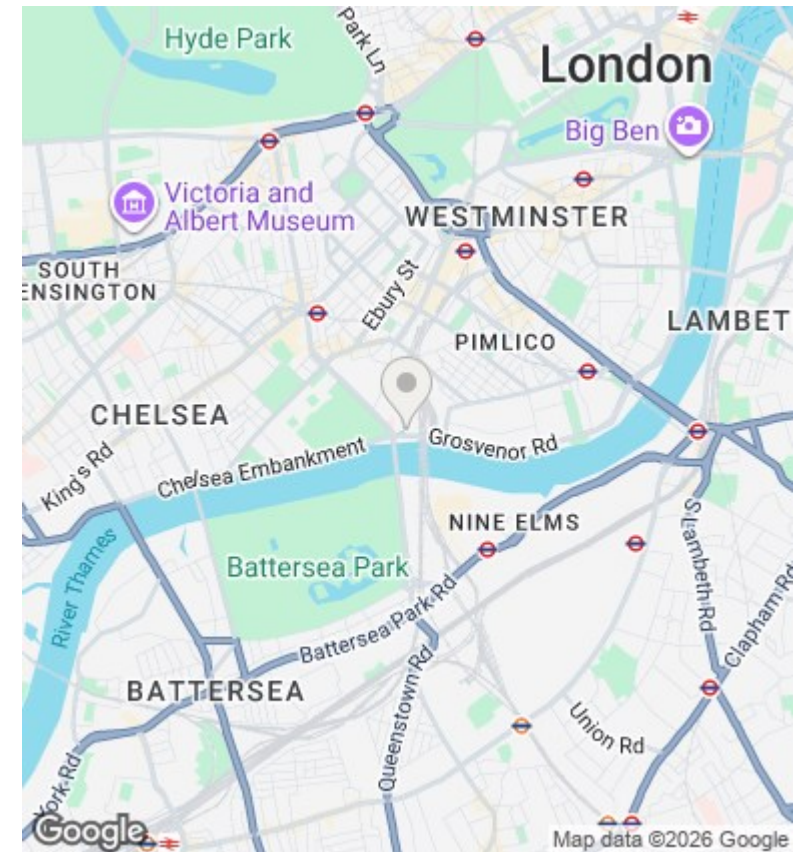
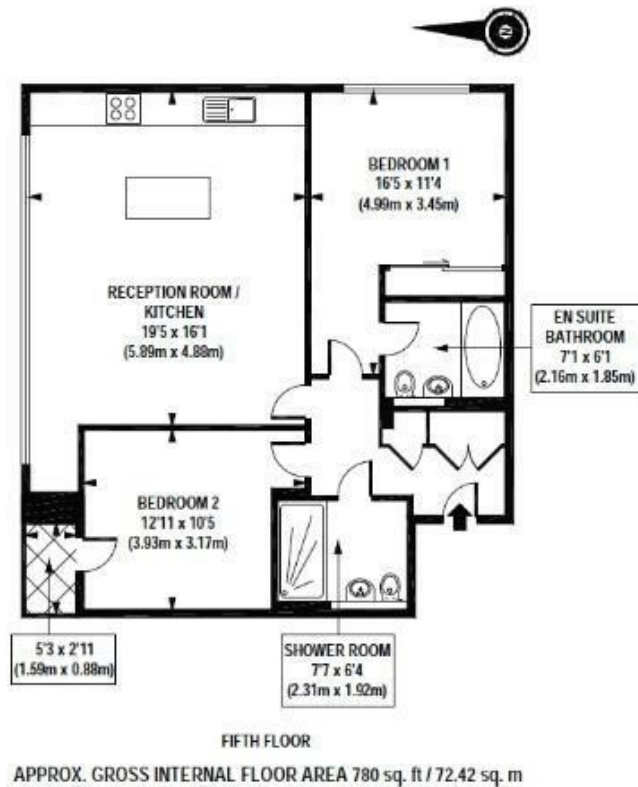




## Cubitt Building, Grosvenor Waterside, Gatliff Road, Sloane Square SW1W 8QL

£980,000

- 24/7 CONCIERGE
- UNDERFLOOR HEATING AND AIR COOLING
- RESIDENCE GYM AND SPA
- WALKING DISTANCE TO VICTORIA AND SLOANE SQUARE STATIONS
- SOLE AGENT
- ALLOCATED PARKING SPACE
- ONSITE FOOD SHOP AND RESTAURANT / COFFE SHOP
- DOCK VIEWS
- WOODEN FLOOR
- MOMENTS AWAY FROM BATTERSEA PARK



## Viewings

Viewings by arrangement only.  
Call 02077225022 to make an appointment.

## Council Tax Band

F

## EPC Rating:

C

Energy Efficiency Rating		
	Current	Potential
<i>Very energy efficient - lower running costs</i>		
(92 plus) <b>A</b>		
(81-91) <b>B</b>		
(69-80) <b>C</b>	77	77
(55-68) <b>D</b>		
(39-54) <b>E</b>		
(21-38) <b>F</b>		
(1-20) <b>G</b>		
<i>Not energy efficient - higher running costs</i>		
<b>England &amp; Wales</b>	EU Directive 2002/91/EC	