



Southwood Grove, Sheffield, S6 1XD

Guide Price £135,000

🛏️ 2 🚿 1 🚗 1



Guide Price of £135,000 - £140,000

Why You'll Love It

Step inside this inviting home and you'll find a well-designed layout offering both space and comfort. The entrance hall leads to a generous living room filled with natural light from the Juliet balcony, creating a welcoming space to relax or entertain. The neutral décor and warm tones make it easy to imagine this as home.

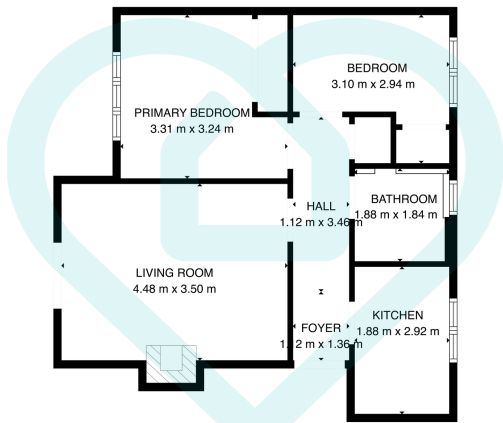
The separate kitchen is neatly fitted with plenty of storage and worktop space, featuring an integrated oven and hob, plus space for appliances. Two double bedrooms provide flexibility for guests, working from home, or family living, with the main bedroom including a built-in wardrobe for extra storage. The bathroom completes the interior, offering a white three-piece suite with a shower over the bath.

Outside, the development offers well-maintained communal grounds and allocated parking, all set within a quiet residential spot close to Hillsborough Park, Middlewood Road shops, and the Supertram network for easy access across Sheffield.

Why We Love Hillsborough

Hillsborough remains one of Sheffield's most popular suburbs for good reason, offering leafy parks, independent cafés, and excellent transport links all within easy reach of the city centre. Southwood Grove benefits from a peaceful position that's just minutes from everyday essentials, making it ideal for modern living.



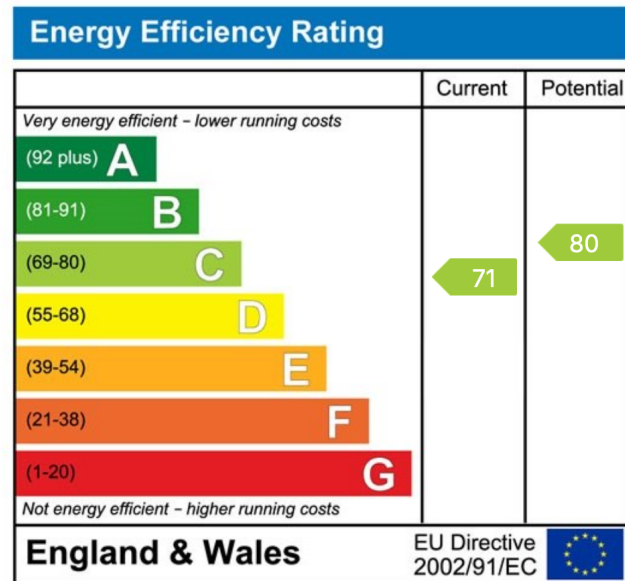


TOTAL: 51 m²
 FLOOR 1: 51 m²
 EXCLUDED AREAS: FIREPLACE: 1 m², WALLS: 4 m²

This floor plan is for illustrative purposes only. All measurements and layouts are approximations and do not necessarily capture the precise specifications of the property. No responsibility is taken for any error, omission, or misstatement. We always recommend viewing in person to confirm the exact floor plan of a property. Made with Metropix.



- Beautifully Presented Two-Bedroom Apartment
- Separate Fitted Kitchen with Integrated Oven and Hob
- Built-In Storage in Main Bedroom
- Allocated Parking Space
- Peaceful Location in a Popular Hillsborough Development
- Bright Lounge with Juliet Balcony
- Two Double Bedrooms
- Modern Three-Piece Bathroom Suite
- Secure Intercom Entry System
- Excellent Access to Local Amenities and Transport Links



Sales | Lettings | New Homes

VAT Reg Number: 191 3588 84
 Company Reg Number: 08610489
 Company Reg Address: 67 Middlewood Road, Hillsborough, Sheffield, S6 4GX.

The MorfittSmith Building
 67 Middlewood Road
 Hillsborough
 Sheffield
 S6 4GX

Get in touch - arrange an appointment



0114 232 1764
 sales@morfittsmith.co.uk
 lettings@morfittsmith.co.uk
 newhomes@morfittsmith.co.uk
 www.morfittsmith.co.uk



@MorfittSmith
 @MorfittSmith
 MorfittSmith
 Estate & Letting Agent