



OVER 60?

Secure this property
for up to **59% less!**

Guide Price

£130,000

**Share of
Freehold**

1x 🏠 1x ↻ 1x 🚗

Ground Floor

**Apartment, Boscombe
Road, Folkestone, Kent,
CT19**

Wards

Helping you move forwards



Main features

- Private outdoor space
- Quiet location
- Near to Folkestone Central
- Ground floor convenience
- Ideal investment or first time buy
- Joint Freehold interest in the property

Accommodation

GROUND FLOOR

Hallway

Lounge: 15'0 x 9'1 (4.58m x 2.77m)

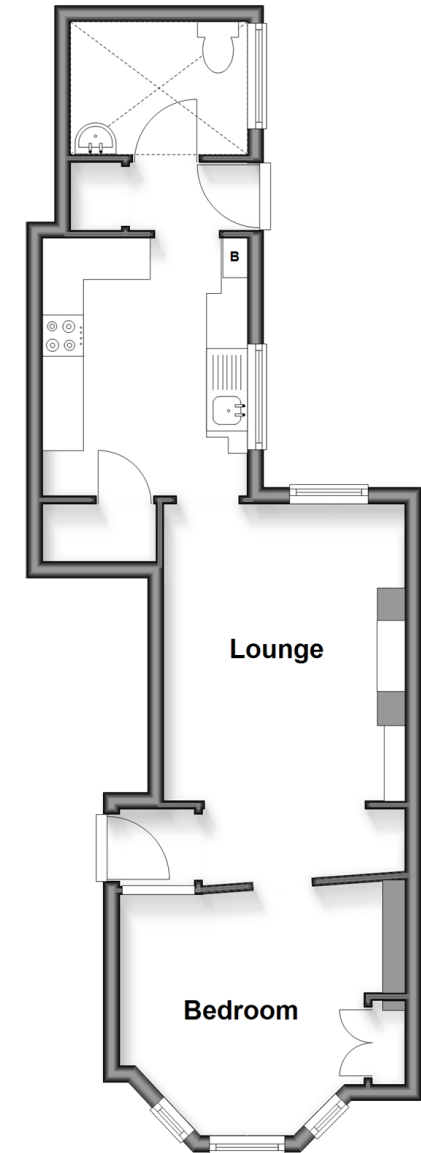
Kitchen: 10'0 x 8'1 (3.05m x 2.47m)

Bedroom: 9'11 x 9'0 (3.02m x 2.75m)

Wet Room

Ground Floor

Approx. 38.3 sq. metres (412.3 sq. feet)



Call Folkestone - 01303 256505 ■ wardsfolkent.co.uk

- If buying to let, the energy rating will need to be improved to at least 'E' rating before you can let the property
- Legal advice should be taken to verify fixtures/fittings, planning, alterations and/or lease details
- Appliances & services are untested, dimensions are approximate and floor plans are not to scale
- Through a Homewise Home For Life Plan people aged 60+ can secure this property for up to 50% less, by purchasing a Lifetime Lease.



12638518/20251129/LS/OJ