



Great Titchfield Street, W1W

£725,000

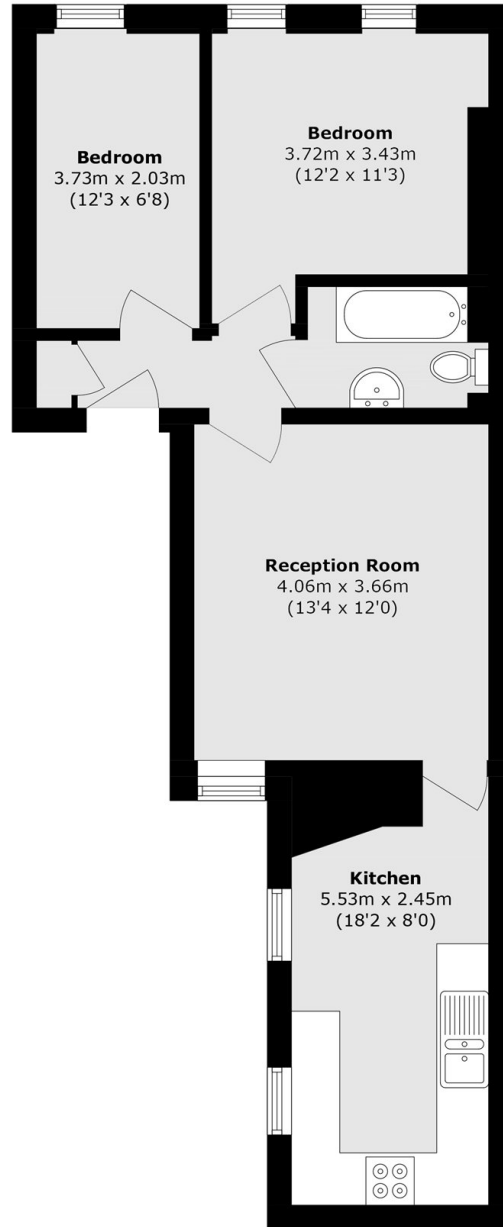
A two double bedroom apartment located on the first floor of a characterful Georgian building. Benefits from a central Fitzrovia location and a long lease with share of freehold. The property has a great ceiling height which adds to a feeling of space and light. Both bedrooms accommodate double beds and there is ample living space with both a reception room and a kitchen - diner.

Great Titchfield Street is known for its independent bars, art galleries, cafés, and boutiques. A short walk from Oxford Circus, Regents Street and Regent's Park.

Features

- Two Double Bedrooms
- Reception
- Kitchen - Dining Room
- Separate Kitchen
- Bathroom
- Share Of Freehold

Great Titchfield Street, London, W1W



Total area (approx.): 56.3 sq. m (606.0 sq. ft)