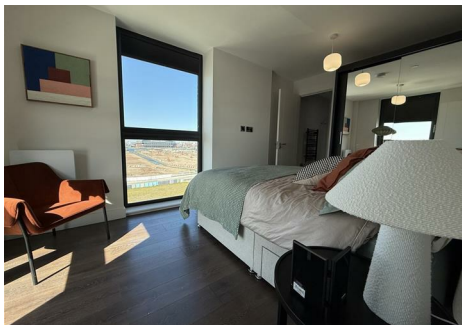




ASPIRE RESIDENTIAL

Service | Expertise | Accountability



Aquitania, Triskelion Way, Liverpool

£1,300 PCM

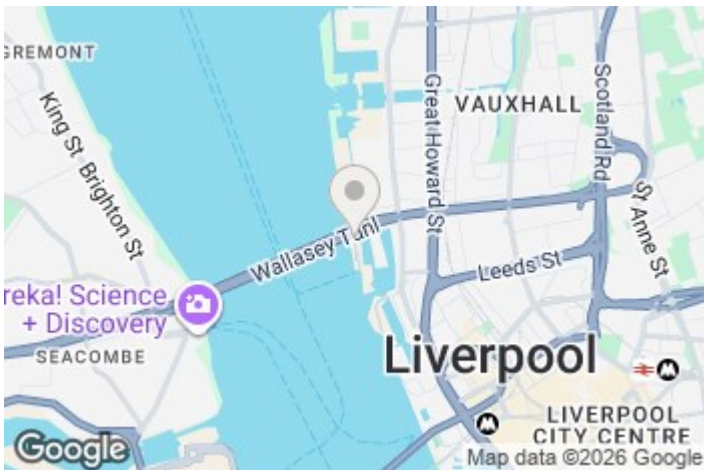


Council Tax Band: New
Build

- * Modern 2-bedroom apartment in sought-after Aquitania development
- * Bright open-plan living/dining area with large windows
- * Two spacious double bedrooms
- * Secure entry system and lift access
- * ONE ALLOCATED PARKING SPACE INCLUDED

- * Prime waterfront location near Liverpool Marina and city centre
- * Contemporary kitchen with integrated appliances
- * Stylish family bathroom with full bath and shower
- * Images are for marketing purposes
- * EPC RATING B





EPC Rating:

Energy Efficiency Rating		Current	Potential
Very energy efficient - lower running costs			
(92 plus)	A		
(81-91)	B		
(69-80)	C		
(55-68)	D		
(39-54)	E		
(21-38)	F		
(1-20)	G		
Not energy efficient - higher running costs			
England & Wales		EU Directive 2002/91/EC	

Aspire Residential | Liverpool

Park Central
11a Jesse Hartley Way
Liverpool
L3 0AY

Telephone: 0151 203 5000

Email: liverpool@aspireresidential.co.uk



Aspire Residential is a trading name of Aspire Residential (North) Limited, a Company Incorporated and Registered in England and Wales with Company Number 12658947 and VAT Number 381231616 and whose registered office address is Park Central, 11a Jesse Hartley Way, Liverpool, L3 0AY.

IMPORTANT NOTICE TO PURCHASERS: We endeavour to make our sales particulars accurate and reliable, however, they do not constitute or form part of an offer or any contract and none is to be relied upon as statements of representation or fact. The services, systems and appliances listed in this specification have not been tested by us and no guarantees as to their operating ability or efficiency are given. All measurements have been taken as a guide to prospective buyers only, and are not precise. If you require clarification or further information on any points, please contact us, especially if you are traveling some distance to view.