



Bedford Road, SW4

£3,600 Per calendar month

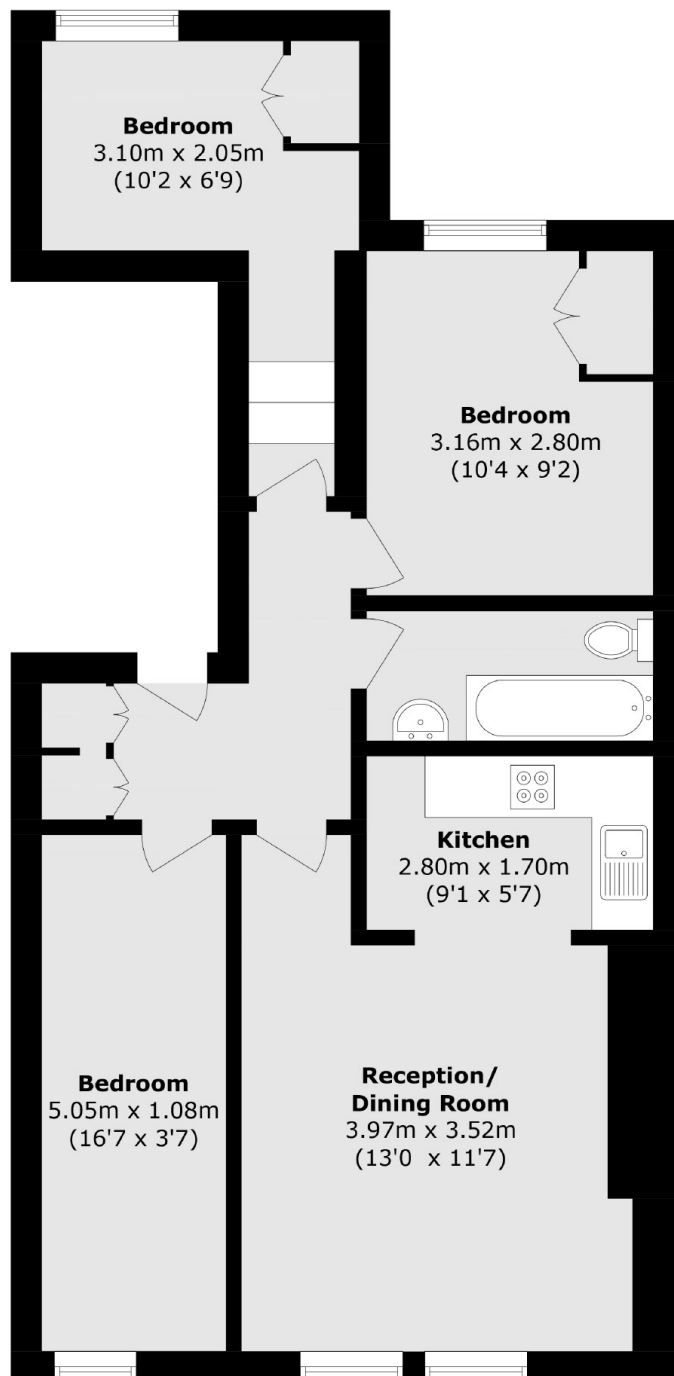
This split-level Victorian conversion offers three large double bedrooms, wooden flooring and neutral interior throughout. Ideal for professional sharers looking to be close to both Clapham High Street's amenities and local transport links.

Less than half a mile to Clapham North underground station and the bustling High Street, Bedford Road's connections make it perfect for young professionals.

Features

- Three Double Bedrooms
- Large Reception Room
- Victorian Conversion
- Neutral Interior
- Modern Bathroom
- Ideal Location

Bedford Road, London, SW4



Total area (approx.): 62 sq. m (667.9 sq. ft)