



Guide Price
£170,000

Leasehold

2x  1x  1x 

**Vale Drive, Chatham,
Kent, ME5**

OVER 60?

Secure this property
for up to **59% less!**

Wards
Helping you move forwards



Main features

- Ground floor maisonette with a driveway
- Private garden access from the side and from the lounge
- Great space and ready to move into
- Ideal for first time buyers or down sizers
- Great location due to proximity to local amenities, good schools and transport links

Accommodation

GROUND FLOOR

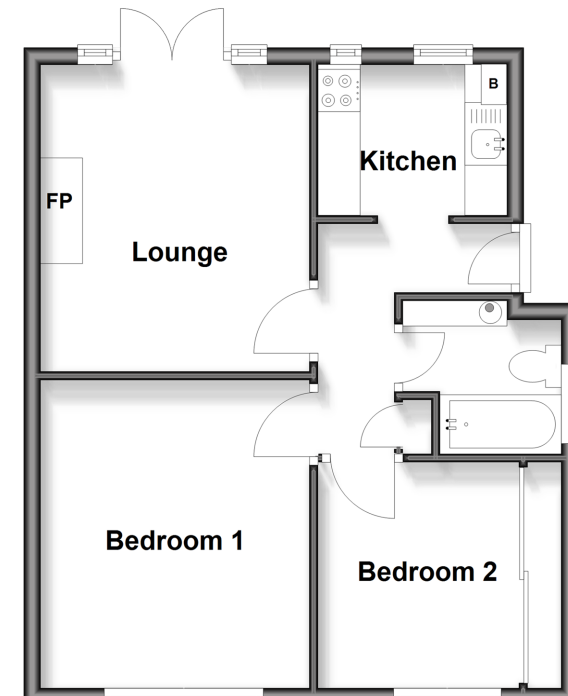
- Hallway
- Lounge: 11'10 x 10'7 (3.61m x 3.23m)
- Kitchen: 7'3 x 5'10 (2.21m x 1.78m)
- Bedroom 1: 9'1 x 7'2 (2.77m x 2.19m)
- Bedroom 2: 12'5 x 10'5 (3.79m x 3.18m)
- Bathroom

OUTSIDE

- Front Garden
- Driveway
- Rear Garden

Ground Floor

Approx. 43.7 sq. metres (470.2 sq. feet)



Call Chatham - 01634 841243 ■ wardsofkent.co.uk

■ Legal advice should be taken to verify fixtures/fittings, planning, alterations and/or lease details
 ■ Through a Homewise Home For Life Plan people aged 60+ can secure this property for up to 59% less, by purchasing a Lifetime Lease

■ Appliances & services are untested, dimensions are approximate and floor plans are not to scale



10435991/20260309/AP/RC