





Occupying a prime seafront position on the ever-popular Hayling Island, this beautifully presented two-bedroom top floor apartment offers breathtaking sea views, a private garden and the rare advantage of no forward chain. Perfectly positioned to enjoy coastal living at its finest, the property is within easy reach of local amenities, the beach and picturesque coastal walks.

The accommodation is bright and spacious throughout, with a generous lounge enjoying elevated views across the coastline, creating the perfect space to relax and unwind. The fitted kitchen provides ample storage and workspace while the apartment benefits from a well-appointed bathroom and excellent natural light throughout.

There are two well-proportioned bedrooms, both offering comfortable accommodation and versatility for guests, home working or family living. The principal bedroom enjoys sea views while the second bedroom provides further flexible accommodation.

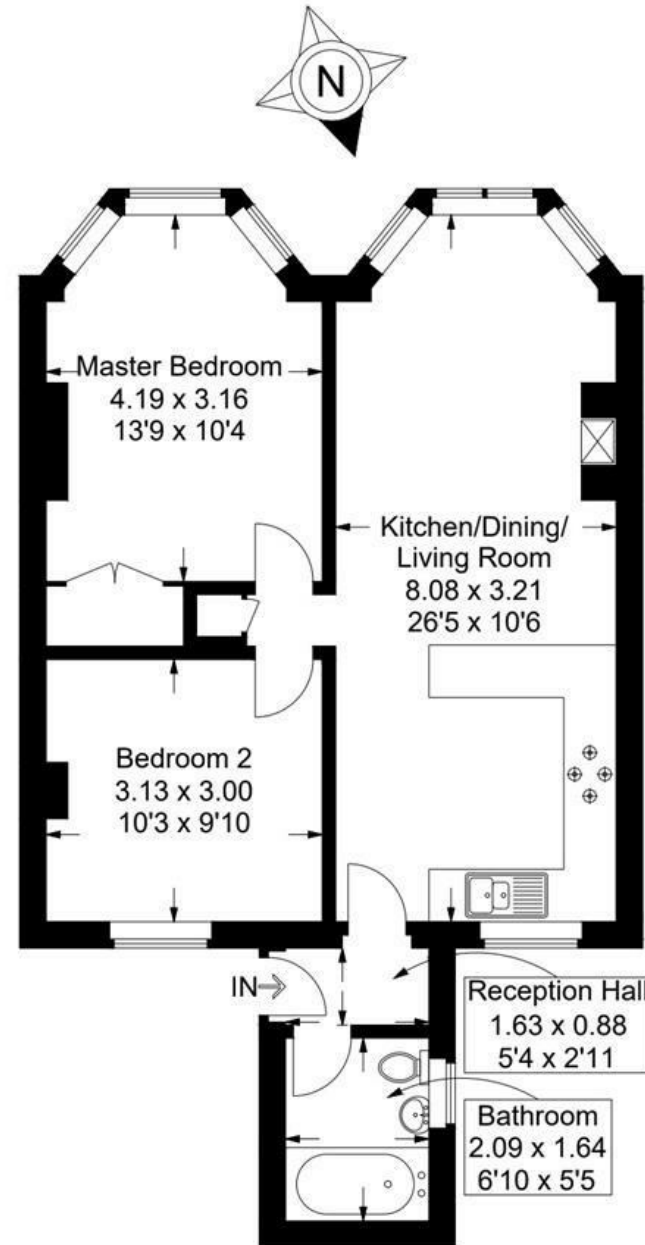
Externally, the property benefits from its own private garden, providing a wonderful outdoor space for entertaining, dining or simply enjoying the coastal surroundings. Offered to the market with no forward chain, this is an excellent opportunity to acquire a sought-after seafront home, holiday retreat or investment property in one of Hayling Island's most desirable locations.

- TWO BEDROOM APARTMENT
- SEA VIEWS
- PRIVATE REAR GARDEN
- TWO DOUBLE BEDROOMS
- BAYS TO LOUNGE AND MASTER BEDROOM
- MODERN KITCHEN SUITE
 - VERSATILE ACCOMODATION
- NO FORWARD CHAIN



Sea Front, Hayling Island

Approximate Gross Internal Area = 56 sq m / 603 sq ft



First Floor

This plan is for layout guidance only. Not drawn to scale unless stated. Windows and door openings are approximate. Whilst every care is taken in the preparation of this plan, please check all dimensions, shapes and compass bearings before making any decisions reliant upon them.