



84 Mizzen Court, Bristol, BS20 7QL  
£1,050 Per Month

GOODMAN  
& LILLEY



THE INDEPENDENT SALES, LETTINGS & LAND AGENTS

## 84 Mizzen Court, Bristol, BS20 7QL

A beautifully presented and highly convenient one-bedroom apartment situated in the sought-after Mizzen Court development, offering stunning marina views and the benefit of allocated parking. This bright and spacious unfurnished apartment features a well-proportioned open-plan living and dining area with direct access to a private balcony, creating the perfect space to relax and enjoy the picturesque waterfront surroundings. The modern kitchen is thoughtfully designed with ample storage and workspace, while the generous double bedroom provides a calm and comfortable retreat. A contemporary bathroom and excellent storage complete the accommodation. Ideally located within walking distance of the marina, local cafés, restaurants, shops, and transport links, this property combines stylish coastal living with everyday convenience. Further benefits include:

Council Tax: C  
EPC: C

Private balcony with marina views

Allocated parking space

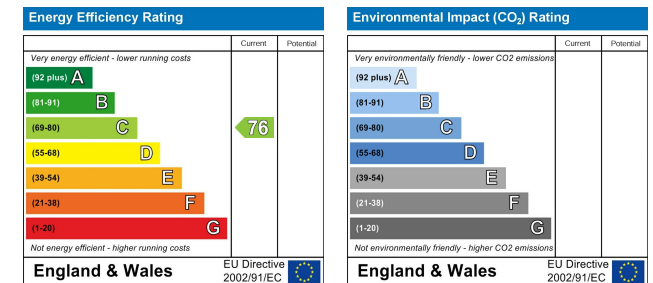
Unfurnished

Sought-after waterfront location

Excellent access to local amenities and commuter routes

This superb apartment would ideally suit a professional individual or couple seeking modern marina-side living in the heart of Portishead.

Holding deposit: £242.30  
Damages deposit: £1211.53



Bristol

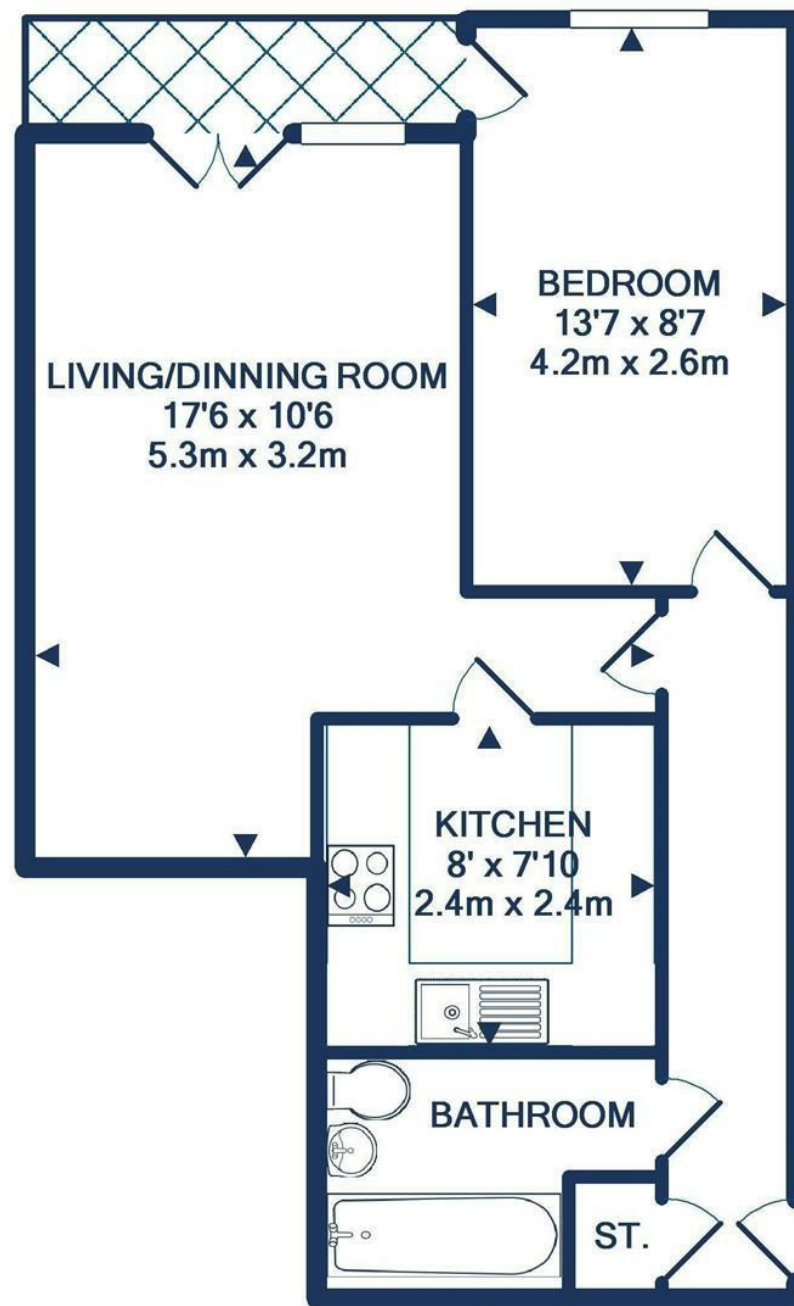
9 High Street, Shirehampton

Bristol BS11 0DT

01172 130333

[www.goodmanlilley.co.uk](http://www.goodmanlilley.co.uk)





These particulars are for general guidance only. They do not form or constitute any part of an offer or contract. Goodman & Lilley has not carried out structural surveys of the property. The services, appliances or specific fittings mentioned in these details have not been tested. Every attempt is made to ensure accuracy, however all photographs, measurements, floor plans and distances are for illustrative purposes only. They must not be relied upon when purchasing carpets and or other fixtures and fittings. Lease details, service charges and ground rents are given as a guide only. They should be checked and confirmed by a licensed solicitor prior to exchange of contracts. The copyright of all details, photographs and floor plans remain exclusive to Goodman & Lilley.