



21 Rugby Close, Market Harborough

Guide Price £230,000 - £250,000

**ANDREW
GRANGER & CO**

Part of

**SHELDON
BOSLEY
KNIGHT** LAND AND
PROPERTY
PROFESSIONALS

21 Rugby Close

Market Harborough, Market Harborough

Council Tax band: B

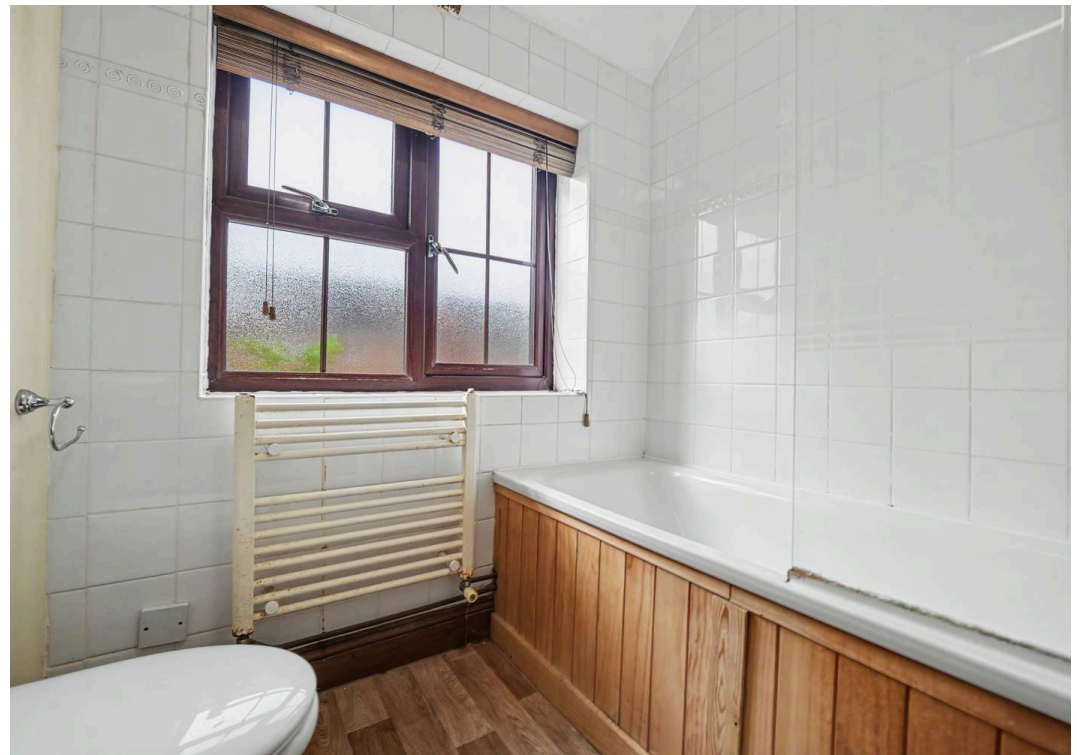
Tenure: Freehold

EPC Energy Efficiency Rating: C

EPC Environmental Impact Rating:

- GUIDE PRICE £230,000 to £250,000
- 2 Bedroom cottage style, end of terrace home
- Close to Welland Park and countryside walks
- Low maintenance gardens to front and rear
- Driveway for 2 vehicles
- Open plan kitchen dining room with French doors to garden
- Country-style kitchen with oven and hob
- Bathroom with bath and shower over
- Council Tax Band B







Andrew Granger & Co (Part of Sheldon Bosley Knight)

Sheldon Bosley Knight, 52 High Street, Market Harborough - LE16 7AF

01858431315 · mkt.harboroughsales@sheldonbosleyknight.co.uk · www.sheldonbosleyknight.co.uk/

DISCLAIMER

All fixtures and fittings mentioned in these particulars are included in the sale, all others in the property are specifically excluded.

Photographs are reproduced for general information and it must not be inferred that any item is included for sale with the property.

These particulars are thought to be materially correct. Their accuracy is not guaranteed and they do not form part of any contract.