

oakheart



£170,000

Guide Price

Steed Crescent, Colchester

Guide Price: £170,000 – £180,000

Set on the top floor within the ever-popular New Town area of Colchester, this stylish and spacious two-bedroom, two-bathroom apartment offers bright, modern living just moments from the City Centre and Colchester Town Station, with direct links to London Liverpool Street—perfect for commuters and professionals alike.

Beautifully presented throughout, the accommodation begins with a welcoming entrance hall, complete with a handy storage

cupboard. There are two generous double bedrooms, including an impressive principal suite with built-in storage and a sleek en-suite shower room, creating a comfortable and private retreat. A contemporary family bathroom serves the second bedroom and guests alike.

The standout feature of the home is the light-filled open plan kitchen, dining and living area. Enhanced by an attractive bay window, this space is flooded with natural light and offers the perfect setting for both relaxing and entertaining. The kitchen is

well-appointed with ample worktop and storage space, combining practicality with modern style.

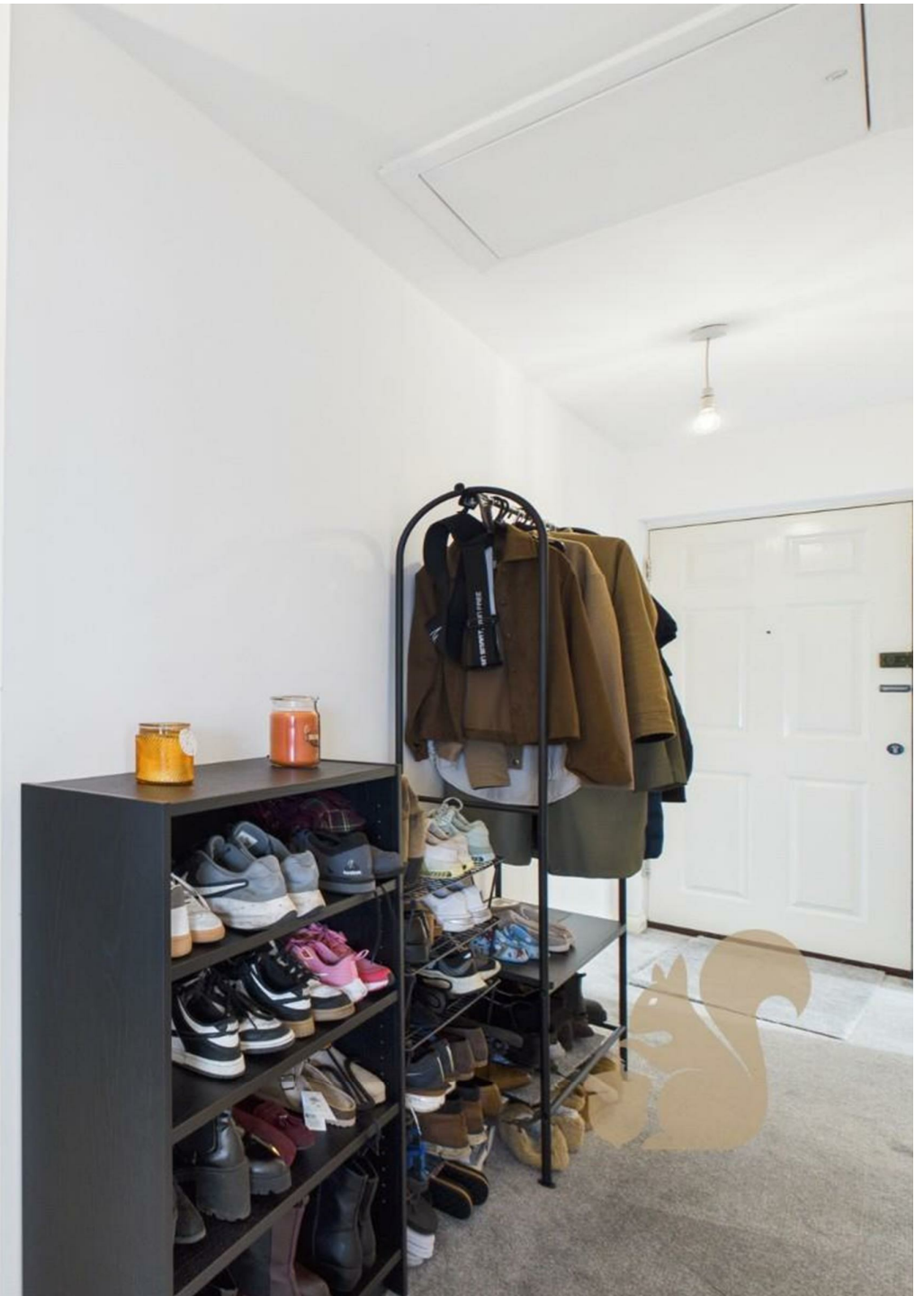
Externally, the property also benefits from an allocated parking space, adding further convenience.

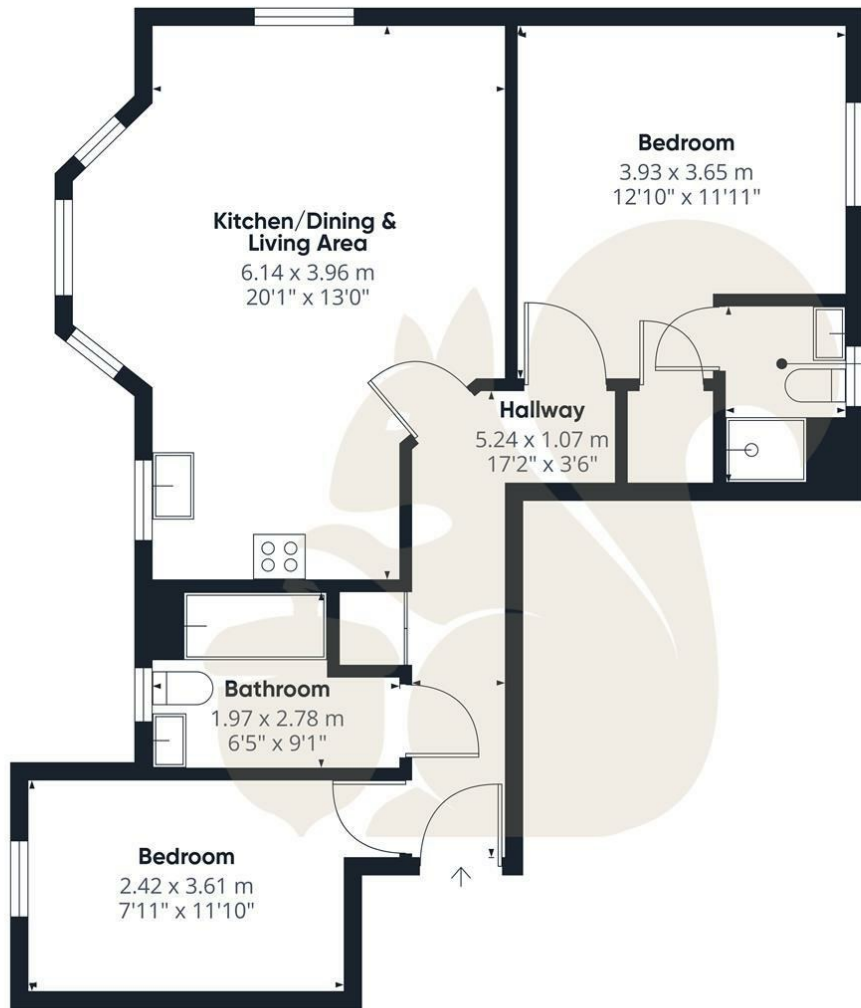
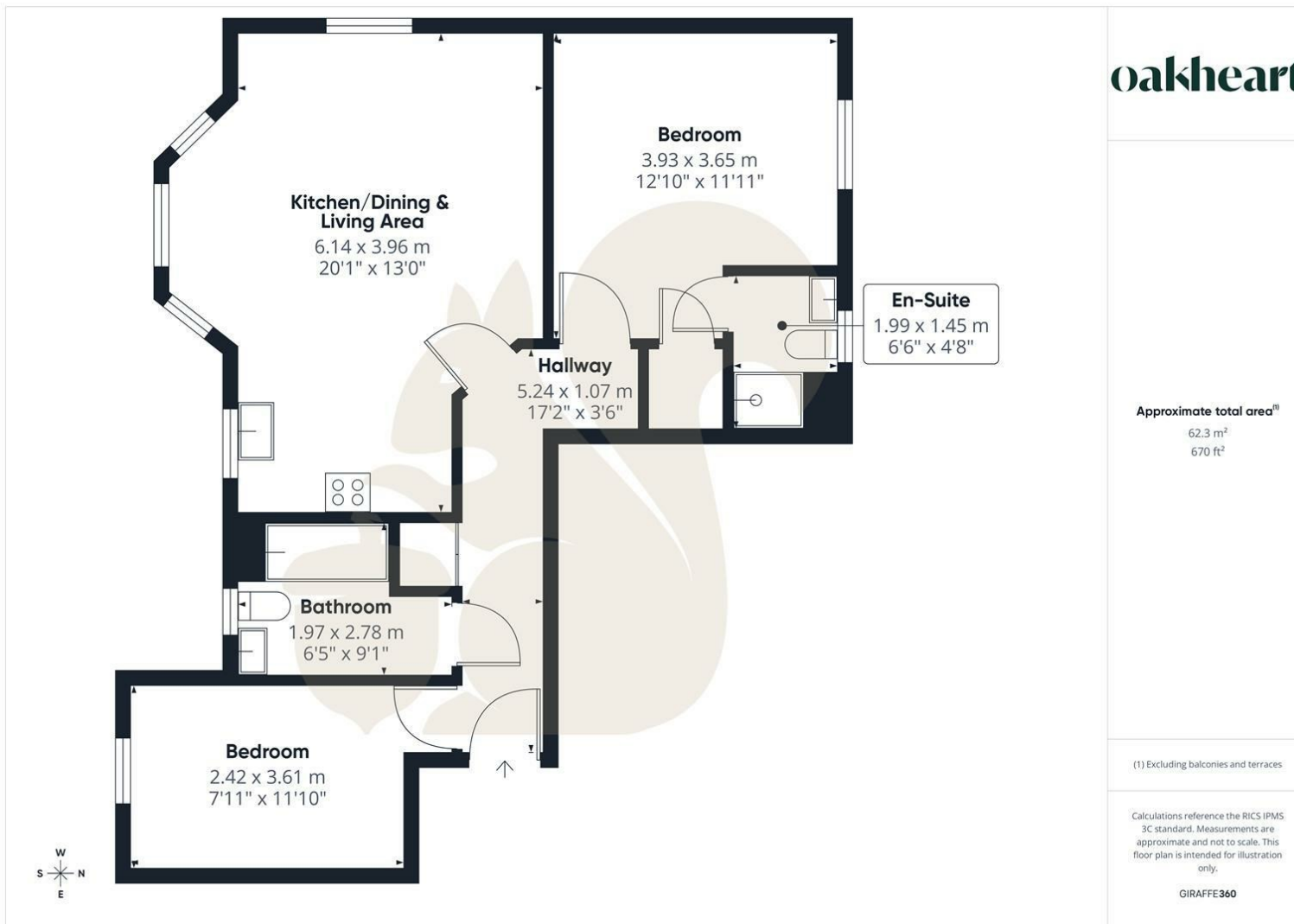
Offering a fantastic blend of space, location and low-maintenance living, this apartment is an excellent opportunity for first-time buyers, investors or anyone seeking a well-connected home in a desirable part of Colchester.











Oakheart Colchester  
01206 803 308  
colchester@oakheart.co.uk  
2b Cotman Road, Colchester, Essex, CO3 4QJ

**oakheart**