

  
Coultons  
FOR SALE  
0 8090 0860  
www.coultons.co.uk



Gunners Grove, Chingford, E4 9SS

£575,000

 Coultons

## PROPERTY SUMMARY

Offering for sale this well-proportioned three-bedroom chalet bungalow, ideally situated on a quiet and highly sought-after residential turning in the heart of Chingford.

The ground floor accommodation comprises two generous bedrooms, a spacious living room, a fitted kitchen/diner opening into a bright conservatory, a shower room, and a separate WC. The first floor features an impressive principal bedroom with the added benefits of an en-suite shower room and a walk-in wardrobe.

Further advantages include double glazing, gas central heating, a low-maintenance paved rear garden, an attached garage, and off-street parking.

Gunners Grove is conveniently located between the shopping amenities of Chingford Mount and the vibrant Station Road High Street in North Chingford. Both areas offer an excellent selection of bars, cafés, restaurants, and independent shops, catering to a variety of tastes and lifestyles. The property is also within easy reach of Ridgeway Park and the extensive green open spaces of Epping Forest, ideal for walking, running, and cycling enthusiasts.

Families will appreciate the choice of well-regarded local schools, including Parkside Primary School, Lime Academy Larkwood, Chingford Foundation School, and Chase Lane Primary School.

Excellent transport connections are available via local bus routes and Chingford Overground Station, providing direct services to London Liverpool Street. Walthamstow Central is also easily accessible, offering convenient interchange with the Victoria Line.

Being offered to the market chain free, this property would make an ideal family home. Early viewing is highly recommended.

3



2



1



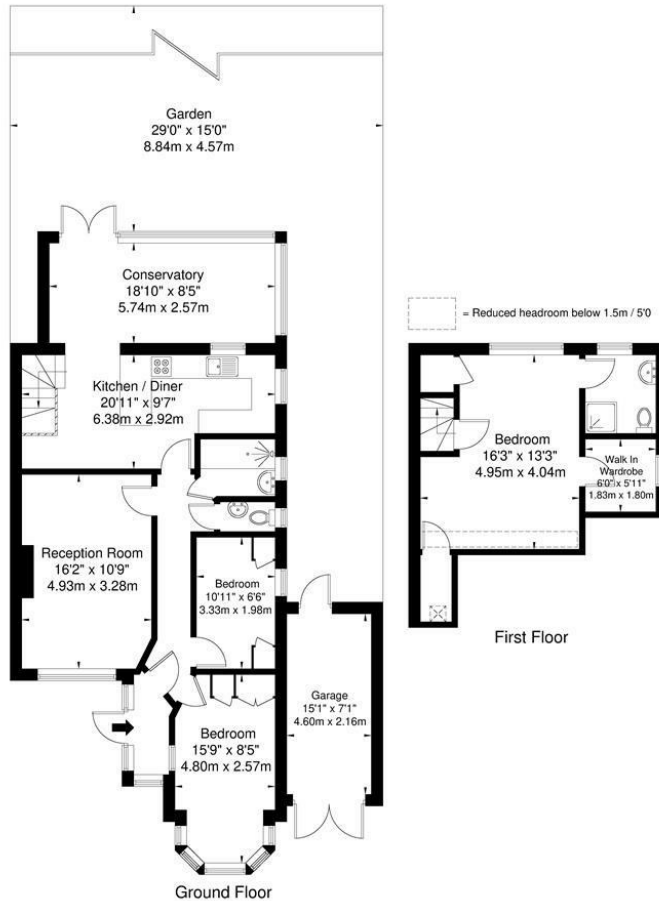






## Gunners Grove, E4 9SS

Approximate Gross Internal Area = 111.7 sq m / 1202 sq ft  
 Garage = 9.9 sq m / 106 sq ft  
 Total = 121.6 sq m / 1308 sq ft



For Illustration Purposes Only - Not To Scale

This floor plan should be used as a general outline for guidance only and does not constitute in whole or in part an offer or contract. Any intending purchaser or lessee should satisfy themselves by inspection, enquiries and full survey as to the correctness of each statement. Any areas, measurements or distances quoted are approximate and should not be used to value a property or be the basis of any sale or let.

**LOCAL AUTHORITY**  
 Waltham Forest

**TENURE**  
 Freehold

**COUNCIL TAX BAND**  
 E

**VIEWINGS**  
 By prior appointment only

Energy Efficiency Rating		
	Current	Potential
<i>Very energy efficient - lower running costs</i>		
(92 plus) <b>A</b>		
(81-91) <b>B</b>		
(69-80) <b>C</b>		
(55-68) <b>D</b>		
(39-54) <b>E</b>	<b>57</b>	<b>70</b>
(21-38) <b>F</b>		
(1-20) <b>G</b>		
<i>Not energy efficient - higher running costs</i>		
<b>England &amp; Wales</b>	EU Directive 2002/91/EC	

Agents Note: Whilst every care has been taken to prepare these particulars, they are for guidance purposes only. All measurements are approximate and are for general guidance purposes only and whilst every care has been taken to ensure their accuracy, they should not be relied upon and potential buyers/tenants are advised to recheck the measurements



**OFFICE ADDRESS**

26 Station Road  
 North Chingford  
 London  
 E4 7BE

020 8090 0860  
[sales@coultons.co.uk](mailto:sales@coultons.co.uk)  
[www.coultons.co.uk](http://www.coultons.co.uk)

**OFFICE ADDRESS**

425a Lordship Lane  
 Wood Green  
 London  
 N22 5DH

020 3869 8989  
[sales@coultons.co.uk](mailto:sales@coultons.co.uk)  
[www.coultons.co.uk](http://www.coultons.co.uk)