






WARWICK CHAMBERS LONDON W8
£3,250 PER MONTH AVAILABLE 12/02/2026

Hamptons
THE HOME EXPERTS

{ THE PARTICULARS

Warwick Chambers London W8

£3,250 Per Month
Unfurnished

 2 Bedrooms
 2 Bathrooms
 1 Reception

Features

- Two Bedrooms, - Two Bathrooms, -
Modern Kitchen, - Communal Garden, -
Unfurnished, - Excellent location

Council Tax

Council Tax Band F

Hamptons
8 Hornton Street
Kensington, London, W8 4NW
020 7937 9372
KensingtonLettings@hamptons.co.uk
www.hamptons.co.uk

{ A BEAUTIFULLY PRESENTED TWO BED APARTMENT WITH COMMUNAL GARDEN

The Property

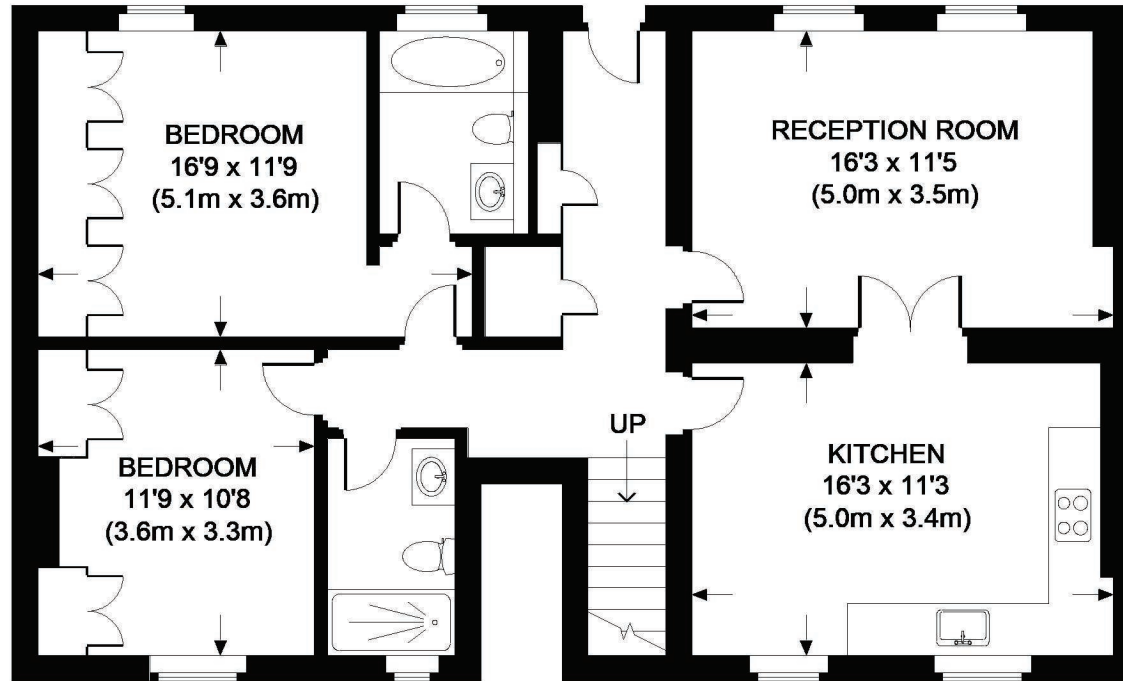
A beautifully presented two bedroom two bathroom apartment set on the lower ground floor of this mansion block in Kensington. The apartment comprises modern eat-in kitchen, good size reception room, principal bedroom with en-suite bathroom, second bedroom and family bathroom. There is access to a pretty communal garden and the apartment is offered unfurnished.

Location

Warwick Chambers is located moments from the amenities and transport links of Kensington High Street (Circle & District lines).



WARWICK CHAMBERS



LOWER GROUND FLOOR

GROUND FLOOR

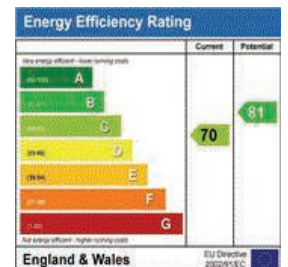
APPROXIMATE GROSS INTERNAL AREA =
 LOWER GROUND FLOOR = 957 SQ. FT. (88.9 SQ. M.)
 GROUND FLOOR = 27 SQ. FT. (2.5 SQ. M.)
 TOTAL = 984 SQ. FT. (91.4 SQ. M.)

This plan is for layout guidance only. Not drawn to scale unless stated. Windows & door openings are approximate. Whilst every care is taken in the preparation of this plan, please check all dimensions, shapes & compass bearings before making any decisions reliant upon them. Please be advised that Hamptons International / our agents have not seen or reviewed any building regulations or planning permission in relation to works carried out to the property.

For Clarification

We wish to inform prospective tenants that we have prepared these particulars as a general guide and they have been confirmed as accurate by the landlord. We have not verified permissions, nor carried out a survey, tested the services, appliances and specific fittings. Room sizes are approximate and measurement figures rounded: they are taken between internal wall surfaces and therefore include cupboards/shelves, etc. Accordingly, they should not be relied upon for

carpets and furnishings. It should also be noted that all fixtures and fittings, carpeted, curtains/blinds, kitchen equipment and garden statuary, whether fitted or not, are deemed removable by the landlord unless specifically itemised with these particulars. Please enquire in office or on our website for details on holding deposit and tenancy deposit figures.





Awaiting Photograph