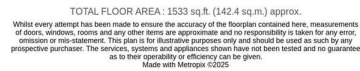
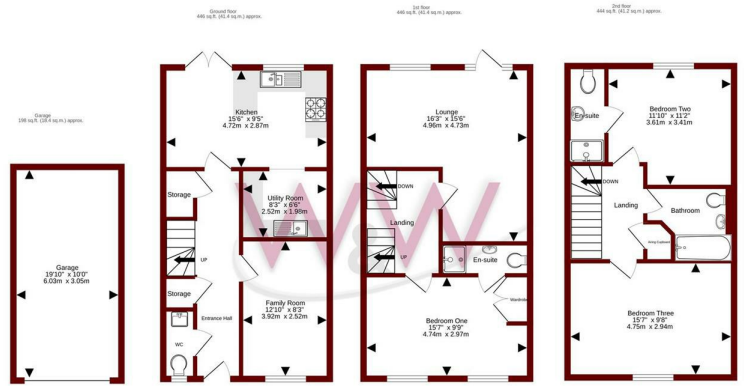





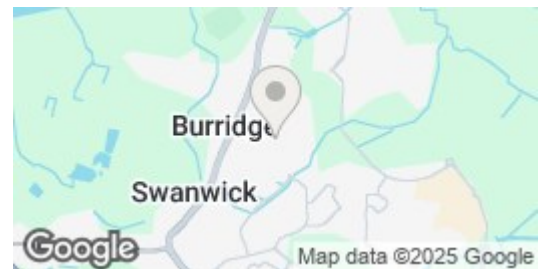
Jerome Street | | Whiteley | PO15 7NJ

**£1,650 Per Month**





Energy Efficiency Rating		Current	Potential
<p><i>Very energy efficient - lower running costs</i></p> <p>(92 plus) <b>A</b></p> <p>(81-91) <b>B</b></p> <p>(69-80) <b>C</b></p> <p>(55-68) <b>D</b></p> <p>(39-54) <b>E</b></p> <p>(21-38) <b>F</b></p> <p>(1-20) <b>G</b></p> <p><i>Not energy efficient - higher running costs</i></p>		79	85
<p><b>England &amp; Wales</b></p>		<p>EU Directive 2002/91/EC</p>	



W&W are pleased to offer for rent this three double bedroom town house. The property enjoys three bedrooms, two en-suites, kitchen/dining room, utility room, family room, downstairs cloakroom, L shaped lounge & main bathroom. The property also benefits from a rear landscaped garden & garage.

## Key features



H3 Whiteley Shopping Centre  
Whiteley Way  
Whiteley  
Hants  
PO15 7PD  
01489 580800  
pm@walkerwaterer.co.uk  
www.walkerwaterer.co.uk