



186a Down Hall Road, Rayleigh
Rayleigh

Guide Price **£585,000**



186a Down Hall Road

Rayleigh, Rayleigh

Stunning 4-bed detached house in Rayleigh with spacious living areas, en-suite to master bedroom, bespoke fitted kitchen, conservatory, and office in garden, Solar panels with solar boosting hot water system, Close to schools, shops, and transport links. Ideal family home offering the perfect blend of modern living and convenience.

Council Tax band: F

Tenure: Freehold

EPC Energy Efficiency Rating: A

EPC Environmental Impact Rating:

186a Down Hall Road

Rayleigh, Rayleigh

Stunning 4-bed detached house in Rayleigh with spacious living areas, en-suite to master bedroom, bespoke fitted kitchen, conservatory, and office in garden, Solar panels with solar boosting hot water system, Close to schools, shops, and transport links. Ideal family home offering the perfect blend of modern living and convenience.

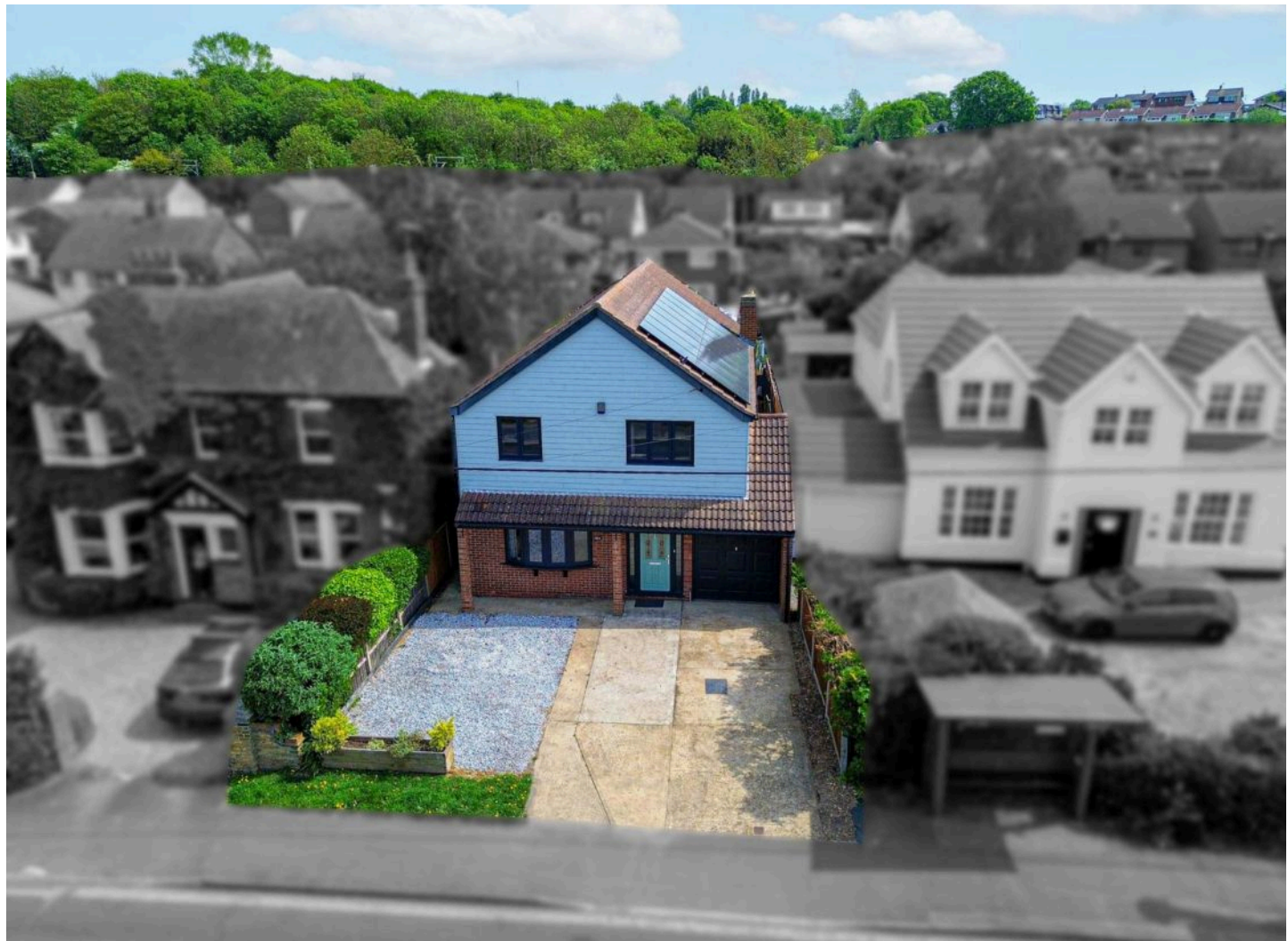
Council Tax band: F

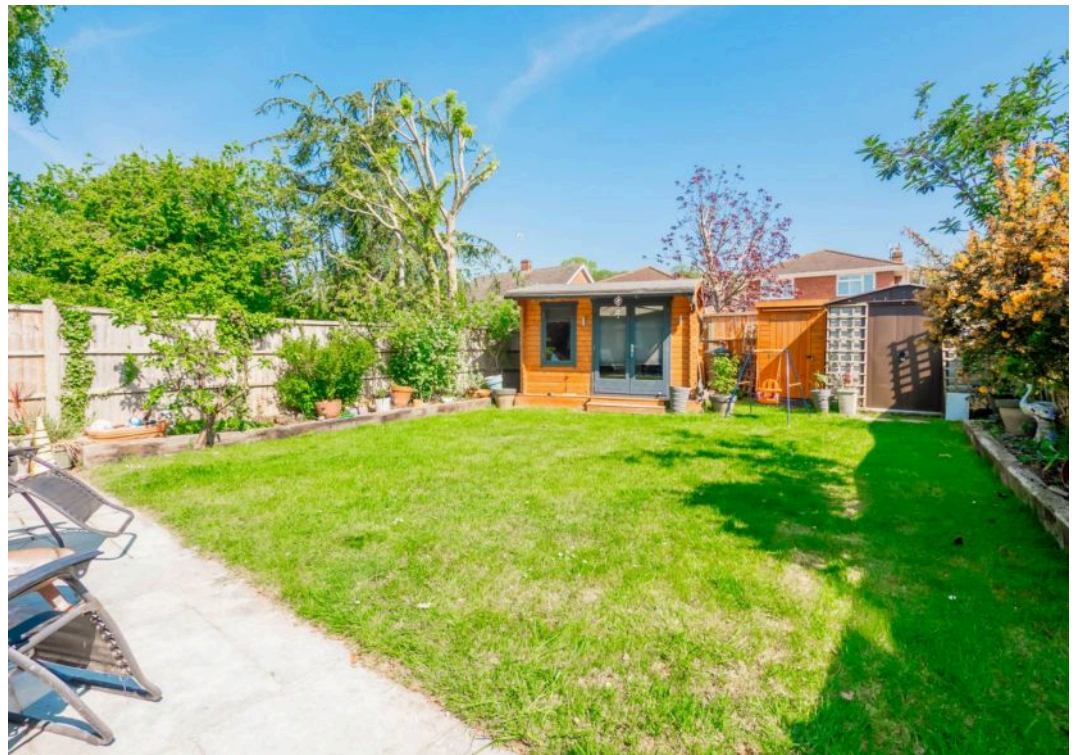
Tenure: Freehold

EPC Energy Efficiency Rating: A

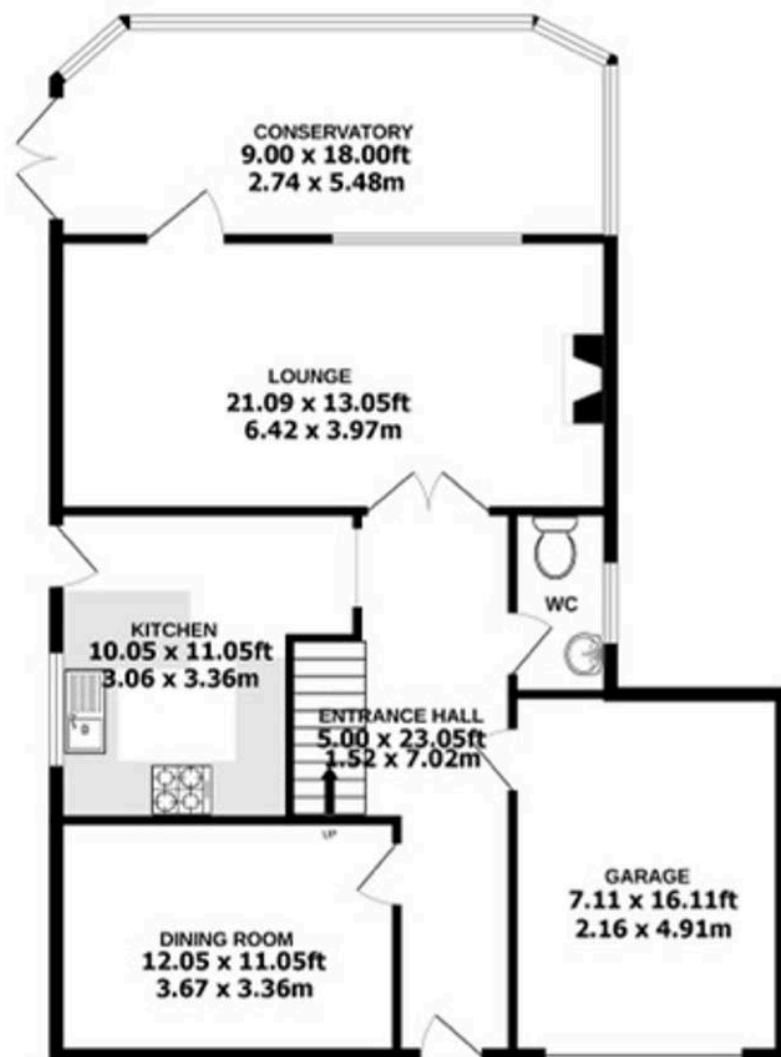
EPC Environmental Impact Rating:

- Guide Price £585,000 – £600,000
- Four Bedroom detached family house with an integral garage
- Three Good sized Reception Rooms
- Beautiful Conservatory
- Impressive bespoke fitted kitchen
- Ground floor cloakroom & First floor family Bathroom
- Excellent sized En-Suite to Bedroom One
- Summer House/Home Office
- Situated close to Rayleigh town centre and walking distance to mainline train station to London Liverpool Street.
- Walking distance to Sweyne park secondary school and Glebe primary

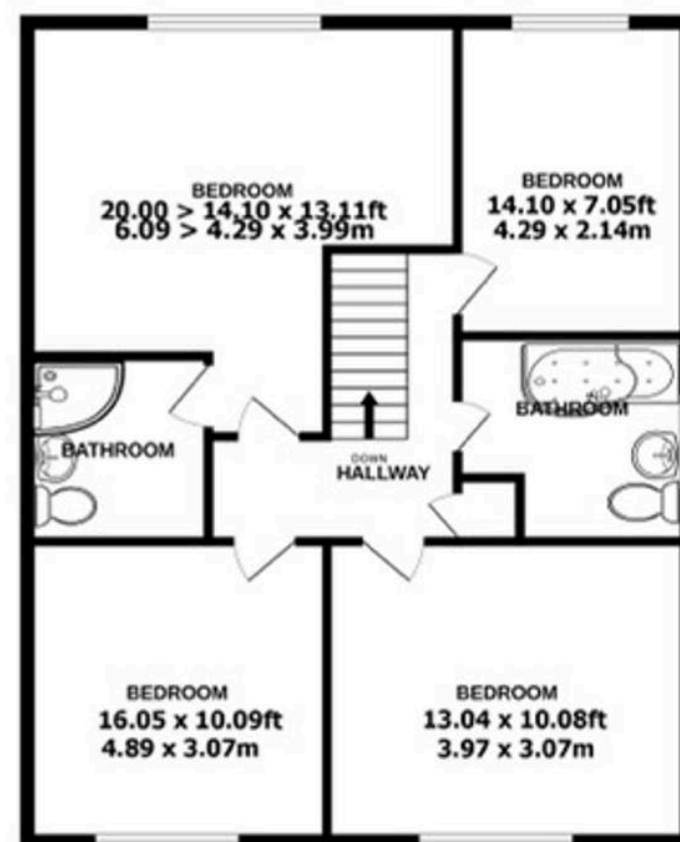




GROUND FLOOR



1ST FLOOR





You can include any text here. The text can be modified upon generating your brochure.

