

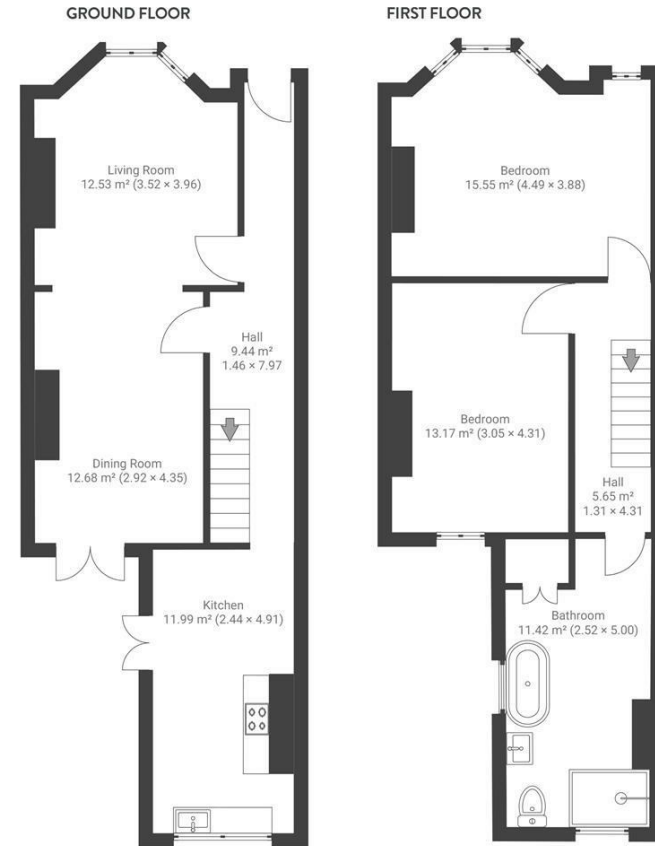
Boardwalk

Raymend Road

, BRISTOL

Raymend Road VICTORIA PARK

APPROXIMATE FLOOR AREA
97 SQM / 1044 SQFT



Boardwalk

Raymend Road , BRISTOL



£465,000



2 Bedrooms



BS3 4QP



1 Bathrooms

"We love laying in our hammocks in the garden, watching the plants change and grow. We love the fact you can see Victoria Park from the house. The street is incredibly friendly and kind - there is always someone to borrow power tools from. We got hope painted on the house to brighten up people's days so people call it 'Hope House' and always remark on how lovely it is."

