



4 Bedrooms | 2 Bathrooms | 2 Reception Rooms

Town End | Caterham | CR3 5UG

Guide price £675,000

LOFT

Town End | Caterham | CR3 5UG
Guide price £675,000

- Immaculately presented detached home
- Driveway and garage to the side
- Beautifully landscaped garden
- Contemporary open-plan kitchen with high quality integrated appliances
- Bi-fold doors flood to space with light
- Convenient utility room and separate lounge
- Two bathrooms with an en-suite to primary bedroom
- Three great-size bedrooms to the first floor
- Ideally situated for amenities with shops on the road and bus links close by



Contemporary feel and design with high quality finishing throughout. Everything you could ask for, ready to move into...the perfect family home.



Ground Floor

Porch

Hallway

Downstairs WC

Reception Room

15'5 x 11'8 (4.70m x 3.56m)

Kitchen

19'5 x 9'3 (5.92m x 2.82m)

Dining Room

12'5 x 9'1 (3.78m x 2.77m)

Utility

9'1 x 6'7 (2.77m x 2.01m)

First Floor

Landing

Bedroom

13'2 x 12'0 (4.01m x 3.66m)

En-suite

Bedroom

12'1 x 8'4 (3.68m x 2.54m)

Bedroom

11'9 x 8'9 (3.58m x 2.67m)

Bedroom

9'0 x 7'3 (2.74m x 2.21m)

Bathroom

Outside

Driveway

Rear Garden

44'6 x 26'4 (13.56m x 8.03m)

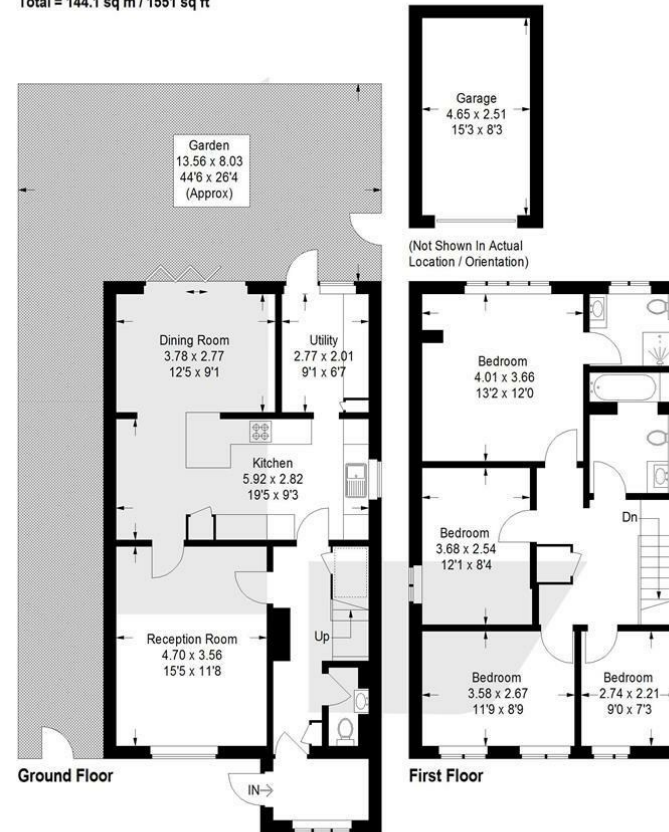
Garage

15'3 x 8'3 (4.65m x 2.51m)



Town End, CR3

Approximate Gross Internal Area
 132.0 sq m / 1421 sq ft
 Garage = 12.1 sq m / 130 sq ft
 Total = 144.1 sq m / 1551 sq ft



This plan is for layout guidance only. Not drawn to scale unless stated. Windows and door openings are approximate. Whilst every care is taken in the preparation of this plan, please check all dimensions, shapes and compass bearings before making any decisions reliant upon them. (ID1302132)

EPC Rating: C

23a High Street
 Purley
 Surrey
 CR8 2AF
 0208 660 8070
 hello@loft-estates.co.uk