



Olive

ESTATE AGENTS



34 Saxondale Avenue, Burnham-On-Sea, TA8 2PS £300,000

*** GENEROUS, EXTENDED FAMILY-SIZE BUNGALOW *** TWO / THREE DOUBLE BEDROOMS *** TWO / THREE RECEPTIONS *** ANNEXE AREA OR SPACE FOR A DEPENDENT RELATIVE *** CONSERVATORY / ADDITIONAL RECEPTION ROOM *** KITCHEN *** FAMILY BATHROOM *** CAR PORT AND AMPLE OFF STREET PARKING *** LARGE REAR GARDEN *** CLOSE TO THE BEACH ** LOCAL CO-OP A MINUTES DRIVE AWAY *** NO ONWARD CHAIN *** EPC RATING BAND D - EXPIRES 2031 *** COUNCIL TAX BAND C *** FREEHOLD ***

Entrance Hall



Dining Room



Lounge



Kitchen



Sun Room



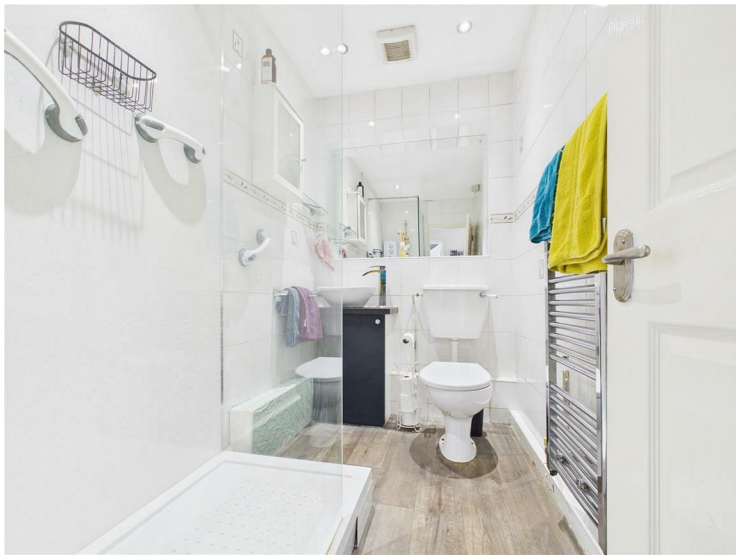
Bedroom One



Bedroom Two



Family Bathroom



Rear Garden



To The Front of The Property





Approximate total area⁽¹⁾
730 ft²

(1) Excluding balconies and terraces

Calculations reference the RICS IPMS 3C standard. Measurements are approximate and not to scale. This floor plan is intended for illustration only.

GIRAFFE360

