

Kensington Park Road, W11

£1,800,000

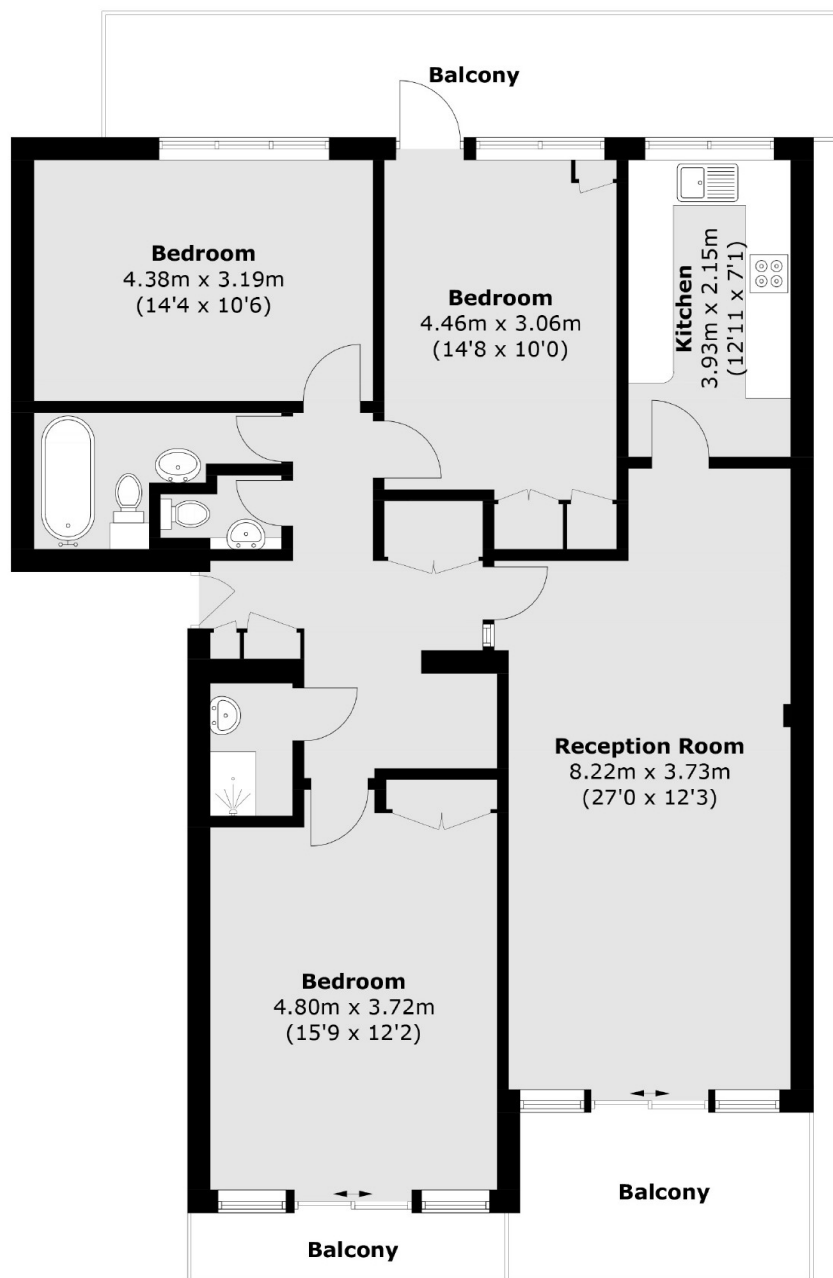
A three double bedroom apartment, with three balconies on the raised ground floor of a secure, modern building. With a separate kitchen and a large spacious reception room, two bathrooms and a private parking space, this is an ideal property for anyone looking for a prime location.

Kensington Park Road is a residential tree lined road in the heart of Notting Hill, within short walking distance of the boutiques and restaurants on Westbourne Grove, the transport links on Notting Hill Gate and the green spaces of Hyde Park and Holland Park.

Features

- Three Bedrooms
- Three Balcony's
- Two Bathrooms
- Private Parking Space
- Separate Kitchen
- Wooden Floors

Kensington Park Road, London, W11



Ground Floor

Total area (approx.): 112.1 sq. m (1,206.6 sq. ft)
Balcony: 27.9 sq. m (300.3 sq. ft)