



29, Rib Vale, Bengoe
SG14 3LE
£865,000



stevenoates.com



29 Rib Vale, Bengeo, Herts, SG14 3LE

A rare opportunity to acquire a beautifully presented four-bedroom detached family home, ideally located in the sought-after area of Lower Bengeo. Thoughtfully modernised by the current owners, the property offers 1,532 sq ft of well-arranged accommodation set over two floors. The ground floor features a welcoming entrance hallway with a utility cupboard, a versatile family room, a bright living room seamlessly open to the contemporary kitchen/dining area, a garden room, a separate utility room, and a convenient guest cloakroom. Upstairs, there are four generously sized bedrooms and a stylish modern family bathroom. Externally, the home benefits from off-street parking for two vehicles, while the landscaped South-West facing rear garden provides a private and sunny outdoor retreat.

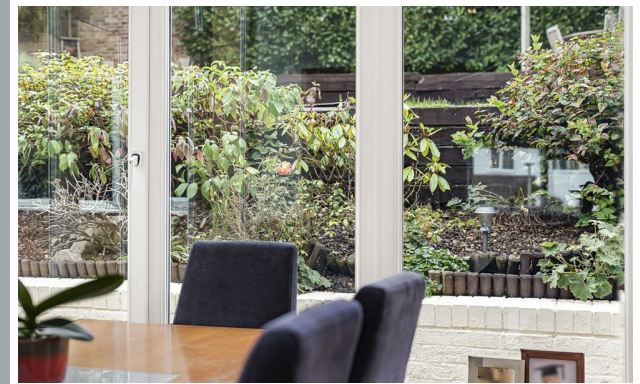
Rib Vale is located in the ever popular Bengeo area, a sought after and very peaceful area on the edge of the picturesque market town of Hertford. It is a 20-25 minutes walk from Hertford North rail Station and around 10-15 minutes from Hertford East (via Hartham Common), both with their regular services to London. Also providing easy access to the A10 and M25 for road users.



70 Fore Street, Hertford, Hertfordshire, SG14 1BY



70 Fore Street, Hertford, Hertfordshire, SG14 1BY



70 Fore Street, Hertford, Hertfordshire, SG14 1BY





70 Fore Street, Hertford, Hertfordshire, SG14 1BY



70 Fore Street, Hertford, Hertfordshire, SG14 1BY



70 Fore Street, Hertford, Hertfordshire, SG14 1BY





70 Fore Street, Hertford, Hertfordshire, SG14 1BY

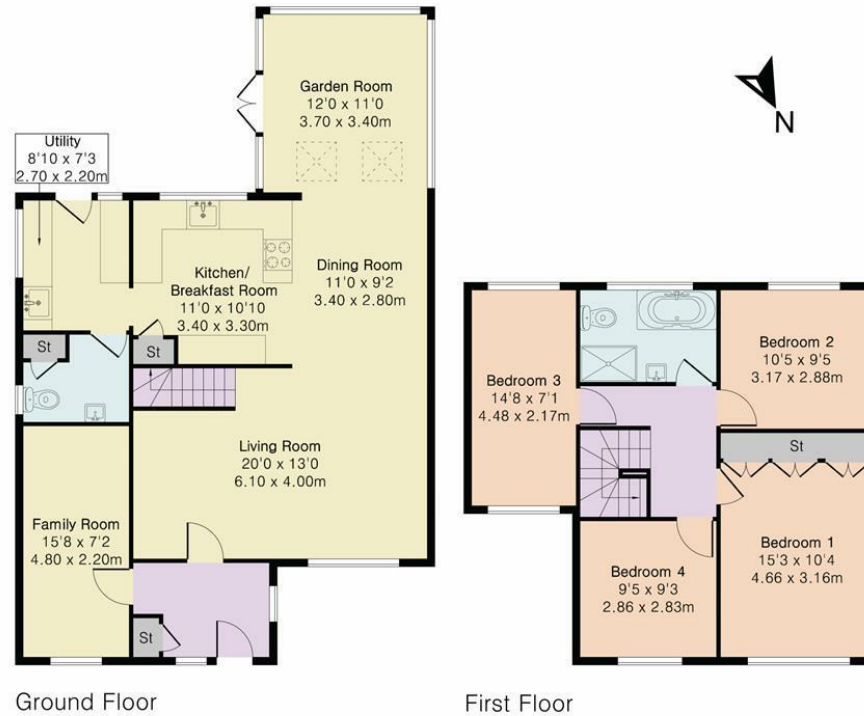


70 Fore Street, Hertford, Hertfordshire, SG14 1BY

Approximate Gross Internal Area 1532 sq ft - 142 sq m

Ground Floor Area 925 sq ft – 86 sq m

First Floor Area 607 sq ft – 56 sq m



Floor plan produced in accordance with RICS Property Measurement 2nd Edition. Although Pink Plan Ltd ensures the highest level of accuracy, measurements of doors, windows and rooms are approximate and no responsibility is taken for error, omission or misstatement. These plans are for representation purposes only and no guarantee is given on the total square footage of the property within this plan. The figure icon is for initial guidance only and should not be relied on as a basis of valuation.



These particulars, whilst believed to be accurate are set out as a general outline only for guidance and do not constitute any part of an offer or contract. Intending purchasers should not rely on them as statements of representation of fact, but must satisfy themselves by inspection or otherwise as to their accuracy. No person in this firm's employment has the authority to make or give any representation or warranty in respect of the property.

