



HOMES BY VICTORIA
ESTATE AGENCY

Plymouth Road, Redditch, B97 4NZ

Offers Over £585,000

5 2 2



[homesbyvictoria.co.uk](https://www.homesbyvictoria.co.uk)

victoria@homesbyvictoria | 07833 136521

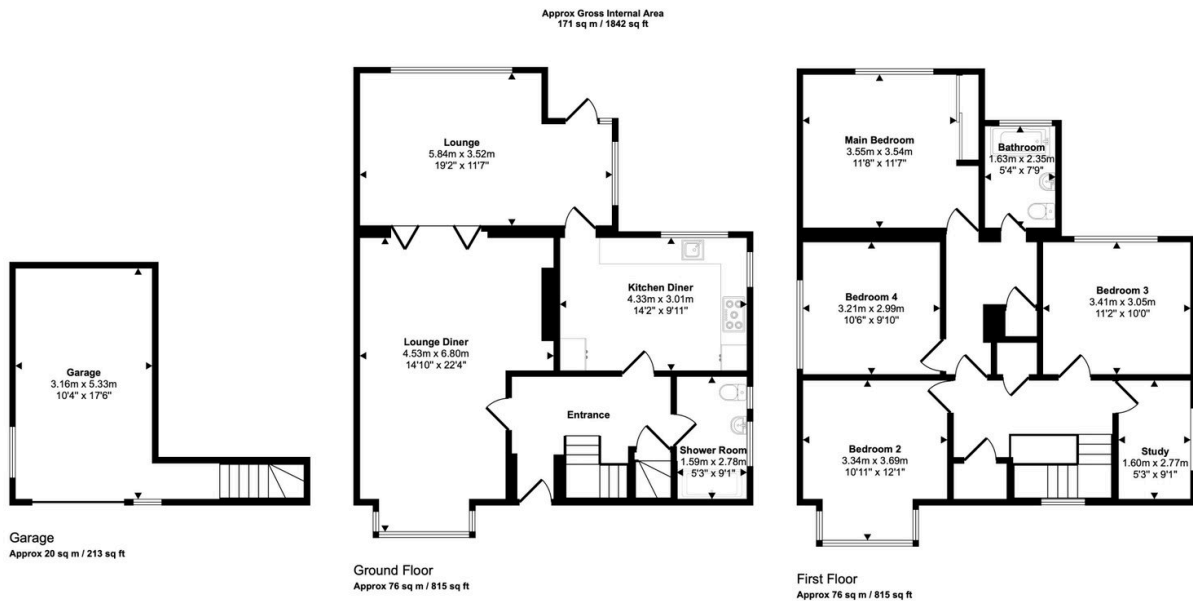
FOR M HOMES MIDLANDS LIMITED trading as Homes By Victoria Company Number: 13688840 VAT no: 470190115



HOMES BY VICTORIA
ESTATE AGENCY



- Prestigious Plymouth Road location, one of Redditch's most sought-after addresses
- Beautifully renovated and modernised throughout to an exceptional standard
- Spacious detached family home offering up to five bedrooms
- Stunning formal lounge with Venetian plaster feature wall and Crittall-style bifold doors
- Bright and versatile second reception room with garden access
- Contemporary kitchen diner with integrated appliances and garden views
- Stylish ground floor shower room with modern fittings
- Four generous double bedrooms plus a dedicated study/fifth bedroom
- Internal access to a substantial garage and ample driveway parking
- Private, beautifully landscaped tiered rear garden ideal for entertaining



This floorplan is only for illustrative purposes and is not to scale. Measurements of rooms, doors, windows, and any items are approximate and no responsibility is taken for any error, omission or mis-statement. Icons of items such as bathroom suites are representations only and may not look like the real items. Made with Made Snappy 360.

A Stunning Five-Bedroom Detached Family Home on One of Redditch's Most Prestigious Roads. Nestled along the highly sought-after Plymouth Road, this exceptional five-bedroom detached family home has been thoughtfully transformed by the current owners to create a luxurious, contemporary residence ready for its next chapter.