

abbot**Fox**
Bespoke.



Norwich, NR4
£575,000 - £600,000

“

abbotFox Bespoke is a private office within abbotFox specialising in the sale and letting of some of the region's most exclusive and prestigious properties.

Samuel Le Good | **Head of Bespoke**







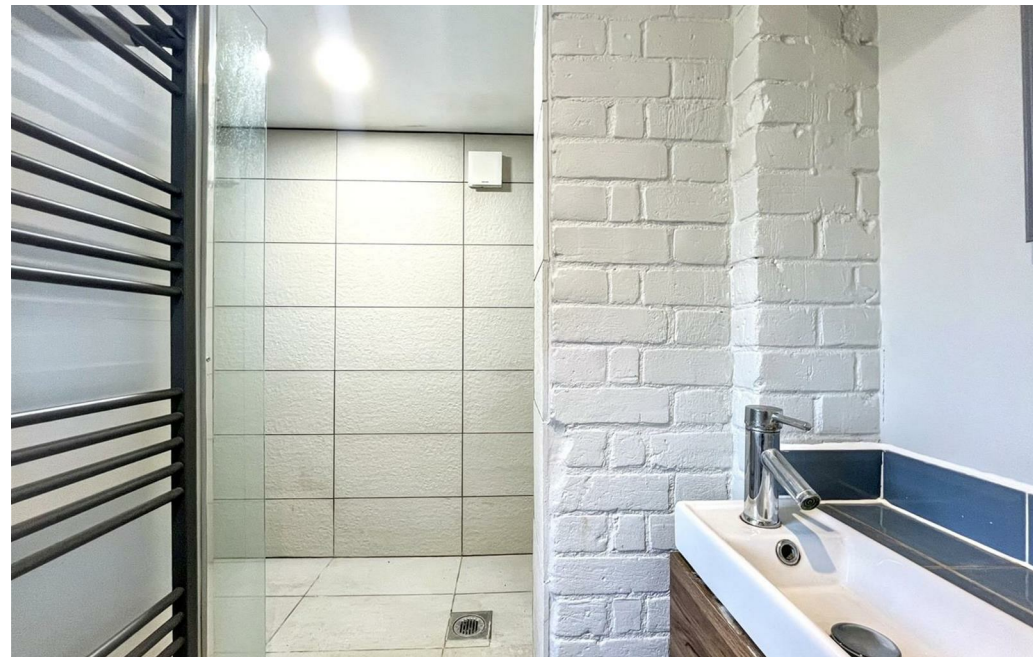
THE DETAIL_____

abbotFox Bespoke presents this striking detached residence, enviably located on Earlham Road. Thoughtfully extended and beautifully maintained, this home offers exceptional space and versatility, perfectly suited to modern family life and multi-generational living.

The accommodation is centred around a stunning open-plan kitchen diner, complemented by multiple reception rooms and practical utility space. Upstairs, a collection of well-proportioned bedrooms and contemporary bathrooms ensure comfort throughout, with the principal suite offering a private retreat.

Set within generous gardens, with ample parking, this home combines privacy with convenience. Perfectly placed for the city centre, UEA, the Norfolk & Norwich Hospital and excellent local schooling, this is a rare opportunity to secure a landmark family home in a highly sought-after location.

Guide price £550,000 - £575,000



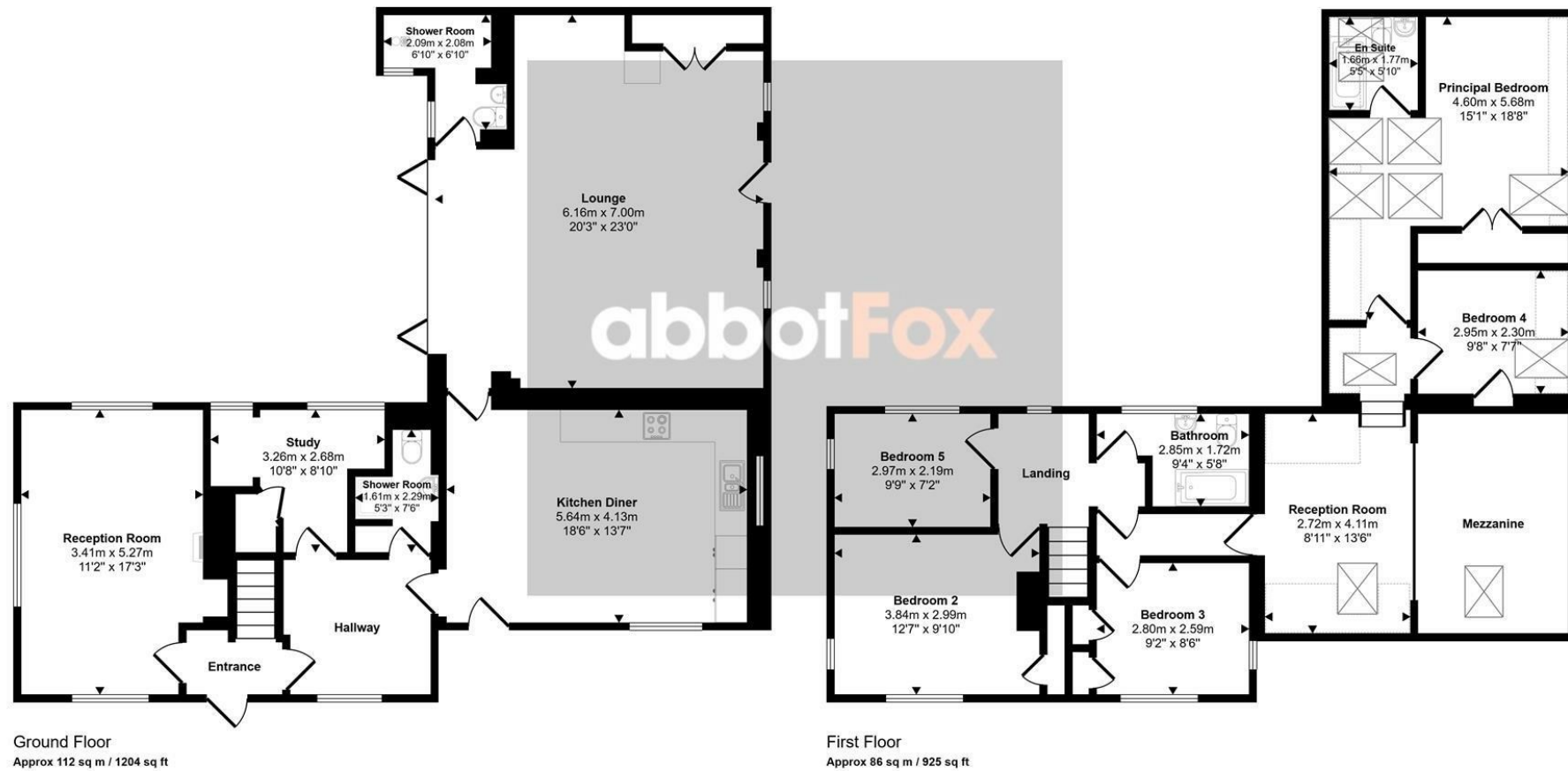




THE HIGHLIGHTS__

- Detached family home
- Flexible layout with annexe potential
- Sought after location, within easy reach of amenities
- Exceptional living accommodation
- No onward chain
- Guide price £550,000 - £575,000

Approx Gross Internal Area
198 sq m / 2129 sq ft



This floorplan is only for illustrative purposes and is not to scale. Measurements of rooms, doors, windows, and any items are approximate and no responsibility is taken for any error, omission or mis-statement. Icons of items such as bathroom suites are representations only and may not look like the real items. Made with Made Snappy 360.

Let's talk

01603 660000

sales@abbotfox.co.uk

@abbotfox @abbotfoxbespoke

EPC RATING -

Disclaimer – In accordance with the Property Misdescriptions Act, the company abbotFox gives notice that all descriptions, references to condition, necessary permissions for use and other details are given in good faith and believed to be correct, but any purchaser should not rely on them as statements of fact, and must satisfy themselves by inspection or other means, as to their accuracy.